

# Citadel Series LED

for High Dust & Debris Environments

## Dirty environment approved

Free from harmful dust and dirt buildups that prevent fixtures from staying cool

## Easy installation

Plug and play waterproof cord connectors

Fast lead times

## USA ingenuity

Dual purpose cooling and hanging fin

## Scalable design

100 – 900 Watts

## Better designed projects

Optics 60° – 90° – 120° – Aisles

**REVOLUTIONARY,  
PATENT-PENDING DESIGN**  
sets new performance standards for  
extreme industrial environments.

Want the very best and brightest in military-grade LED lighting? Turn to the Citadel. This series looks like no other LED because it's designed like no other LED. As a result, it stands up to the most demanding high-heat, high-dust & debris environments like no other LED.



## American-Made Tough & Reliable

We understand that failure is not an option. Our fixtures are uniquely designed and built Military-Grade tough, so they stand up to almost anything without complaint.



## Keep Your cool with Remote Drivers

Tactik features remote drivers to prevent unwanted heat build-up. Helps extend fixture life and offers added flexibility to adjust to plant floor plans – without costly re-gridding.



## 2 Week Lead Time

Our innovative modular design and advanced manufacturing capabilities allow us to ship all orders, even customizations, in 2 weeks.





# Citadel Series LED

## One Brilliant Idea After Another

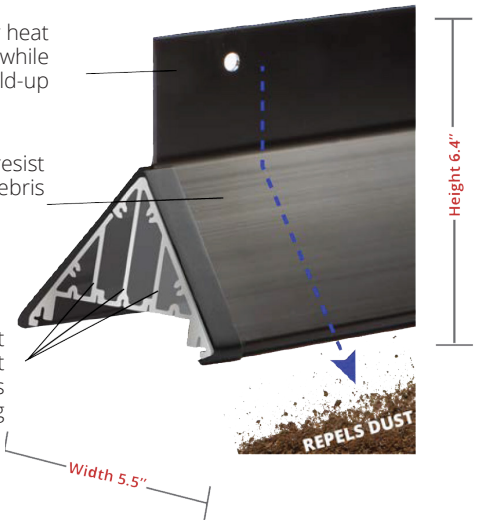
### PREVENT PREMATURE FIXTURE FAILURE

As dust & debris accumulate, they act as insulators. This causes internal temperatures to soar and frequently leads to premature fixture failure. The Citadel Series' innovative design addresses this issue three different ways.

1. Patent-Pending Vertical exterior heat transfer cooling fin dissipates heat while preventing dust and debris build-up

2. Steeply sloped sidewalls resist build-up of dust and debris

3. Patent-pending Internal heat transfer cooling fins prevent buildup of dust and debris that can hinder cooling

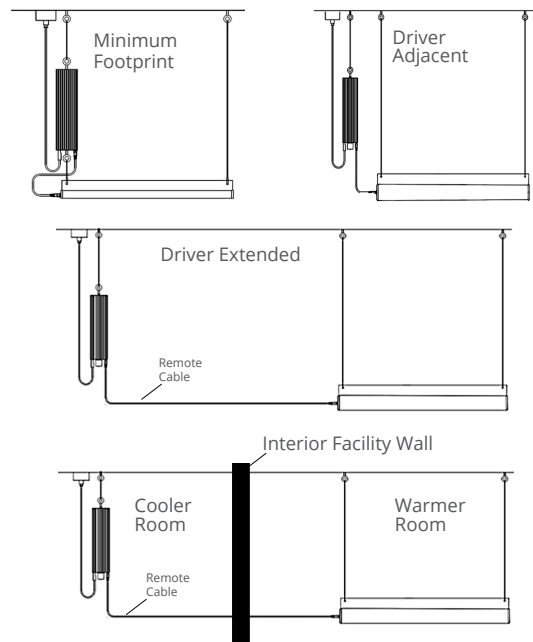


### REMOTE DRIVER SYSTEMS

Tactik Lighting uses drivers that are capable of being in ambient temperatures up to 167°F. With the light engine itself being capable of being in ambient temperatures of 245°F.

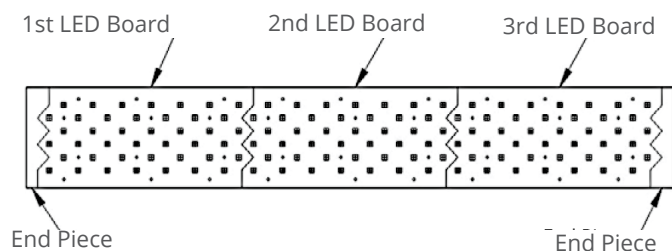
If an environment is above 167°F, the driver must be relocated to an area where the temperature falls below that threshold. This can range anywhere from 10' to 1000' with no voltage drop-off.

The driver box can be hung at ground level, ceiling level, mounted to strut or to a wall. The universal plug and play allow for complete accessibility.



### LED BOARD CONFIGURATIONS

The patent-pending shark tooth design allows LED boards to fit 11 models, ranging from 100 to 900 watts, ensuring uniform light distribution without dead spots. Each 8" board can handle up to 75 watts, and higher wattage fixtures result in longer fixtures.



# Citadel Series LED

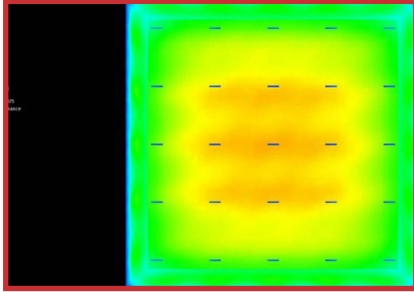
One Brilliant Idea After Another

## Optics Information

---

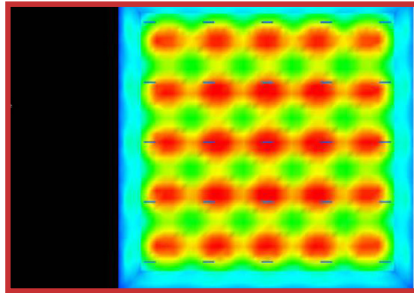
### NO OPTICS

- > Great for general illumination. No Optics are also great if you want to maximize horizontal light & to achieve uniform lighting overall. Ideal for 30 feet and below.



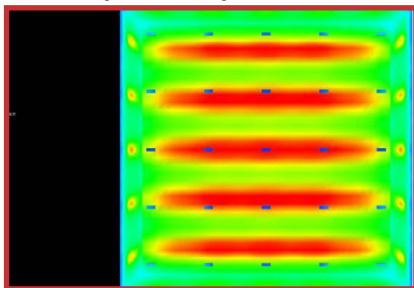
### 60 DEGREE OPTICS

- > Great for higher ceilings. Best used for fixtures mounted 30+ feet up. (This image captures a 25 foot mounting height).



### AISLE OPTICS

- > Great for racking. With Aisle Optics, light is not wasted in adjoining aisles. This means you can reduce the number of fixtures in your facility, or can substantially reduce wattage when switching from HID or Fluorescents to LED.



# Citadel Series LED



fig 1.1



fig 1.2



fig 1.3

\*All Motion sensor purchases come as a set, including a motion sensor and an L7 Wattstopper lens. Coverage includes up to 40' and the maximum temperature rating for the motion sensors is 165°F

PROJECT NAME	
CATALOG #	
NOTES	

## FEATURES

- > Driver temperature up to 167°F (75°C)
- > UL Listed Drivers with less than 1% failure rate
- > Patent-pending remote driver minimizes fixture operating temperature without re-gridding required
- > Patent-pending design extends fixture life by helping prevent build-up of insulating dust and debris and eliminating illumination dead spots
- > Includes 10 Year Module Warranty - Full light engine or plug & play driver module replacement, rather than parts
- > Fail off 15KA transient voltage surge suppressor (TVSS) protects fixture against failure due to power supply surges
- > Optional motion sensor. Choose from standard by Wattstopper with L7 lens (fig 1.1 & fig 1.2\*), or Internet of Things (IOT) by Enlighted Sensors (fig 1.3).
- > Dimmable 0-10V
- > UL 1598 listed
- > IP65 rated

## SPECIFICATIONS

Power Factor.....>0.9  
 Available Wattages..... 100, 150, 200, 250, 300, 400, 500, 600, 700, 800, 900  
 Kelvin Temperatures .....4000K, 5000K  
 Input Voltage ..... 120/277V & 347/480V  
 Performance..... Up to 160 lm/W  
 Distribution..... 120°, 60° & Aisle  
 Mount Type..... Suspension  
 Color Rendering Index (4000K) .....>70  
 Color Rendering Index (5000K) .....>90

## LUMINOUS OUTPUT, DIMENSIONS & WEIGHT

WATTAGE	OUTPUT	STANDARD TEMP		HIGH TEMP		EXTREME TEMP	
		LENGTH	WEIGHT	LENGTH	WEIGHT	LENGTH	WEIGHT
100 Watts	13,220 lumens	18 in	18.039 lbs	18 in	18.039 lbs	26 in	20.941 lbs
150 Watts	21,600 lumens	18 in	18.171 lbs	26 in	20.941 lbs	34 in	24.209 lbs
200 Watts	28,800 lumens	26 in	21.439 lbs	34 in	24.209 lbs	42 in	26.979 lbs
250 Watts	36,000 lumens	34 in	24.209 lbs	42 in	26.979 lbs	60 in	35.676 lbs
300 Watts	43,200 lumens	34 in	24.629 lbs	50 in	30.169 lbs	68 in	41.844 lbs
400 Watts	57,600 lumens	50 in	34.704 lbs	68 in	41.844 lbs	84 in	42.584 lbs
500 Watts	72,000 lumens	50 in	34.704 lbs	84 in	42.584 lbs	110 in	62.189 lbs
600 Watts	86,400 lumens	68 in	42.684 lbs	102 in	48.964 lbs	126 in	63.135 lbs
700 Watts	100,800 lumens	84 in	47.539 lbs	118 in	58.619 lbs	146 in	70.959 lbs
800 Watts	115,200 lumens	92 in	51.569 lbs	136 in	65.419 lbs	146 in	70.959 lbs
900 Watts	129,600 lumens	102 in	54.339 lbs	146 in	70.959 lbs	146 in	70.959 lbs

## OPERATIONAL TEMPERATURE

STANDARD TEMP	HIGH TEMP	EXTREME TEMP
-40°F to 130°F (or -40°C to 55°C)	-40°F to 195°F (or -40°C to 90°C)	-40°F to 245°F (or -40°C to 118°C)

## CITADEL ORDERING INFORMATION

SAMPLE ORDER NUMBER: CIT-1-100-40-1-2-1-1-1-X-X-X-1-1

SERIES	WATTAGE	KELVIN	OPTICS	LENS	FINISH	DRIVER VOLTAGE	REMOTE CABLE	MOTION SENSOR	BATTERY BACKUP	DLC	POWER CORD TYPE	CORD LENGTH
CIT-1 Std Temp	100	40- (4000K)	1- No Optics	2- Flat Poly Clear <sup>2</sup>	1- Black	1- 120/277V	1- 6'	X- No	X- No	X- N/A	1- whip 120-277V	1- 6'
CIT-2 High Temp	150 <sup>1</sup>	50- (5000K)	2- 60°	6- Tempered glass clear		2- 24V DC	2- 10'	1- Standard <sup>3</sup>	1- Yes	1- Standard	2- whip 347-480V	2- 12'
CIT-3 Extreme	200		4- Aisle			4- 347/480V	3- 25'	2- IOT <sup>3</sup>		2- Premium	3- 125V 15amp Straight	
	250 <sup>1</sup>						4- 50'				4- 125V 20amp Twistlock	
	300						5- 100'				5- 250V 20amp Twistlock	
	400 <sup>1</sup>						6- 200'				6- 277V 15amp Twistlock	
	500 <sup>1</sup>						7- 500'				7- 277V 20amp Twistlock	
	600 <sup>1</sup>						8- 1,000'				8- 480V 20amp Twistlock	
	700 <sup>1</sup>						9- Custom				9- 600V 20amp Twistlock	
	800 <sup>1</sup>										M- M12 3ft	
	900 <sup>1</sup>											

<sup>1</sup> Under review - DLC approval pending

<sup>2</sup> Due to melting concerns, Flat Poly Clear Lenses are only available with CIT-1 Standard Temperature Fixtures

<sup>3</sup> Motion Sensor information: Standard (1) features sensors by Wattstopper with L7 lens. Internet of Things or IOT, (2) features sensors by Enlighted Sensors

# Citadel Series LED

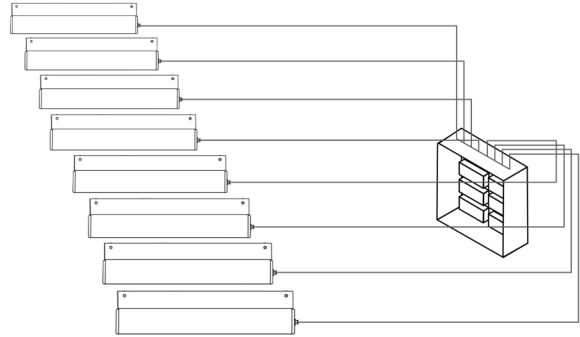
## One Brilliant Idea After Another

### DAISY CHAIN & CONTROL PANEL OPTIONS

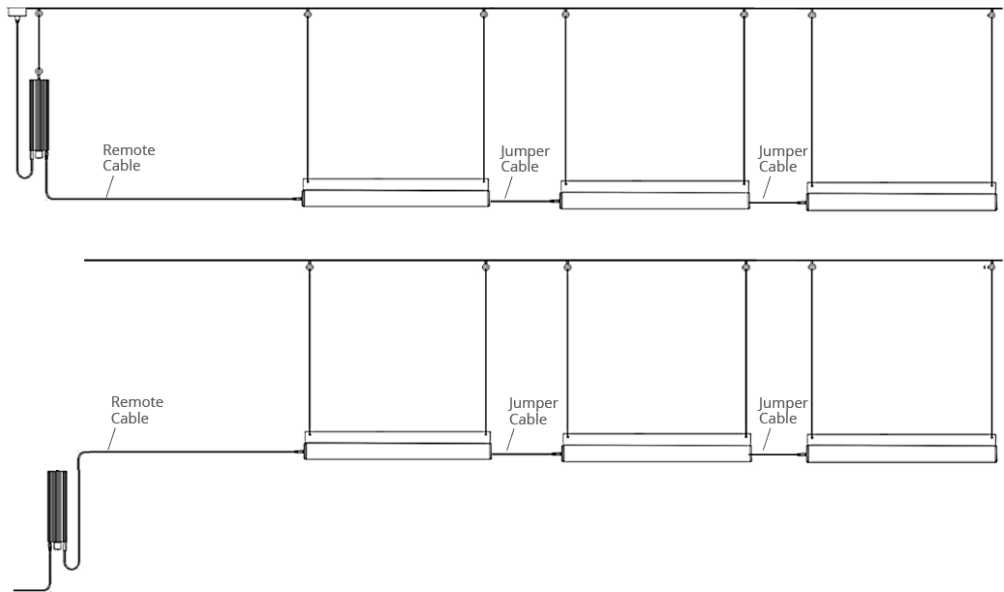
Our custom daisy chain configurations and custom control panel options allow you to power multiple fixtures with one driver, saving you money and space. And we can custom-mount your drivers at a height that best suits your environment.

Reach out to a manufacturing representative today for a custom quote for your facility.

Control Panel for Multiple Lights



Daisy Chain for Multiple Lights



### CITADEL DAISY CHAIN ORDERING INFORMATION

ORDER NUMBER: CIT-1-100-40-1-2-1-1-1-X-X-X-1-1-2-1

SERIES	WATTAGE	KELVIN	OPTICS	LENS	FINISH	DRIVER VOLTAGE	REMOTE CABLE	MOTION SENSOR	BATTERY BACKUP	DLC	POWER CORD TYPE	CORD LENGTH	DAISY CHAIN	FIXTURE CABLE
CIT-1Std	50	40- (4000K)	1- No Optics	2- Flat Poly Clear <sup>2</sup>	1- Black	1- 120/277V	1- 6'	X- No	X- No	X- N/A	1- whip 120-277V	1- 6'	2	1- 6'
CIT-2 High	100	50- (5000K)	2- 60°	6- Tempered glass clear		2- 24V DC	2- 10'	1- Standard <sup>3</sup>	1- Yes	1- Standard	2- whip 347-480V	2- 12'	3	2- 10'
CIT-3 Extreme	150		4- Aisle			4- 347/480V	3- 25'	2- IOT <sup>3</sup>		2- Premium	3- 125V 15amp Straight		4	3- 25'
							4- 50'				4- 125V 20amp Twistlock		5	4- 50'
							5- 100'				5- 250V 20amp Twistlock			5- 100'
							6- 200'				6- 277V 15amp Twistlock			6- 200'
							7- 500'				7- 277V 20amp Twistlock			7- 500'
							8- 1,000'				8- 480V 20amp Twistlock			8- 1,000'
							9- Custom				9- 600V 20amp Twistlock			9- Custom
											M- M12 3ft			

Note:  
100 Watt Max Daisy Chain = 3.  
150 Watt Max Daisy Chain = 2.





# American Made & Measurably Better

## What's better than higher heat ratings in your LED lights? Higher heat ratings in the 1st AMERICAN MADE LED lights!

You heard right. Industrial/commercial LED lights proudly made in America. So, you see a 46% increase in high temperature ratings. You know what you won't see? The cost of foreign trade tariffs jacking up the price of the products you want.



### Tactik Labs is your added assurance of reliability.

Our LED lighting is designed to a higher standard. So is our validation process. At our in-house lab testing facility, our products undergo rigorous testing to provide you every assurance possible that all Tactik LED lighting will perform and last as promised. While others may talk about performance and reliability in harsh environments, Tactik Labs documents it.

### Backed with confidence.

We protect distributors and customers with a 10-year warranty standard for added peace of mind. Plus, service after the sale includes a proactive warranty process – replacement is shipped immediately if a problem is identified and defective product is returned in its original box.



3115 N 21<sup>st</sup> Street, Suite 2, Sheboygan, WI 53083  
920-287-3840 • sales@tactik.com

[tactiklighting.com](http://tactiklighting.com)

