



Citadel Series LED

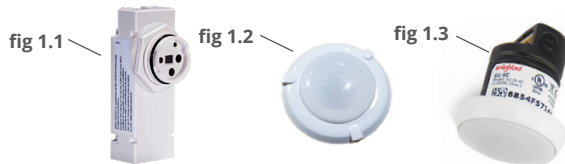
High Temperature & Standard Temperature Specifications

SPECIFICATIONS

Power Factor.....	>0.9
Input Voltage	120/277V & 347/480V
Performance.....	Up to 160 lm/W
Operational Temperature.....	-40° F to 195°F (-40°C to 90°C)
Distribution.....	120°, 60° & Aisle
Mount Type.....	Suspension
Kelvin Temperature	4000K, 5000K
Available Wattages....	100W, 150W, 200W, 250W, 300W, 400W 500W, 600W, 700W, 800W, 900W
Color Rendering Index (4000K)	>70
Color Rendering Index (5000K)	>90

FEATURES

- > Available in high temperature (up to 195°F) or standard temperature (up to 130°F)
- > Inventronics Drivers with less than 1% failure rate
- > Patent-pending design extends fixture life by helping prevent build-up of insulating dust and debris and eliminates illumination dead spots
- > Patent-pending remote driver minimizes fixture operating temperature without re-gridding required
- > Includes 10 Year Module Warranty
- > Dimmable 0-10V
- > In-series transient voltage surge suppressor (TVSS) protects fixture against failure due to power supply surges
- > Optional motion sensor. Choose from standard by Wattstopper with L7 lens (fig 1.1 & 1.2*), or Internet of Things (IOT) by Enlighted Sensors (fig 1.3).
- > UL 1598 listed
- > IP65 rated



LUMINOUS OUTPUT & DIMENSIONS

WATTAGE	LUMEN OUTPUT	LENGTH
100 Watts	13,220 lumens	18 inches
150 Watts	21,600 lumens	26 inches
200 Watts	32,900 lumens	34 inches
250 Watts	36,000 lumens	42 inches
300 Watts	42,820 lumens	50 inches
400 Watts	57,600 lumens	66 inches
500 Watts	72,000 lumens	82 inches
600 Watts	86,400 lumens	98 inches
700 Watts	100,800 lumens	114 inches
800 Watts	115,200 lumens	130 inches
900 Watts	129,600 lumens	146 inches

POWER CORD (REQUIRED)

DESCRIPTION	PRODUCT NUMBER
125V, 15 amp, Straight Blade, 6 ft	PC-PP-125-15-SB-6
125V, 15 amp, Straight Blade, 12 ft	PC-PP-125-15-SB-12
125V, 15 amp, Twist Lock, 6 ft	PC-PP-125-15-TL-6
125V, 15 amp, Twist Lock, 12 ft	PC-PP-125-15-TL-12
125V, 20 amp, Twist Lock, 6 ft	PC-PP-125-20-TL-6
125V, 20 amp, Twist Lock, 12 ft	PC-PP-125-20-TL-12
250V, 20 amp, Twist Lock, 6 ft	PC-PP-250-20-TL-6
250V, 20 amp, Twist Lock, 12 ft	PC-PP-250-20-TL-12
277V, 15 amp, Twist Lock, 6 ft	PC-PP-277-15-TL-6
277V, 15 amp, Twist Lock, 12 ft	PC-PP-277-15-TL-12
277V, 20 amp, Twist Lock, 6 ft	PC-PP-277-20-TL-6
277V, 20 amp, Twist Lock, 12 ft	PC-PP-277-20-TL-12
480V, 20 amp, Twist Lock, 6 ft	PC-PP-480-20-TL-6
480V, 20 amp, Twist Lock, 12 ft	PC-PP-480-20-TL-12
600V, 20 amp, Twist Lock, 6 ft	PC-PP-600-20-TL-6
600V, 20 amp, Twist Lock, 12 ft	PC-PP-600-20-TL-12
600V, Whip, 12ft	PC-PP-600-W-12

*All Motion sensor purchases come as a set, including a motion sensor and an L7 Wattstopper lens.

CITADEL ORDERING INFORMATION

SAMPLE ORDER NUMBER: CIT-1-100-40-1-2-1-1-1-X-X-1

SERIES	WATTAGE	KELVIN	OPTICS	LENS	FINISH	DRIVER VOLTAGE	REMOTE CABLE	MOTION SENSOR	BATTERY BACKUP	DLC
CIT-1 High Temp	100- (100W)	40- (4000K)	1- No Optics	2- Flat Poly Clear	1- Black	1- 120/277V	1- 3'	X- No	X- No	1- Standard
CIT-2 Std Temp	150- (150W)	50- (5000K)	2- 60°	6- Flat tempered glass clear		4- 347/480V	2- 10'	1- Standard*	1- Yes	2- Premium
	200- (200W)		4- Aisle				3- 25'	2- Internet of Things*		
	250- (250W)						4- 50'			
	300- (300W)						5- 100'			
	400- (400W)						6- 150'			
	500- (500W)						7- 200'			
	600- (600W)						8- 250'			
	700- (700W)									
	800- (800W)									
	900- (900W)									

* Motion Sensor information: Standard (1) features sensors by Wattstopper with L7 lens. Internet of Things or IOT, (2) features sensors by Enlighted Sensors

** Fixture includes a 6 foot Whip Plug N Play Cord. For additional cord options, see Power Cord Table above for ordering information.

3115 N 21st Street, Suite 2, Sheboygan, WI 53083
920-287-3840

tactiklighting.com



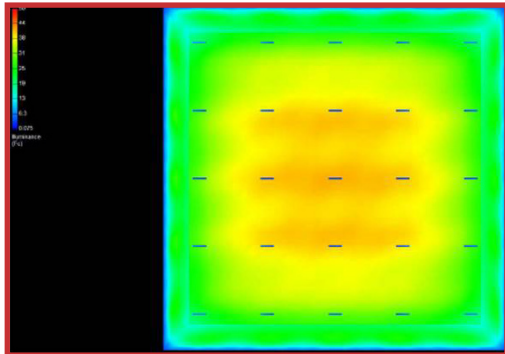
Citadel Series LED

One Brilliant Idea After Another

Optics Information

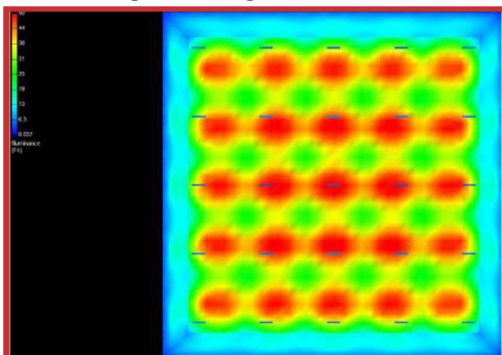
NO OPTICS

- > Great for general illumination. No Optics are also great if you want to maximize horizontal light & to achieve uniform lighting overall. Ideal for 30 feet and below.



60 DEGREE OPTICS

- > Great for higher ceilings. Best used for fixtures mounted 30+ feet up. (This image captures a 25 foot mounting height).



aisle OPTICS

- > Great for racking. With Aisle Optics, light is not wasted in adjoining aisles. This means you can reduce the number of fixtures in your facility, or can substantially reduce wattage when switching from HID or Flourescents to LED.

