



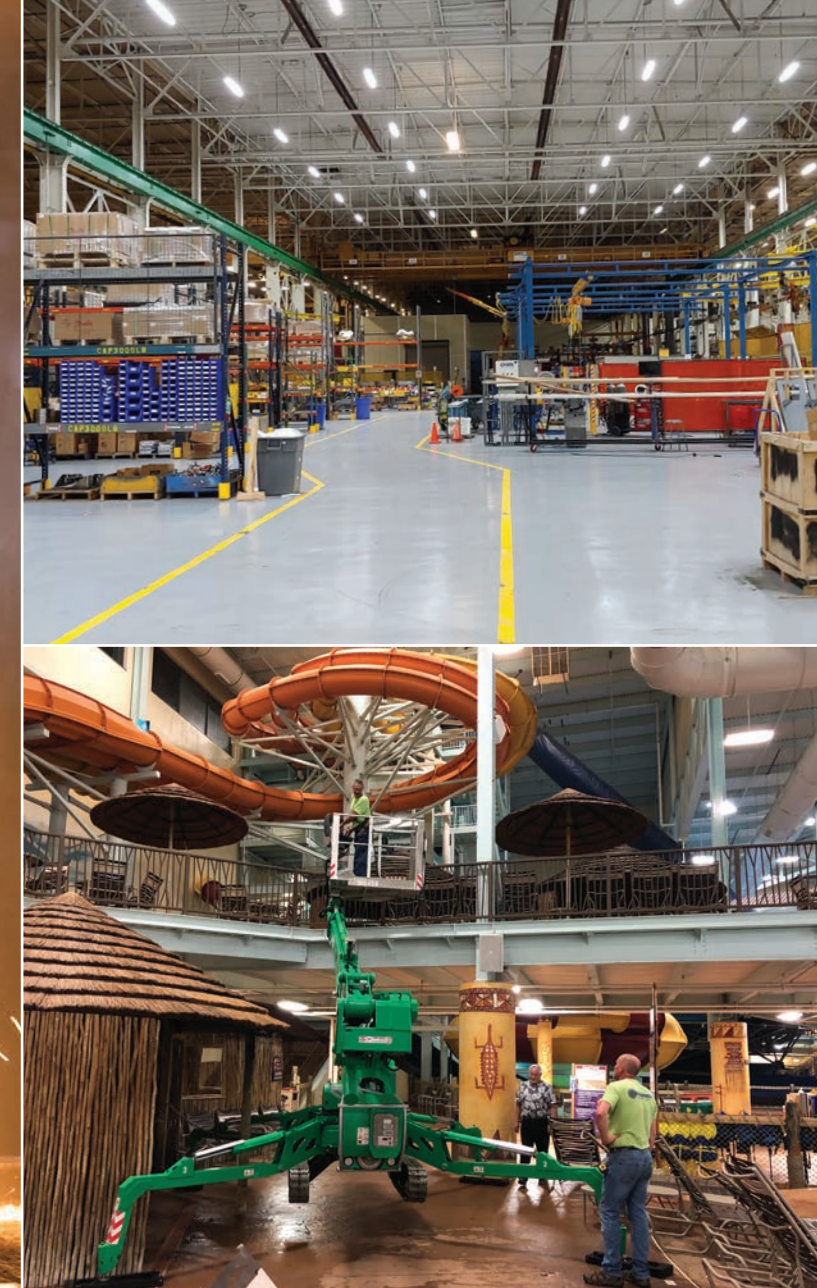
**COMMITTED TO OFFERING AMERICAN INDUSTRY  
A BRIGHTER FUTURE**

**LIGHTING CATALOG**





# Our Reliability Has Been Proven Under the Harshest Conditions Imaginable



**LEDs MADE FOR THE REAL WORLD — YOUR WORLD.**

In theory, LED lighting is supposed to offer significantly improved energy efficiency compared to more traditional commercial and industrial lighting. In reality, environmental factors – including temperature, dust, grit, vibration, moisture and corrosive vapors – can degrade LED performance and reliability rapidly. As a result, American businesses have become increasingly frustrated with all the cheaply designed-and-made products from overseas. You demanded better. We delivered.



**WELCOME TO MILITARY-GRADE LED LIGHTING**

Designed and built to a higher standard to deliver the performance, reliability and energy savings you expect from LEDs.

- > Built-In Protection includes seals and gaskets to keep contaminants out
- > Added Reliability and consistency of performance thanks to transient voltage surge suppression
- > Added Durability of best-in-class branded drivers with soldered wires
- > Extended Life due to low LED and driver running temperatures results in the lowest life cycle costs of any industrial-grade LED lighting

**KEEP YOUR COOL WITH REMOTE DRIVERS.**

Most Tactik lights utilize remote drivers to prevent unwanted heat build-up inside the fixture, which can degrade performance and is a leading cause of premature fixture failure.

 Remote drivers also offer added flexibility, allowing you to easily and economically adjust your lighting to evolving plant floor needs – without costly and time-consuming re-gridding.

**MANAGE MORE EFFECTIVELY WITH SMART TECHNOLOGY.**

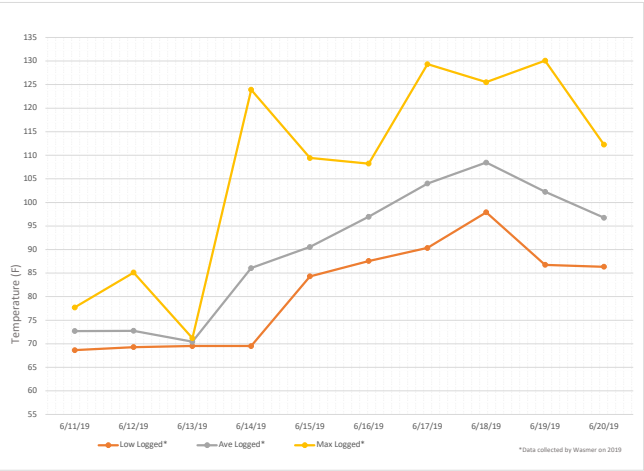
 Turn your lighting into smart building solutions with the only U.S. industrial LED lighting manufacturer to offer the world’s most advanced wireless lighting control capabilities – Enlighted; A Siemens Company.

- > Improve Workflow using space utilization, motion and occupancy data
- > Optimize Energy Savings with daylight harvesting and task tuning data
- > Increase Productivity of employees and assets with RFID location technology





# Military-Grade Is a Matter of Integrity; So Is Our Word



EXTREME TEMPERATURE TESTING



CORROSIVE TESTING AND MORE

## TACTIK LABS IS YOUR ADDED ASSURANCE OF RELIABILITY

Our LED lighting is designed to a higher standard. So is our validation process.

At our in-house lab testing facility, our products undergo rigorous testing to provide you every assurance possible that all Tactik LED lighting will perform and last as promised.

While others may talk about performance and reliability in harsh environments, Tactik Labs documents it. Temperature extremes – and even heat build-up. Check. The ability to effectively resist the effects of dust, grit, moisture and corrosive gases. Check.

Because we want to help you make the best-informed decisions possible regarding your LED lighting choices, we also test leading competitors’ units. That way, you can see how our Military-Grade LED Lighting stacks up against the competition in side-by-side comparisons. Through years of testing, including 3rd party UL and DLC testing, we’ve learned a lot. And we look forward to sharing what we’ve learned with you. After all, the integrity of your LED lighting and the company that manufactures it matters. You have our word on it.

# Foot Candle Ordering Information

## Footcandle Averages 20'x20' grid 120 degree

Lumens									
50000	124.3	113.4	106.58	100.85	95.77	91.03	86.2	81.7	77.37
45000	111.84	102.04	95.9	90.74	86.17	81.91	77.56	73.52	69.62
40000	99.45	90.73	84.27	80.69	76.62	72.83	68.97	65.37	61.91
35000	87	79.37	74.59	70.59	67.03	63.71	60.33	57.18	54.16
30000	74.6	68.06	63.97	60.53	57.48	54.64	51.74	49.04	46.44
25000	62.15	56.7	53.29	50.42	47.89	45.51	43.1	40.85	38.69
20000	49.7	45.34	42.61	40.32	38.29	36.4	34.46	32.66	30.94
15000	37.3	34.03	31.99	30.26	28.74	27.32	25.87	24.52	23.22
10000	24.85	22.67	21.3	20.16	19.14	18.2	17.23	16.33	15.47
5000	12.5	11.36	10.68	10.1	9.61	9.12	8.63	8.18	7.75
Height	10'	15'	20'	25'	30'	35'	40'	45'	50'

## Footcandle Averages 25'x25' grid 120 degree

Lumens									
50000	84.43	75.22	69.59	65.26	61.55	58.31	55.32	52.56	49.67
45000	75.97	67.68	62.62	58.73	55.39	52.47	49.78	47.3	44.7
40000	67.55	60.18	55.68	52.22	49.25	46.65	44.26	42.05	39.74
35000	59.09	52.64	48.71	45.68	43.08	40.81	38.72	36.79	34.76
30000	50.68	45.14	41.76	39.17	36.94	35	33.2	31.55	29.81
25000	42.21	37.61	34.79	32.62	30.77	29.15	27.68	26.28	24.83
20000	33.76	30.07	27.82	26.09	24.61	23.32	22.12	21.01	19.86
15000	25.33	22.57	20.88	19.59	18.47	17.5	16.6	15.77	14.9
10000	16.88	15.04	13.91	13.05	12.3	11.66	11.06	10.51	9.93
5000	8.46	7.53	6.97	6.54	6.17	5.84	5.54	5.27	4.98
Height	10'	15'	20'	25'	30'	35'	40'	45'	50'

## Footcandle Averages 25'x25' grid 60 degree

Lumens									
50000	89.46	83.92	76.64	72.38	69.36	66.89	64.67	62.44	60.27
45000	80.5	75.51	68.97	65.14	62.41	60.19	58.91	56.18	54.23
40000	71.57	67.13	61.31	57.91	55.49	53.51	51.74	49.95	48.21
35000	62.61	58.73	53.64	50.66	48.55	46.82	45.26	43.7	42.18
30000	53.68	50.35	45.99	43.43	41.62	40.14	38.8	37.46	36.16
25000	44.72	41.95	38.31	36.18	34.67	33.44	32.32	31.21	30.13
20000	35.78	33.57	30.66	28.95	27.74	26.76	25.87	24.97	24.11
15000	26.82	25.16	22.98	21.71	20.8	20.06	19.39	18.72	18.07
10000	17.9	16.87	15.33	14.47	13.87	13.38	12.93	12.49	12.05
5000	8.93	8.38	7.65	7.23	6.93	6.68	6.45	6.24	6.02
Height	10'	15'	20'	25'	30'	35'	40'	45'	50'

	0-10fc		31-40fc		61-70fc
	11-20fc		41-50fc		71+ fc
	21-30fc		51-60fc		

## HOW MANY FOOTCANDLES DO I NEED?

Light levels are a very sensitive conversation. Too much light and spotty or non-uniform light, can both be hard on the eyes. You will want to make sure you have enough uniformly distributed light to do the job efficiently and effectively. A simple rule of thumb for lighting requirements is 20 footcandles for a warehouse, 40 footcandles for production areas and 60 footcandles for inspection areas and retail applications. A best practice is the use of a footcandle meter on a walk around of your facility. This will help you determine which areas are well lit and allow comparison to recommended IES light levels. The IES provides guidelines for specific light levels by work area and industry. Call us at Tactik Lighting for assistance with IES recommendations and best practices for your application.

## HOW MANY LUMENS DO I NEED TO REACH THE FOOTCANDLE RECOMMENDATIONS THAT I DETERMINED FOR MY AREA?

Many variables go into the decision on light fixture lumens, including but not limited to, surface (floor-wall-ceiling) reflectance, airborne particulates, obstructions, fixture efficiency, lens material (acrylic-polycarbonate-glass), lens transparency and height and distance between fixtures. The best solution to determining precise needs is to have Tactik Lighting professionals prepare a custom lighting layout for you.

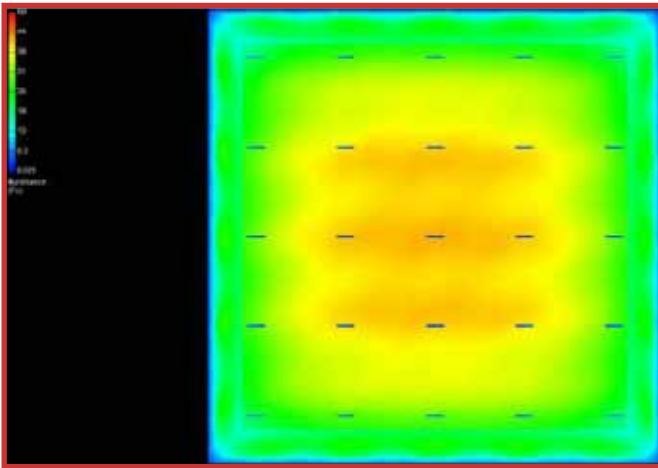
The tables on this page are provided to help quickly guide you to a fixture lumen package that will be perfect for your application.



# Optics Ordering Information

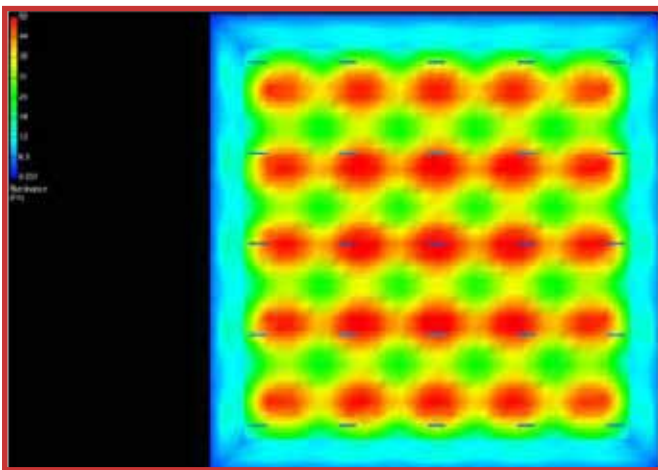
## NO OPTICS

- > Great for general illumination. No Optics are also great if you want to maximize horizontal light & to achieve uniform lighting overall. Ideal for 30 feet and below.



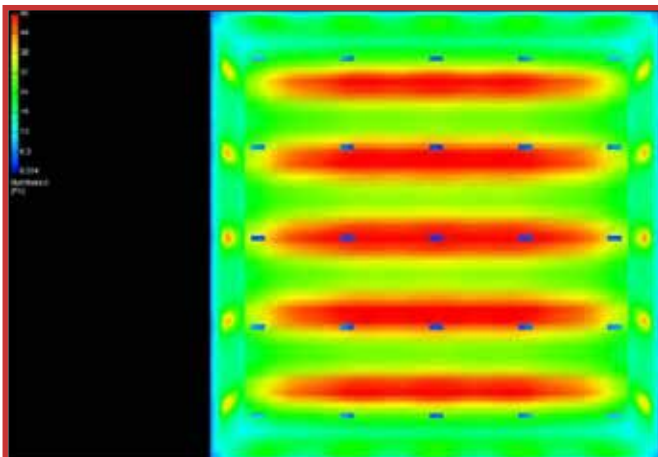
## 60 DEGREE OPTICS

- > Great for higher ceilings. Best used for fixtures mounted 30+ feet up. (This image captures a 25 foot mounting height).



## AISLE OPTICS

- > Great for racking. With Aisle Optics, light is not wasted in adjoining aisles. This means you can reduce the number of fixtures in your facility, or can substantially reduce wattage when switching from HID or Flourescents to LED.



# Motion Sensor Ordering Information

## Wattstopper Low Voltage High/Low/Off PIR Fixture Integrated Outdoor Photo/Motion Sensor (Standard Ordering Selection)



### DESCRIPTION

- > The standard Wattstopper Motion Sensor mounts in an outdoor lighting fixture and provides multi-level control based on motion and/or daylight contribution. It controls 0-10 VDC dim-to-off LED drivers or ballasts, or works with a power pack to control other loads. When used with an FSP-Lx Lens, the sensor is rated for wet and cold locations. All control parameters are adjustable via a wireless configuration tool capable of storing and transmitting sensor profiles.

### FEATURES

- > Controls 0-10V dim-to-off LED drivers or ballasts, or works with a power pack to control other loads
- > IP66 rated with choice of lenses for wet and outdoor locations, and mounting heights from 8' to 40'
- > Configuration tool stores six sensor profiles for quick setup and adjustment of multiple sensors
- > Polycarbonate construction; flame retardant, UV resistant, impact resistant, recyclable

## Enlighted Ruggedized IoT Motion Sensor (Premium Ordering Selection)

### DESCRIPTION

- > The Ruggedized Sensor, 8-pin, is a complete sensing and lighting control node powered from its attached light fixture. Sensor information combined with a configurable behavior profile make the sensor an integral component of an intelligent lighting control and sensing solution. With integrated wireless communications for data transmission and remote configuration along with autonomous fixture-level control, this sensor brings advanced lighting automation to a whole new level.



### FEATURES

- > Enlighted Sensor Interface (ESI): IoT Ready™ LED drivers and Enlighted Control Units communicate with the sensor via a serial interfaces providing access to energy consumption, and digital lighting control.
- > Localized Lighting Control: Light-level schedules, preferences, and behavior profiles for each fixture are wirelessly communicated during system setup and locally stored to ensure continuous operation.
- > Edge Sensing: Local processing capability supports advanced sensing and detection algorithms, providing optimization of existing features and enabling future applications.
- > Bluetooth Low Energy: An embedded BLE radio allows the sensor to receive, transmit beacons and support communication with lighting control devices and other sensors.
- > Occupancy and Thermal Sensing: A digital Passive Infrared (PIR) sensor combined with separate ambient and temperature sensing support precise motion identification while minimizing false detection events
- > Room and Zone Control: Pairs with room control switches for code-compliant manual-on or auto-off capability. Sensors can be grouped into zones that share occupancy sensing data and coordinate light control based on detected motion.
- > Two lens options are offered to cover standard (<18 ft.) and high-bay (up to 50 ft.) ceilings.

# Power Cord Ordering Information

## FEATURES

- > Choose a whip, straight blade or twist lock cord
- > Hardwire or Plug and Play connection to the fixture
- > Lengths- 6ft or 12 ft; contact us for a custom length

## POWER CORD OPTIONS

Series	Fixture Disconnect	Voltage	Plug Amp Rating	Plug Attachment Type	Length
PC - Power Cord	HW - Factory Installed Hardwire Cord PP - Plug N Play Connector	125 - 120V 250 - 250V 277 - 277V 480 - 480V 600 - 600V	15 - 15 Amps 20 - 20 Amps	SB - Straight Blade TL - Twist Lock	6 - 6 Feet 12 - 12 Feet
PC					

## POWER CORD WHIP OPTIONS

Series	Fixture Disconnect	Voltage	Whip	Length
PC - Power Cord	HW - Factory Installed Hardwire Cord PP - Plug N Play Connector	300 - 300V 600 - 600V	W - Whip	6 - 6 Feet 12 - 12 Feet
PC			W	

# Contact Information | How to Order

## TO ORDER:

By phone: **920-287-3840**

By e-mail: **sales@tactik.com**

## OPERATING HOURS:

8am-4pm central time, Monday through Friday.

## SHIPPING:

All orders are shipped from our facilities in Wisconsin and are subject to normal shipping fees. Shipping is free after accumulating purchases of greater than \$100,000 in any calendar year.

## PAYMENT TERMS:

Net 15 days.

## RETURNS:

Any product purchased from Tactik Lighting can be returned in the original packaging, unused and in salable condition for a 15% restocking fee. Returns need to be initiated with Tactik Lighting customer service within 45 days of product delivery. Customer is responsible for return shipping costs. Credit will be issued after product has been received and inspected by Tactik Lighting.

# Proud to Be the First to Offer American-Made Industrial LEDs



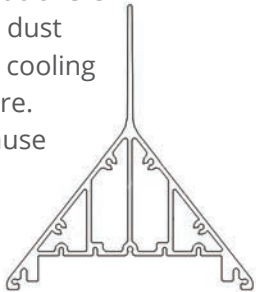
## INTRODUCING LED LIGHTING MADE IN AMERICA'S HEARTLAND

Our latest generation of Military-Grade LED lighting includes fixtures made right here in America. Now, you can get American made quality and craftsmanship you can see and feel. What you won't see is import tariffs tacked onto your fixture price tag.

As a veteran owned business, we understand the importance of offering our customers lasting American values.

## PATENT-PENDING DESIGNS REDEFINE HEAT DISSIPATION

Our NCO and Citadel Series feature an innovative, vertical exterior heat transfer cooling fin to dissipate heat while preventing dust and debris build-up. In addition, internal heat transfer cooling fins are protected against dust and debris build-up for improved cooling efficiency over the life of the fixture. These designs look different because they are different.



## HIGHER HEAT RATINGS MEAN LONGER LIFE

**195° F**

Our high-heat rated units now feature up to a 30% increase in heat threshold compared to leading competitors.

What's more, unlike competitors that experience up to a 45% fall-off in lumen output as they reach their high-heat rating, our fixtures have no fall-off in lumen output as they approach the limits of their heat rating.

## 5-7 DAY LEAD TIMES

Leading-edge, modular design and advanced manufacturing capabilities allow us to ship orders, even custom orders, in less time.

And all our products are backed by industry-leading warranties for added peace of mind.



Put it all together and you start to see the real value of lighting made in America specifically for American business.





# HIGH TEMPERATURE

Interior Lighting  
pg 12-15

# Citadel Series LED - High Temperature

**195° F**

**90 CRI**



## FEATURES

- > Up to 195°F (90°C) at 60% light output, or up to 175°F (80°C) at 100% light output
- > Inventronics Drivers with less than 1% failure rate
- > Patent-pending design extends fixture life by helping prevent build-up of insulating dust and debris
- > Patent-pending remote driver minimizes fixture operating temperature without re-gridding required
- > Patent-pending LED board design eliminates illumination dead spots
- > Dimmable 0-10V
- > In-series transient voltage surge suppressor (TVSS) protects fixture against failure due to power supply surges
- > Optional motion sensor. Choose from standard by Wattstopper with L7 lens (fig 1.1 & 1.2\*), or Internet of Things (IoT) by Enlighted Sensors (fig 1.3).
- > UL 1598 listed
- > IP65 rated

## SPECIFICATIONS

Power Factor.....>0.9  
 Input Voltage ..... 120/277V & 347/480V  
 Performance.....Up to 160 lm/W  
 Operational Temperature.....-40°F to 195°F (-40°C to 90°C)  
 Distribution..... 120°, 60° & Aisle  
 Mount Type.....Suspension  
 Kelvin Temperature ..... 4000K, 5000K  
 Available Wattages..... 100W, 150W, 200W, 250W, 300W, 400W, 500W, 600W, 700W, 800W, 900W  
 Color Rendering Index (4000K) .....>70  
 Color Rendering Index (5000K) .....>90

## LUMINOUS OUTPUT & DIMENSIONS

Wattage	Output	Length
100 Watts	14,400 lumens	18 inches
150 Watts	21,600 lumens	26 inches
200 Watts	28,800 lumens	34 inches
250 Watts	36,000 lumens	42 inches
300 Watts	43,200 lumens	50 inches
400 Watts	57,600 lumens	66 inches
500 Watts	72,000 lumens	82 inches
600 Watts	86,400 lumens	98 inches
700 Watts	100,800 lumens	114 inches
800 Watts	115,200 lumens	130 inches
900 Watts	129,600 lumens	146 inches



fig 1.1



fig 1.2



fig 1.3



\*All Motion sensor purchases come as a set, including a motion sensor and an L7 Wattstopper lens.

## ORDERING INFORMATION

SAMPLE ORDER NUMBER: CIT-1-100-40-1-6-1-1-1-X-X-1

SERIES	WATTAGE	KELVIN	OPTICS	LENS	FINISH	DRIVER VOLTAGE	REMOTE CABLE	MOTION SENSOR	BATTERY BACKUP	DLC
CIT-1 High Temp	100- (100W)	40- (4000K)	1- No Optics	6- Flat tempered glass clear	1- Black	1- 120/277V	1- 3'	X- No	X- No	1- Standard
	150- (150W)	50- (5000K)	2- 60°			4- 347/480V	2- 10'	1- Standard*	1- Yes	2- Premium
	200- (200W)		4- Aisle				3- 25'	2- Internet of Things*		
	250- (250W)						4- 50'			
	300- (300W)						5- 100'			
	400- (400W)						6- 150'			
	500- (500W)						7- 200'			
	600- (600W)						8- 250'			
	700- (700W)									
	800- (800W)									
	900- (900W)									

\* Motion Sensor part information: Standard (1) features sensors by Wattstopper with L7 Lens. Internet of Things (2) features sensors by Enlighted Sensors

\*\* Fixture includes a 6 foot Plug N Play Whip - see Power Cord ordering information on page 8 for additional options



# NCO Series LED - High Temperature

**195° F**

**90 CRI**



## FEATURES

- > Up to 195°F (90°C) at 60% light output, or up to 175°F (80°C) at 100% light output
- > Inventronics Drivers with less than 1% failure rate
- > Patent-pending design extends fixture life by helping prevent build-up of insulating dust and debris
- > Patent-pending remote driver minimizes fixture operating temperature without re-gridding required
- > Patent-pending LED board design eliminates illumination dead spots
- > Dimmable 0-10V
- > In-series transient voltage surge suppressor (TVSS) protects fixture against failure due to power supply surges
- > Optional motion sensor. Choose from standard by Wattstopper with L7 lens (fig 1.1 & 1.2\*), or Internet of Things (IOT) by Enlighted Sensors (fig 1.3).
- > UL 1598 listed
- > IP65 rated

## SPECIFICATIONS

Power Factor.....>0.9  
 Input Voltage ..... 120/277V & 347/480V  
 Performance.....Up to 151 lm/W  
 Operational Temperature..... -40°F to 195°F (-40°C to 91°C)  
 Distribution..... 120°, 60° & Aisle  
 Mount Type.....Suspension  
 Kelvin Temperature ..... 4000K, 5000K  
 Available Wattages. 100W, 150W, 200W, 250W, 300W, 400W  
 500W, 600W, 700W, 800W, 900W  
 Color Rendering Index (4000K) .....>70  
 Color Rendering Index (5000K) .....>90

## LUMINOUS OUTPUT & DIMENSIONS

Wattage	Output	Length
100 Watts	14,400 lumens	18 inches
150 Watts	21,600 lumens	26 inches
200 Watts	28,800 lumens	34 inches
250 Watts	36,000 lumens	42 inches
300 Watts	43,200 lumens	50 inches
400 Watts	57,600 lumens	66 inches
500 Watts	72,000 lumens	82 inches
600 Watts	86,400 lumens	98 inches
700 Watts	100,800 lumens	114 inches
800 Watts	115,200 lumens	130 inches
900 Watts	129,600 lumens	146 inches



fig 1.1



fig 1.2



fig 1.3

\*All Motion sensor purchases come as a set, including a motion sensor and an L7 Wattstopper lens.



## ORDERING INFORMATION

SAMPLE ORDER NUMBER: NCO-3-100-40-1-6-1-1-1-X-X-1

SERIES	WATTAGE	KELVIN	OPTICS	LENS	FINISH	DRIVER VOLTAGE	REMOTE CABLE	MOTION SENSOR	BATTERY BACKUP	DLC
NCO-3 High Temp	100- (100W)	40- (4000K)	1- No Optics	6- Flat tempered glass clear	1- Black	1- 120/277V	1- 3'	X- No	X- No	1- Standard
	150- (150W)	50- (5000K)	2- 60°			4- 347/480V	2- 10'	1- Standard*	1- Yes	2- Premium
	200- (200W)		4- Aisle				3- 25'	2- Internet of Things*		
	250- (250W)						4- 50'			
	300- (300W)						5- 100'			
	400- (400W)						6- 150'			
	500- (500W)						7- 200'			
	600- (600W)						8- 250'			
	700- (700W)									
	800- (800W)									
	900- (900W)									

\* Motion Sensor information: Standard (1) features sensors by Wattstopper with L7 lens. Internet of Things or IOT, (2) features sensors by Enlighted Sensors  
 \*\* Fixture includes a 6 foot Plug N Play Whip - see Power Cord ordering information on page 8 for additional options.

# Turret Series LED - High Temperature

**185° F**

**90 CRI**



## FEATURES

- > Patent-pending remote driver minimizes fixture operating temperature and allows fixture to evolve with changing plant floor demands with no re-gridding required
- > Inventronics Drivers with less than 1% failure rate
- > Dimmable 0-10V
- > In-series transient voltage surge suppressor (TVSS) protects fixture against failure due to dirty power and power supply surges
- > Up to 185°F (85°C)
- > Optional motion sensor. Choose from standard by Wattstopper with L7 lens (fig 1.1 & fig 1.2\*), or Internet of Things (IOT) by Enlighted Sensors (fig 1.3).
- > UL 1598 listed
- > IP65 rated

## SPECIFICATIONS

Power Factor.....>0.9  
 Input Voltage ..... 120/277V & 347/480V  
 Performance.....Up to 163 lm/W  
 Operational Temperature.....-40° to 185°F (-40°C to 85°C)  
 Distribution..... 120°  
 Mount Type..... Suspension  
 Available Wattages..... 100W, 150W, 200W, 250W, 300W  
 Kelvin Temperature ..... 4000K, 5000K  
 Color Rendering Index (4000K) .....>70  
 Color Rendering Index (5000K) .....>90

## LUMINOUS OUTPUT

Wattage	Output
100 Watts	13,940 lumens
150 Watts	22,180 lumens
200 Watts	32,730 lumens
250 Watts	39,910 lumens
300 Watts	49,550 lumens



fig 1.1



fig 1.2



fig 1.3

\*All Motion sensor purchases come as a set, including a motion sensor and an L7 Wattstopper lens.



## ORDERING INFORMATION

SAMPLE ORDER NUMBER: TUR-5-100-40-1-6-1-1-X-X-1

SERIES	WATTAGE	KELVIN	OPTICS	LENS	FINISH	DRIVER VOLTAGE	REMOTE CABLE	MOTION SENSOR	BATTERY BACKUP	DLC
TUR-5 High Temp	100- (100W)	40- (4000K)	1- No	6- Flat tempered glass clear	1- Black	1- 120-/77V	1- 3'	X- No	X- No	1- Standard
	150- (150W)	50- (5000K)				4- 347/480V	2- 10'	1- Standard*	1- Yes	2- Premium
	200- (200W)						3- 25'	2- Internet of Things*		
	250- (250W)						4- 50'			
	300- (300W)						5-100'			
							6- 150'			
							7- 200'			
							8- 250'			

\* Motion Sensor information: Standard (1) features sensors by Wattstopper with L7 lens. Internet of Things or IOT, (2) features sensors by Enlighted Sensors

\*\* Fixture includes a 6 foot Plug N Play Whip - see Power Cord ordering information on page 8 for additional options.



# Stainless Steel Garrison Series LED

145° F



Equipped with integrated latches

## STAINLESS STEEL HOUSING

### FEATURES

- > Stainless housing for optimal heat dissipation
- > Suspend or surface mount the fixture
- > In-series transient voltage surge suppressor (TVSS) protects fixture against failure due to dirty power and power supply surges
- > Featuring American made Thomas Research driver
- > Optional motion sensor. Choose from standard by Wattstopper with L7 lens (fig 1.1 & 1.2\*), or Internet of Things (IOT) by Enlighted Sensors (fig 1.3).
- > UL 1598 listed
- > Rated IP65

### SPECIFICATIONS

Input Voltage ..... 120/277V  
 Performance..... Up to 144 lm/W  
 Operational Temperature..... -40°F to 145°F (-40°C to 63°C)  
 Distribution..... 120°  
 Mount Type..... Suspended or Surface Mounted  
 Available Wattages..... 50W, 75W, 100W, 125W  
 Kelvin Temperature ..... 4000K, 5000K  
 Dimensions..... L51.8" x W7.5" x H4.4"  
 Color Rendering Index ..... >70

### LUMINOUS OUTPUT

Wattage	Output
50 Watts	7,200 lumens
75 Watts	10,800 lumens
100 Watts	14,400 lumens
125 Watts	18,000 lumens



fig 1.1



fig 1.2



fig 1.3

\*All Motion sensor purchases come as a set, including a motion sensor and an L7 Wattstopper lens.



## ORDERING INFORMATION

SAMPLE ORDER NUMBER: GAR-7-X50-40-1-3-2-1-1-X-X-1

SERIES	WATTAGE	KELVIN	OPTICS	LENS	FINISH	DRIVER VOLTAGE		MOTION SENSOR	BATTERY BACKUP	CORD
GAR-7	X50- (50W)	40- (4000K)	1- No Optics	3- Drop Poly Frosted	2- Stainless	1- 120-277V	1- N/A	X- No	X- No	1- 125V, 15amp, SB, 6ft
	X75- (75W)	50- (5000K)		6- Flat tempered glass clear				1- Standard*	1- Yes	3- 125V, 15amp, TL, 6ft
	100- (100W)							2- Internet of Things*		9- 277V, 15amp, TL, 6ft
	125- (125W)									D- 300V, Whip, 6ft

\* Motion Sensor part information: Standard (1) features sensors by Wattstopper with L7 Lens. Internet of Things (2) features sensors by Enlighted Sensors

\*\* Fixture Includes a 6 foot Hardwired Cord- see Power Cord ordering information on page 8 for additional options.



# **STANDARD TEMPERATURE**

Interior Lighting  
pg 17-22



# Citadel Series LED - Standard Temperature

**130° F**

**90 CRI**



## FEATURES

- > Up to 130°F (55°C)
- > Inventronics Drivers with less than 1% failure rate
- > Patent-pending design extends fixture life by helping prevent build-up of insulating dust and debris
- > Patent-pending remote driver minimizes fixture operating temperature without re-gridding required
- > Patent-pending LED board design eliminates illumination dead spots
- > Dimmable 0-10V
- > In-series transient voltage surge suppressor (TVSS) protects fixture against failure due to power supply surges
- > Optional motion sensor. Choose from standard by Wattstopper with L7 lens (fig 1.1 & 1.2\*), or Internet of Things (IOT) by Enlighted Sensors (fig 1.3).
- > UL 1598 listed
- > IP65 rated

## SPECIFICATIONS

Power Factor.....>0.9  
 Input Voltage ..... 120/277V & 347/480V  
 Performance.....Up to 160 lm/W  
 Operational Temperature..... -40°F to 130°F (-40°C to 55°C)  
 Distribution..... 120°, 60° & Aisle  
 Mount Type.....Suspension  
 Kelvin Temperature ..... 4000K, 5000K  
 Available Wattages..... 100W, 150W, 200W, 250W, 300W, 400W, 500W, 600W, 700W, 800W, 900W  
 Color Rendering Index (4000K) .....>70  
 Color Rendering Index (5000K) .....>90



## LUMINOUS OUTPUT & DIMENSIONS

Wattage	Output	Length
100 Watts	14,400 lumens	18 inches
150 Watts	21,600 lumens	26 inches
200 Watts	28,800 lumens	34 inches
250 Watts	36,000 lumens	42 inches
300 Watts	43,200 lumens	50 inches
400 Watts	57,600 lumens	66 inches
500 Watts	72,000 lumens	82 inches
600 Watts	86,400 lumens	98 inches
700 Watts	100,800 lumens	114 inches
800 Watts	115,200 lumens	130 inches
900 Watts	129,600 lumens	146 inches



fig 1.1



fig 1.2



fig 1.3



\*All Motion sensor purchases come as a set, including a motion sensor and an L7 Wattstopper lens.

## ORDERING INFORMATION

SAMPLE ORDER NUMBER: CIT-2-100-40-1-2-1-1-X-X-1

SERIES	WATTAGE	KELVIN	OPTICS	LENS	FINISH	DRIVER VOLTAGE	REMOTE CABLE	MOTION SENSOR	BATTERY BACKUP	DLC
CIT-2 Std Temp	100- (100W)	40- (4000K)	1- No Optics	2- Flat Poly Clear	1- Black	1- 120/277V	1- 3'	X- No	X- No	1- Standard
	150- (150W)	50- (5000K)	2- 60°	6- Flat tempered glass clear		4- 347/480V	2- 10'	1- Standard*	1- Yes	2- Premium
	200- (200W)		4- Aisle				3- 25'	2- Internet of Things*		
	250- (250W)						4- 50'			
	300- (300W)						5- 100'			
	400- (400W)						6- 150'			
	500- (500W)						7- 200'			
	600- (600W)						8- 250'			
	700- (700W)									
	800- (800W)									
	900- (900W)									

\* Motion Sensor part information: Standard (1) features sensors by Wattstopper with L7 Lens. Internet of Things (2) features sensors by Enlighted Sensors  
 \*\* Fixture includes a 6 foot Plug N Play Whip - see Power Cord ordering information on page 8 for additional options

# NCO Series LED - Standard Temperature

**130° F**

**90 CRI**



## FEATURES

- > Up to 130°F (55°C)
- > Inventronics Drivers with less than 1% failure rate
- > Patent-pending design extends fixture life by helping prevent build-up of insulating dust and debris
- > Patent-pending remote driver minimizes fixture operating temperature without re-gridding required
- > Patent-pending LED board design eliminates illumination dead spots
- > Dimmable 0-10V
- > In-series transient voltage surge suppressor (TVSS) protects fixture against failure due to power supply surges
- > Optional motion sensor. Choose from standard by Wattstopper with L7 lens (fig 1.1 & 1.2\*), or Internet of Things (IOT) by Enlighted Sensors (fig 1.3).
- > UL 1598 listed
- > IP65 rated

## SPECIFICATIONS

Power Factor.....>0.9  
 Input Voltage ..... 120/277V & 347/480V  
 Performance.....Up to 151 lm/W  
 Operational Temperature.....-40°F to 130°F (-40°C to 55°C)  
 Distribution..... 120°, 60° & Aisle  
 Mount Type.....Suspension  
 Kelvin Temperature ..... 4000K, 5000K  
 Available Wattages. 100W, 150W, 200W, 250W, 300W, 400W  
 500W, 600W, 700W, 800W, 900W  
 Color Rendering Index (4000K) .....>70  
 Color Rendering Index (5000K) .....>90

## LUMINOUS OUTPUT & DIMENSIONS

Wattage	Output	Length
100 Watts	14,400 lumens	18 inches
150 Watts	21,600 lumens	26 inches
200 Watts	28,800 lumens	34 inches
250 Watts	36,000 lumens	42 inches
300 Watts	43,200 lumens	50 inches
400 Watts	57,600 lumens	66 inches
500 Watts	72,000 lumens	82 inches
600 Watts	86,400 lumens	98 inches
700 Watts	100,800 lumens	114 inches
800 Watts	115,200 lumens	130 inches
900 Watts	129,600 lumens	146 inches



fig 1.1



fig 1.2



fig 1.3

\*All Motion sensor purchases come as a set, including a motion sensor and an L7 Wattstopper lens.



## ORDERING INFORMATION

SAMPLE ORDER NUMBER: NCO-4-100-40-1-2-1-1-1-X-X-1

SERIES	WATTAGE	KELVIN	OPTICS	LENS	FINISH	DRIVER VOLTAGE	REMOTE CABLE	MOTION SENSOR	BATTERY BACKUP	DLC
NCO-4 Std Temp	100- (100W)	40- (4000K)	1- No Optics	2- Flat Poly Clear	1- Black	1- 120/277V	1- 3'	X- No	X- No	1- Standard
	150- (150W)	50- (5000K)	2- 60°	6- Flat tempered glass clear		4- 347/480V	2- 10'	1- Standard*	1- Yes	2- Premium
	200- (200W)		4- Aisle				3- 25'	2- Internet of Things*		
	250- (250W)						4- 50'			
	300- (300W)						5- 100'			
	400- (400W)						6- 150'			
	500- (500W)						7- 200'			
	600- (600W)						8- 250'			
	700- (700W)									
	800- (800W)									
	900- (900W)									

\* Motion Sensor information: Standard (1) features sensors by Wattstopper with L7 lens. Internet of Things or IOT, (2) features sensors by Enlighted Sensors

\*\* Fixture includes a 6 foot Plug N Play Whip - see Power Cord ordering information on page 8 for additional options.



# Turret Series LED - Standard Temperature

125° F

90 CRI



## FEATURES

- > Up to 125°F (52°C)
- > Patent-pending remote driver minimizes fixture operating temperature and allows fixture to evolve with changing plant floor demands with no re-gridding required
- > Inventronics Drivers with less than 1% failure rate
- > Dimmable 0-10V
- > In-series transient voltage surge suppressor (TVSS) protects fixture against failure due to dirty power and power supply surges
- > Optional motion sensor. Choose from standard by Wattstopper with L7 lens (fig 1.1 & fig 1.2\*), or Internet of Things (IOT) by Enlighted Sensors (fig 1.3).
- > UL 1598 listed
- > IP65 rated

## SPECIFICATIONS

Power Factor.....	>0.9
Input Voltage .....	120/277V & 347/480V
Performance.....	Up to 163 lm/W
Operational Temperature.....	-40° to 125°F (-40°C to 52°C)
Distribution.....	120°
Mount Type.....	Suspension
Available Wattages.....	100W, 150W, 200W, 250W, 300W
Kelvin Temperature .....	4000K, 5000K
Color Rendering Index (4000K) .....	>70
Color Rendering Index (5000K) .....	>90

## LUMINOUS OUTPUT

Wattage	Output
100 Watts	14,400 lumens
150 Watts	21,600 lumens
200 Watts	28,800 lumens
250 Watts	36,000 lumens
300 Watts	43,200 lumens



fig 1.1



fig 1.2



fig 1.3

\*All Motion sensor purchases come as a set, including a motion sensor and an L7 Wattstopper lens.



## ORDERING INFORMATION

SAMPLE ORDER NUMBER: TUR-6-100-40-1-2-1-1-1-X-X-1

SERIES	WATTAGE	KELVIN	OPTICS	LENS	FINISH	DRIVER VOLTAGE	REMOTE CABLE	MOTION SENSOR	BATTERY BACKUP	DLC
TUR-6 Std Temp	100- (100W)	40- (4000K)	1- No	2- Flat Poly Clear	1- Black	1- 120-/77V	1- 3'	X- No	X- No	1- Standard
	150- (150W)	50- (5000K)		6- Flat tempered glass clear		4- 347/480V	2- 10'	1- Standard*	1- Yes	2- Premium
	200- (200W)						3- 25'	2- Internet of Things*		
	250- (250W)						4- 50'			
	300- (300W)						5-100'			
							6- 150'			
							7- 200'			
							8- 250'			

\* Motion Sensor information: Standard (1) features sensors by Wattstopper with L7 lens. Internet of Things or IOT, (2) features sensors by Enlighted Sensors

\*\* Fixture includes a 6 foot Plug N Play Whip - see Power Cord ordering information on page 8 for additional options.

# Linear High Bay



## FEATURES

- > Lightweight aluminum frame
- > Dimmable
- > Options available with normal lead times: Integrated occupancy sensor, Plug and Play cord
- > Clear polycarbonate lens
- > Hanging cables included
- > IP20 rated for indoor use
- > UL1598 Listed
- > Infrared motion sensor

## SPECIFICATIONS

Input Voltage .....120/277V  
 Performance.....Up to 130 lm/W  
 Calculated Lifetime ..... 155,000 hours  
 Operational Temperature.....-4°F to 122°F (-20°C to 50°C)  
 Distribution..... 110°  
 Mount Type..... Suspension, Surface Mount  
 Available Wattages.....100W, 165W, 210W, 300W  
 Available Kelvin Temperatures..... 4000K, 5000K  
 Available Lengths.....2 ft, 4 ft

## LUMINOUS OUTPUT

Wattage	4000K	5000K
100W	12,355 lm	12,710 lm
165W	20,917 lm	21,488 lm
210W	25,673 lm	26,299 lm
300W	38,572 lm	39,627 lm



## ORDERING INFORMATION

SAMPLE ORDER NUMBER: EPM-LHB-22-165-50-PR-1-PP-C

SERIES	PRODUCT	LENGTH	WATTAGE	KELVIN	PREMIUM	INPUT VOLTAGE	FIXTURE DISCONNECT	MOTION SENSOR	LENS
EPM - ePOWER Manufacturing	LHB - Linear High Bay LED	12 - 1 Ft x 2 Ft	100 - 100W	40 - 4000K 50 - 5000K	PR - Premium	1 - 120/277V	PP - Plug-and- Play HW - Factory Installed Hardwire Cord	(Blank) - No Motion Sensor MS - with Motion Sensor w/ lens	C - Clear
		22 - 2 Ft x 2 Ft	165 - 165W						
		14 - 1 Ft x 4 Ft	210 - 210W						
		24 - 2 Ft x 4 Ft	300 - 300W						
EPM	LHB				PR	1			C

\* Fixture includes a 6 foot Plug N Play whip - see Power Cord ordering information on page 8 for additional options.



# Linear Vapor Tight LED



## FEATURES

- > Durable aluminum casing for optimal heat dissipation
- > Suspended or Surface mount the fixture
- > Includes 6' hardwired cord
- > UL1598 Listed

## SPECIFICATIONS

Input Voltage ..... 120/277V  
 Performance ..... Up to 110 lm/W  
 Operational Temperature ..... -4°F to 131°F (-20°C to 55°C)  
 Distribution ..... 120°  
 Mount Type ..... Suspended or Surface Mounted  
 Available Wattages ..... 60W  
 Available Kelvin Temperatures ..... 5000K

## LUMINOUS OUTPUT

Wattage	5000K
60W	7,615 lm



## ORDERING INFORMATION

SAMPLE ORDER NUMBER: EPM-LL-VT-04-60-PF-50-PR-1-AA

SERIES	PRODUCT	TYPE	LENGTH	WATTAGE	TUBE OPACITY	KELVIN TEMP	PREMIUM	INPUT VOLTAGE	COLOR
EPM - ePOWER Manufacturing	LL -Linear LED	VT -Vapor Tight	04 - 4 Ft	60 - 60W	PF - Frosted	50 - 5000K	PR - Premium	1 - 120/277V	AA - Anodized Aluminum
EPM	LL	VT	04	60	PF	50	PR	1	AA

\* Fixture Includes a 6 foot Hardwired Cord- see Power Cord ordering information on page 8 for additional options.

# Linear Retrofit Kit



## FEATURES

- > Adjusts from 4" to 5-1/4"
- > Made in the USA
- > Polycarbonate frosted and clear lens
- > Calculated lifetime L70 205,000 hours
- > Damp listed
- > UL1598C Classified

## SPECIFICATIONS

Input Voltage ..... 120-277V  
 Performance..... Up to 145 lm/W  
 Operational Temperature..... 32°F to 113°F (0°C to 45°C)  
 Distribution..... 140°  
 Available Wattages..... 25W, 50W  
 Available Kelvin Temperatures..... 3000K, 4000K, 5000K  
 Available Length..... 4ft



Frosted Lens Option



Clear Lens Option

## LUMINOUS OUTPUT

Wattage	4000K	5000K
25W	4,050 lm	4,050 lm
50W	7,129 lm	7,166 lm



\* All data is for clear lens

## ORDERING INFORMATION

SAMPLE ORDER NUMBER: EPM-LR-04-25-50-F

SERIES	PRODUCT	SIZE	WATTAGE	KELVIN	LENS OPACITY
<b>EPM</b> - ePOWER Manufacturing	<b>LR</b> – Linear Retrofit LED	<b>04</b> - 4 Ft	<b>25</b> - 25W <b>50</b> - 50W	<b>30</b> - 3000K <b>40</b> - 4000K <b>50</b> - 5000K	<b>F</b> - Frosted <b>C</b> - Clear
<b>EPM</b>	<b>LR</b>	<b>04</b>			

\* Fixture cord not included- see Power Cord ordering information on page 8 for additional options.





# **STANDARD TEMPERATURE**

Exterior Lighting  
pg 24-25

# Wall Pack LED



### FEATURES

- > Unique funnel heat sink for better heat dissipation
- > Factory-installed twist lock photo eye, photocell & photocell shield ship with product
- > Installation caulk included with product
- > Separate LED driver and light source
- > Dark Sky compliant
- > UL1598 Listed

### LUMINOUS OUTPUT

Wattage	5000K
24W	2527 lm
48W	4575 lm
80W	8432 lm
100W	12831 lm

### SPECIFICATIONS

Input Voltage .....120/277V  
Performance..... Up to 107 lm/W  
Calculated Lifetime .....>76,000 Hours  
Operational Temperature.....-40°F to 122°F (-40°C to 50°C )  
Distribution..... Type III, Short  
Mount Type..... Wall Mount  
Available Wattages..... 24W, 48W, 80W, 100W  
Kelvin Temperatures ..... 5000K



### ORDERING INFORMATION

SAMPLE ORDER NUMBER: EPM-WP-048-50-3S-1-BZ

SERIES	PRODUCT	WATTAGE	KELVIN TEMP.	OPTIC DISTRIBUTION	INPUT VOLTAGE	COLOR
EPM - ePOWER Manufacturing	WP - Wall Pack	024 - 24W 048 - 48W 080 - 80W 100 - 100W	50 - 5000K	3S - Type III/Short	1 - 120/277V	BZ - Bronze
EPM	WP		50	3S	1	BZ

\* Fixture cord not included- see Power Cord ordering information on page 8 for additional options.



# Area LED with Optional Motion Sensor



## FEATURES

- > Square or Tenon mount bracket options
- > Optional built-in motion sensor
- > Easy installation and maintenance (toolless entry to access driver)
- > Dark Sky compliant
- > Photocell included with each fixture
- > UL1598 Listed

## SPECIFICATIONS

Input Voltage ..... 120/277V & 347/480V  
 Performance.....Up to 138 lm/W  
 Calculated Lifetime.....81,000 Hours  
 Operational Temperature.....-40°F to 122°F (-40°C to 50°C)  
 Distribution..... Type III, Medium  
 Mount Type.....Square Pole & Tenon Mount  
 Available Wattages.....100W, 150W, 200W, 250W, 300W  
 Kelvin Temperature ..... 5000K

## ACCESSORIES

Product Accessories	Part Number
Area LED with Motion Sensor Square Pole Mounting Brackets	EPM-AM-MB-SQ-BZ
Area LED with Motion Sensor Tenon Mounting Bracket, Bronze	EPM-AM-MB-TM-BZ
Area LED with Motion Sensor Motion Sensor Lens, 40' Height, Up to 100' Diameter	EPM-AM-MS-L7
Area LED with Motion Sensor Replacement Motion Sensor (Lenses ordered separately)	EPM-AM-MS
Area LED with Motion Sensor Replacement Photoeye	EPM-AM-PH

## LUMINOUS OUTPUT

Wattage	5000K
100W	14192 lm
150W	20736 lm
200W	27287 lm
250W	34363 lm
300W	42634 lm



Photo Eye  
(EPM-AM-PH)






## ORDERING INFORMATION

SAMPLE ORDER NUMBER: EPM-AM-100-50-3M-1-TM-BZ-MS




SERIES	PRODUCT	WATTAGE	KELVIN TEMP.	OPTIC DISTRIBUTION	INPUT VOLTAGE	MOUNTING TYPE	COLOR	MOTION SENSOR
EPM - ePOWER Manufacturing	AM - Area Light with optional Motion Sensor	100 - 100W 150 - 150W 200 - 200W 250 - 250W 300 - 300W	50 - 5000K	3M - Type III/Medium	1 - 120/277V 2 - 347/480V	SQ - Square Pole TM - Tenon Mount	BZ - Bronze	Blank - No Motion Sensor MS - with Motion Sensor w/lens
EPM	AM		50	3M			BZ	

\* Fixture cord not included- see Power Cord ordering information on page 8 for additional options.

# Sample Product Comparison- Std Temperature

					
	Tactik Lighting Turret	Tactik Lighting Citadel	Tactik Lighting NCO	Cree CXB Series	Energy Bank Inc OmegaLight Linear 2.0
In-series Transient Voltage Surge Suppressor (TVSS) to protect from dirty power including spikes, transients and lightning	✓	✓	✓	✗	✗
Programmable driver allows for precise light output	✓	✓	✓	✗	✗
Standardized Driver - eliminates multiple SKUs - same driver, multiple fixtures - NCO, Citadel, Turret	✓	✓	✓	✗	✗
Fast 1 week lead times	✓	✓	✓	✗	✗
IOT integrates lighting into other building systems	✓	✓	✓	✗	✗
Operational Temperature	up to 125°F (52°C)	up to 130°F (55°C)	up to 130°F (55°C)	up to 122°F (50°C)	up to 122°F (50°C)
Warranty	10 year warranty	10 year warranty	10 year warranty	10 year warranty	5 year warranty
Performance	163 lumens/watt	160 lumens/watt	151 lumens/watt	127 lumens/watt	150 lumens/watt
Driver	Remote or Integrated	Remote or Integrated	Remote or Integrated	Integrated Only	Integrated Only
Kelvin Temps Available	4000K, 5000K	4000K, 5000K	4000K, 5000K	4000K, 5000K	4000K, 5000K
Distribution	120° Only	60°, 120°, Aisle	60°, 120°, Aisle	120° Only	120° Only
Lenses	Flat Poly Clear & Flat Tempered Glass	Flat Poly Clear & Flat Tempered Glass	Flat Poly Clear & Flat Tempered Glass	Prismatic Drop Lens, Conical Bottom Lens, Clear Prismatic Drop Acrylic Lens, Clear Conical Acrylic Lens	Frosted Lens
Light Output (Lumens) - Higher is better	14,400 - 49,550	13,220 - 129,600	12,960 - 129,600	18,000 - 24,000	16,319 - 31,170
CRI - Higher is better	5000K - 90 CRI 4000K - 70 CRI	5000K - 90 CRI 4000K - 70 CRI	5000K - 90 CRI 4000K - 70 CRI	Minimum 80 CRI	Minimum 80 CRI
Wattages available	100W - 300W	100W - 900W	100W - 900W	160W or 240W	105W - 210W
IP Rating	IP65	IP65	IP65	IP65	IP65
Options	Plug & Play power cord; Motion Sensor; Mounting options; Battery Backup; Remote Driver up to 250 feet	Plug & Play power cord; Motion Sensor; Mounting options; Battery Backup; Remote Driver up to 250 feet	Plug & Play power cord; Motion Sensor; Mounting options; Battery Backup; Remote Driver up to 250 feet	Mounting Options including J-Box, Pendant, or Hook & Cord	Hardwire Cord; Motion Control Sensor

# Sample Product Comparison- High Temperature

			
	Tactik Lighting Turret	Tactik Lighting Citadel	Tactik Lighting NCO
In-series Transient Voltage Surge Suppressor (TVSS) to protect from dirty power including spikes, transients and lightning	✓	✓	✓
Thermistor - LED's are protected from premature light depreciation due to overheating	✓	✓	✓
Programmable driver allows for precise light output	✓	✓	✓
Standardized Driver - eliminates multiple SKUs - same driver, multiple fixtures - NCO, Citadel, Turret	✓	✓	✓
Fast 1 week lead times	✓	✓	✓
IOT integrates lighting into other building systems	✓	✓	✓
Made in USA - Sheboygan, WI	✓	✓	✓
Operational Temperature	185°F (80°C)	195°F (90°C)	195°F (90°C)
Warranty	10 year warranty	10 year warranty	10 year warranty
Performance	163 lumens/watt	160 lumens/watt	151 lumens/watt
Driver	Remote or Integrated	Remote or Integrated	Remote or Integrated
Kelvin Temps Available	4000K, 5000K	4000K, 5000K	4000K, 5000K
Distribution	120°	60°, 120°, Aisle	60°, 120°, Aisle
Lenses	Flat Poly Clear & Flat Tempered Glass	Flat Poly Clear & Flat Tempered Glass	Flat Poly Clear & Flat Tempered Glass
Light Output (Lumens) - Higher is better	13,940 - 49,550	13,220 - 126,000	12,960 - 123,300
CRI - Higher is better	4000K - 70 CRI 5000K - 90 CRI	4000K - 70 CRI 5000K - 90 CRI	4000K - 70 CRI 5000K - 90 CRI
Wattages available	100W - 300W	100W - 900W	100W - 900W
IP Rating	IP65	IP65	IP65
Options	Plug & Play power cord; Motion Sensor; Mounting options; Battery Backup; Remote Driver up to 250 feet	Plug & Play power cord; Motion Sensor; Mounting options; Battery Backup; Remote Driver up to 250 feet	Plug & Play power cord; Motion Sensor; Mounting options; Battery Backup; Remote Driver up to 250 feet
Dimmable 0-10V	✓	✓	✓



		
Dialight Vigilant LED	Holophane Phuzion LED	Led in Action Superlux
✗	✗	✓
✗	✗	✗
✗	✗	✗
✗	✗	✓
✗	✗	✓
✗	✗	✗
✗	✗	✗
149°F (65°C)	175°F (70°C)	122°F (50°C)
10 year warranty	5 year warranty	5 year warranty
145 lumens/watt	119 lumens/watt	160 lumens/watt
Integrated Only	Remote or Integrated	Integrated Only
2700K, 4000K, 5000K	3000K, 3500K, 4000K, 5000K	4000K, 5000K
Oval, Medium, Narrow, Wide	Narrow, Medium, Wide, or Focus	30°, 60°, 60°, 90°, 120°
Glass	Frosted or Acrylic	Poly Lens, Glass Cover High Temp ROBAX Glass
10,250 - 26,250	12,000 - 60,000	72,000 - 96,000
Minimum 80 CRI	70, 80, 90 CRI	Minimum 70 CRI
80W, 102W, 129W, 186W	81W, 130W, 170W, 218W, 254W, 288W, 323W, 374W, 437W	450W, 600W
IP66	IP64	IP65
Occupancy Sensor; Mounting Options	Dimming Sensors; Mounting Options; Wire guard; Battery Backup	Hardwire
✗	✗	✗



## BACKED WITH CONFIDENCE. INSTALLED BY YOU.



### PRODUCTS MADE IN AMERICA

- > First industrial lighting manufacturer to offer America-made products
- > Shortens lead times
- > Get American quality not foreign tariffs



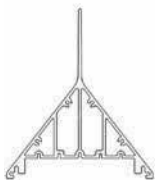
### REFURBISHMENT PROGRAM

- > Lowest life cycle cost
- > Low LED & driver running temperatures
- > Rugged military-grade design
- > Quality materials, components and construction

**195° F**

### HIGHER HEAT RATINGS

- > Fixtures rated up to 195°F
- > Up to a 30% increase compared to leading competitors
- > Unlike competitors, there's no fall-off in lumen output as heat limit is approached



### PATENT PENDING DESIGNS

- > Set new standards for cooling efficiency over the life of the fixture
- > Innovative, vertical exterior cooling fin dissipates heat while preventing dust and debris build-up
- > Internal cooling fins provide additional protection against dust and debris



### 5-7 DAY LEAD TIMES

- > Many models feature leading-edge, modular design
- > Allows us to ship orders in less time, even custom orders



## THE TACTIK ADVANTAGE

At Tactik Lighting,  
we do things differently.

Our team has decades  
of experience helping  
hundreds of clients.

We've seen what doesn't work  
and we refuse to do it that way.

Our standards are set high  
only to deliver the very best  
products to our clients.



3115 N 21<sup>st</sup> Street,  
Suite 2, Sheboygan, WI 53083  
920-287-3840  
sales@tactik.com

[tactiklighting.com](http://tactiklighting.com)





## BACKED WITH CONFIDENCE. INSTALLED BY YOU.



### PRODUCTS MADE IN AMERICA

- > First industrial lighting manufacturer to offer America-made products
- > Shortens lead times
- > Get American quality not foreign tariffs



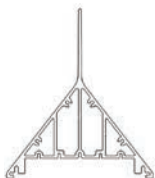
### REFURBISHMENT PROGRAM

- > Lowest life cycle cost
- > Low LED & driver running temperatures
- > Rugged military-grade design
- > Quality materials, components and construction

**195° F**

### HIGHER HEAT RATINGS

- > Fixtures rated up to 195°F
- > Up to a 30% increase compared to leading competitors
- > Unlike competitors, there's no fall-off in lumen output as heat limit is approached



### PATENT PENDING DESIGNS

- > Set new standards for cooling efficiency over the life of the fixture
- > Innovative, vertical exterior cooling fin dissipates heat while preventing dust and debris build-up
- > Internal cooling fins provide additional protection against dust and debris



### 5-7 DAY LEAD TIMES

- > Many models feature leading-edge, modular design
- > Allows us to ship orders in less time, even custom orders

**WattStopper**  
**legrand**

**enlightened**  
A Siemens Company

## THE TACTIK ADVANTAGE

At Tactik Lighting,  
we do things differently.

Our team has decades  
of experience helping  
hundreds of clients.

We've seen what doesn't work  
and we refuse to do it that way.

Our standards are set high  
only to deliver the very best  
products to our clients.



3115 N 21<sup>st</sup> Street,  
Suite 2, Sheboygan, WI 53083  
920-287-3840  
sales@tactik.com

[tactiklighting.com](http://tactiklighting.com)

