

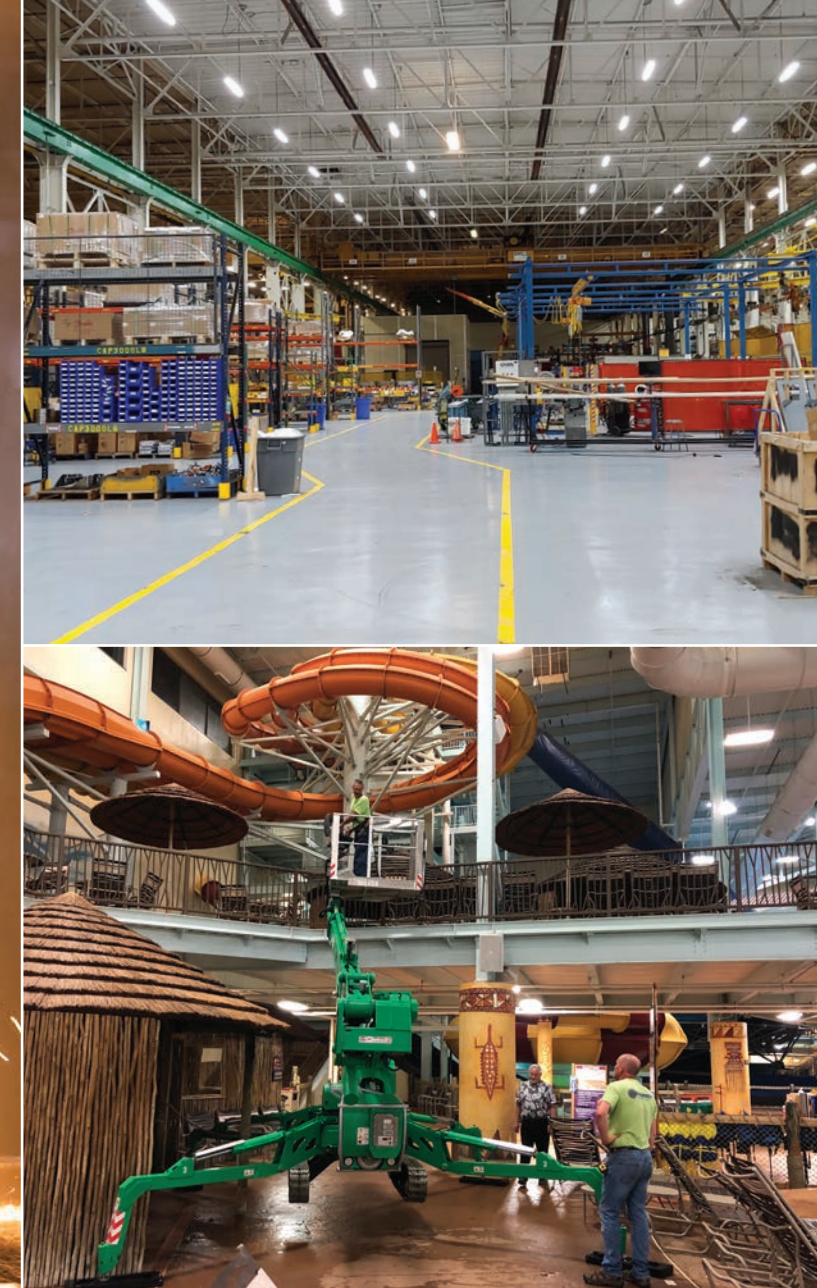


**COMMITTED TO OFFERING AMERICAN INDUSTRY
A BRIGHTER FUTURE**

LIGHTING CATALOG



Our Reliability Has Been Proven Under the Harshest Conditions Imaginable



LEDs MADE FOR THE REAL WORLD — YOUR WORLD.

In theory, LED lighting is supposed to offer significantly improved energy efficiency compared to more traditional commercial and industrial lighting. In reality, environmental factors – including temperature, dust, grit, vibration, moisture and corrosive vapors – can degrade LED performance and reliability rapidly. As a result, American businesses have become increasingly frustrated with all the cheaply designed-and-made products from overseas. You demanded better. We delivered.



WELCOME TO MILITARY-GRADE LED LIGHTING

Designed and built to a higher standard to deliver the performance, reliability and energy savings you expect from LEDs.

- > Built-In Protection includes seals and gaskets to keep contaminants out
- > Added Reliability and consistency of performance thanks to transient voltage surge suppression
- > Added Durability of best-in-class branded drivers with soldered wires
- > Extended Life due to low LED and driver running temperatures results in the lowest life cycle costs of any industrial-grade LED lighting

KEEP YOUR COOL WITH REMOTE DRIVERS.

Most Tactik lights utilize remote drivers to prevent unwanted heat build-up inside the fixture, which can degrade performance and is a leading cause of premature fixture failure.

 Remote drivers also offer added flexibility, allowing you to easily and economically adjust your lighting to evolving plant floor needs – without costly and time-consuming re-gridding.

MANAGE MORE EFFECTIVELY WITH SMART TECHNOLOGY.

 Turn your lighting into smart building solutions with the only U.S. industrial LED lighting manufacturer to offer the world’s most advanced wireless lighting control capabilities – Enlighted; A Siemens Company.

- > Improve Workflow using space utilization, motion and occupancy data
- > Optimize Energy Savings with daylight harvesting and task tuning data
- > Increase Productivity of employees and assets with RFID location technology



From left to right: Wayne Rettig (Creative Director), Dave Wasmer (New Product Development Engineer), Tim Wasmer (Founder & CEO), Sami Richter (Marketing Administrator), Jeff Strauss (Electrician & Team Leader), Sheila Oppeneer (Production & Customer Service Specialist), and Chris Drews (Production Team Leader).



VETERAN OWNED COMPANY DEDICATED TO PRODUCTS THAT ARE MILITARY GRADE TOUGH

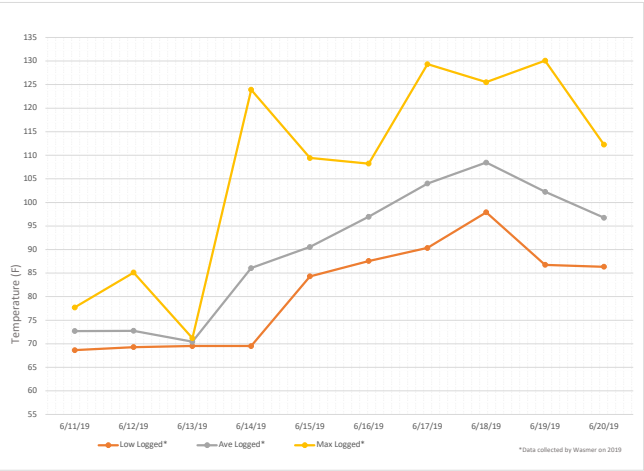
Tactik Lighting CEO and Lead Energy Expert Tim Wasmer, a U.S. Army veteran, makes sure that our "failure is not an option" mindset permeates the entire company. We are far more than just LED lighting engineers. We're passionately committed to being the team our clients depend on for the right energy efficiency solutions for their businesses. On time. Within budget. Delivering results as promised.

HOW DO OUR PRODUCTS HOLD UP?

The team at Tactik Lighting put our military-grade light fixtures to the test. They held up - under the weight of a 5800 lb jeep! That is the strength and durability you can expect from all of the products manufactured and sold by Tactik Lighting.



Military-Grade Is a Matter of Integrity; So Is Our Word



EXTREME TEMPERATURE TESTING



CORROSIVE TESTING AND MORE

TACTIK LABS IS YOUR ADDED ASSURANCE OF RELIABILITY

Our LED lighting is designed to a higher standard. So is our validation process.

At our in-house lab testing facility, our products undergo rigorous testing to provide you every assurance possible that all Tactik LED lighting will perform and last as promised.

While others may talk about performance and reliability in harsh environments, Tactik Labs documents it. Temperature extremes – and even heat build-up. Check. The ability to effectively resist the effects of dust, grit, moisture and corrosive gases. Check.

Because we want to help you make the best-informed decisions possible regarding your LED lighting choices, we also test leading competitors’ units. That way, you can see how our Military-Grade LED Lighting stacks up against the competition in side-by-side comparisons. Through years of testing, including 3rd party UL and DLC testing, we’ve learned a lot. And we look forward to sharing what we’ve learned with you. After all, the integrity of your LED lighting and the company that manufactures it matters. You have our word on it.

Foot Candle Ordering Information

Footcandle Averages 20'x20' grid 120 degree

Lumens									
50000	124.3	113.4	106.58	100.85	95.77	91.03	86.2	81.7	77.37
45000	111.84	102.04	95.9	90.74	86.17	81.91	77.56	73.52	69.62
40000	99.45	90.73	84.27	80.69	76.62	72.83	68.97	65.37	61.91
35000	87	79.37	74.59	70.59	67.03	63.71	60.33	57.18	54.16
30000	74.6	68.06	63.97	60.53	57.48	54.64	51.74	49.04	46.44
25000	62.15	56.7	53.29	50.42	47.89	45.51	43.1	40.85	38.69
20000	49.7	45.34	42.61	40.32	38.29	36.4	34.46	32.66	30.94
15000	37.3	34.03	31.99	30.26	28.74	27.32	25.87	24.52	23.22
10000	24.85	22.67	21.3	20.16	19.14	18.2	17.23	16.33	15.47
5000	12.5	11.36	10.68	10.1	9.61	9.12	8.63	8.18	7.75
Height	10'	15'	20'	25'	30'	35'	40'	45'	50'

Footcandle Averages 25'x25' grid 120 degree

Lumens									
50000	84.43	75.22	69.59	65.26	61.55	58.31	55.32	52.56	49.67
45000	75.97	67.68	62.62	58.73	55.39	52.47	49.78	47.3	44.7
40000	67.55	60.18	55.68	52.22	49.25	46.65	44.26	42.05	39.74
35000	59.09	52.64	48.71	45.68	43.08	40.81	38.72	36.79	34.76
30000	50.68	45.14	41.76	39.17	36.94	35	33.2	31.55	29.81
25000	42.21	37.61	34.79	32.62	30.77	29.15	27.68	26.28	24.83
20000	33.76	30.07	27.82	26.09	24.61	23.32	22.12	21.01	19.86
15000	25.33	22.57	20.88	19.59	18.47	17.5	16.6	15.77	14.9
10000	16.88	15.04	13.91	13.05	12.3	11.66	11.06	10.51	9.93
5000	8.46	7.53	6.97	6.54	6.17	5.84	5.54	5.27	4.98
Height	10'	15'	20'	25'	30'	35'	40'	45'	50'

Footcandle Averages 25'x25' grid 60 degree

Lumens									
50000	89.46	83.92	76.64	72.38	69.36	66.89	64.67	62.44	60.27
45000	80.5	75.51	68.97	65.14	62.41	60.19	58.91	56.18	54.23
40000	71.57	67.13	61.31	57.91	55.49	53.51	51.74	49.95	48.21
35000	62.61	58.73	53.64	50.66	48.55	46.82	45.26	43.7	42.18
30000	53.68	50.35	45.99	43.43	41.62	40.14	38.8	37.46	36.16
25000	44.72	41.95	38.31	36.18	34.67	33.44	32.32	31.21	30.13
20000	35.78	33.57	30.66	28.95	27.74	26.76	25.87	24.97	24.11
15000	26.82	25.16	22.98	21.71	20.8	20.06	19.39	18.72	18.07
10000	17.9	16.87	15.33	14.47	13.87	13.38	12.93	12.49	12.05
5000	8.93	8.38	7.65	7.23	6.93	6.68	6.45	6.24	6.02
Height	10'	15'	20'	25'	30'	35'	40'	45'	50'

	0-10fc		31-40fc		61-70fc
	11-20fc		41-50fc		71+ fc
	21-30fc		51-60fc		

HOW MANY FOOTCANDLES DO I NEED?

Light levels are a very sensitive conversation. Too much light and spotty or non-uniform light, can both be hard on the eyes. You will want to make sure you have enough uniformly distributed light to do the job efficiently and effectively. A simple rule of thumb for lighting requirements is 20 footcandles for a warehouse, 40 footcandles for production areas and 60 footcandles for inspection areas and retail applications. A best practice is the use of a footcandle meter on a walk around of your facility. This will help you determine which areas are well lit and allow comparison to recommended IES light levels. The IES provides guidelines for specific light levels by work area and industry. Call us at Tactik Lighting for assistance with IES recommendations and best practices for your application.

HOW MANY LUMENS DO I NEED TO REACH THE FOOTCANDLE RECOMMENDATIONS THAT I DETERMINED FOR MY AREA?

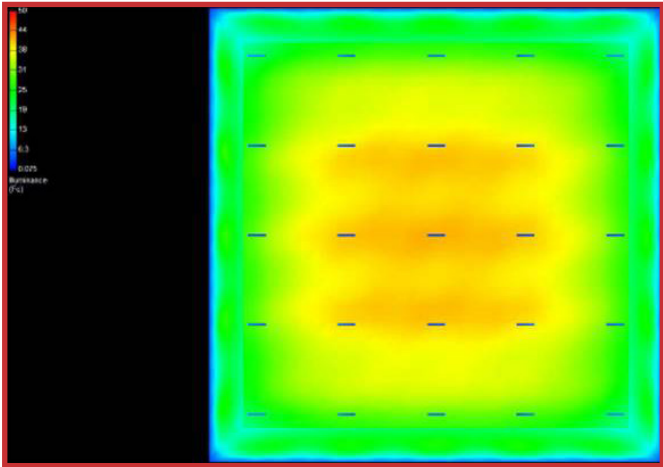
Many variables go into the decision on light fixture lumens, including but not limited to, surface (floor-wall-ceiling) reflectance, airborne particulates, obstructions, fixture efficiency, lens material (acrylic-polycarbonate-glass), lens transparency and height and distance between fixtures. The best solution to determining precise needs is to have Tactik Lighting professionals prepare a custom lighting layout for you.

The tables on this page are provided to help quickly guide you to a fixture lumen package that will be perfect for your application.

Optics Ordering Information

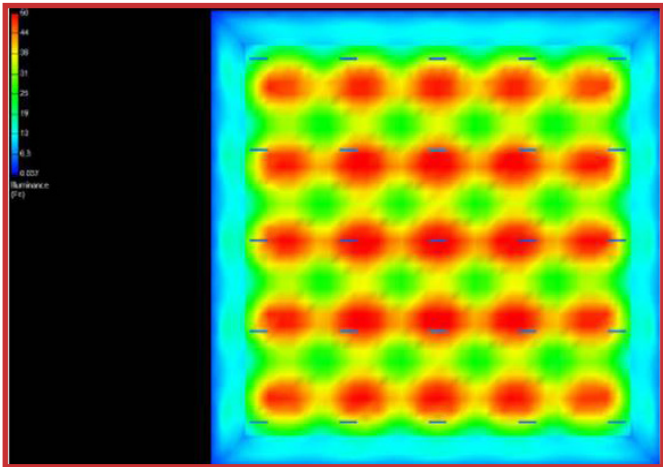
NO OPTICS

> Great for general illumination. No Optics are also great if you want to maximize horizontal light & to achieve uniform lighting overall. Ideal for 30 feet and below.



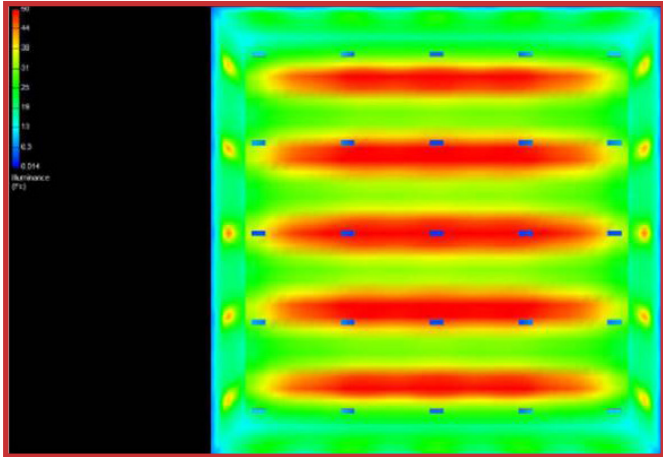
60 DEGREE OPTICS

> Great for higher ceilings. Best used for fixtures mounted 30+ feet up. (This image captures a 25 foot mounting height).



AISLE OPTICS

> Great for racking. With Aisle Optics, light is not wasted in adjoining aisles. This means you can reduce the number of fixtures in your facility, or can substantially reduce wattage when switching from HID or Flourescents to LED.



Motion Sensor Ordering Information

Wattstopper Low Voltage High/Low/Off PIR Fixture Integrated Outdoor Photo/Motion Sensor (Standard Ordering Selection)



DESCRIPTION

> The standard Wattstopper Motion Sensor mounts in an outdoor lighting fixture and provides multi-level control based on motion and/or daylight contribution. It controls 0-10 VDC dim-to-off LED drivers or ballasts, or works with a power pack to control other loads. When used with an FSP-Lx Lens, the sensor is rated for wet and cold locations. All control parameters are adjustable via a wireless configuration tool capable of storing and transmitting sensor profiles.

FEATURES

- > Controls 0-10V dim-to-off LED drivers or ballasts, or works with a power pack to control other loads
- > IP66 rated with choice of lenses for wet and outdoor locations, and mounting heights from 8’ to 40’
- > Configuration tool stores six sensor profiles for quick setup and adjustment of multiple sensors
- > Polycarbonate construction; flame retardant, UV resistant, impact resistant, recyclable

Enlighted Ruggedized IoT Motion Sensor (Premium Ordering Selection)

DESCRIPTION

> The Ruggedized Sensor, 8-pin, is a complete sensing and lighting control node powered from its attached light fixture. Sensor information combined with a configurable behavior profile make the sensor an integral component of an intelligent lighting control and sensing solution. With integrated wireless communications for data transmission and remote configuration along with autonomous fixture-level control, this sensor brings advanced lighting automation to a whole new level.



FEATURES

- > Enlighted Sensor Interface (ESI): IoT Ready™ LED drivers and Enlighted Control Units communicate with the sensor via a serial interfaces providing access to energy consumption, and digital lighting control.
- > Localized Lighting Control: Light-level schedules, preferences, and behavior profiles for each fixture are wirelessly communicated during system setup and locally stored to ensure continuous operation.
- > Edge Sensing: Local processing capability supports advanced sensing and detection algorithms, providing optimization of existing features and enabling future applications.
- > Bluetooth Low Energy: An embedded BLE radio allows the sensor to receive, transmit beacons and support communication with lighting control devices and other sensors.
- > Occupancy and Thermal Sensing: A digital Passive Infrared (PIR) sensor combined with separate ambient and temperature sensing support precise motion identification while minimizing false detection events
- > Room and Zone Control: Pairs with room control switches for code-compliant manual-on or auto-off capability. Sensors can be grouped into zones that share occupancy sensing data and coordinate light control based on detected motion.
- > Two lens options are offered to cover standard (<18 ft.) and high-bay (up to 50 ft.) ceilings.

Power Cord Ordering Information

FEATURES

- > Choose a whip, straight blade or twist lock cord
- > Hardwire or Plug and Play connection to the fixture
- > Lengths- 6ft or 12 ft; contact us for a custom length

POWER CORD OPTIONS

Series	Fixture Disconnect	Voltage	Plug Amp Rating	Plug Attachment Type	Length
PC - Power Cord	HW - Factory Installed Hardwire Cord PP - Plug N Play Connector	125 - 120V	15 - 15 Amps 20 - 20 Amps	SB - Straight Blade TL - Twist Lock	6 - 6 Feet 12 - 12 Feet
		250 - 250V			
		277 - 277V			
		480 - 480V 600 - 600V			
PC					

POWER CORD WHIP OPTIONS

Series	Fixture Disconnect	Voltage	Whip	Length
PC - Power Cord	HW - Factory Installed Hardwire Cord PP - Plug N Play Connector	300 - 300V 600 - 600V	W - Whip	6 - 6 Feet 12 - 12 Feet
PC			W	

Contact Information | How to Order

TO ORDER:

By phone: 920-287-3840
By e-mail: sales@tactik.com

OPERATING HOURS:

8am-4pm central time, Monday through Friday.

SHIPPING:

All orders are shipped from our facilities in Wisconsin and are subject to normal shipping fees. Shipping is free after accumulating purchases of greater than \$100,000 in any calendar year.

PAYMENT TERMS:

Net 15 days.

RETURNS:

Any product purchased from Tactik Lighting can be returned in the original packaging, unused and in salable condition for a 15% restocking fee. Returns need to be initiated with Tactik Lighting customer service within 45 days of product delivery. Customer is responsible for return shipping costs. Credit will be issued after product has been received and inspected by Tactik Lighting.

Proud to Be the First to Offer American-Made Industrial LEDs



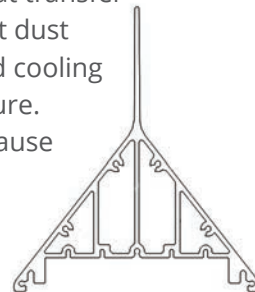
INTRODUCING LED LIGHTING MADE IN AMERICA'S HEARTLAND

Our latest generation of Military-Grade LED lighting includes fixtures made right here in America. Now, you can get American made quality and craftsmanship you can see and feel. What you won't see is import tariffs tacked onto your fixture price tag.

As a veteran owned business, we understand the importance of offering our customers lasting American values.

PATENT-PENDING DESIGNS REDEFINE HEAT DISSIPATION

Our NCO and Citadel Series feature an innovative, vertical exterior heat transfer cooling fin to dissipate heat while preventing dust and debris build-up. In addition, internal heat transfer cooling fins are protected against dust and debris build-up for improved cooling efficiency over the life of the fixture. These designs look different because they are different.



HIGHER HEAT RATINGS MEAN LONGER LIFE

195° F

Our high-heat rated units now feature up to a 30% increase in heat threshold compared to leading competitors.

What's more, unlike competitors that experience up to a 45% fall-off in lumen output as they reach their high-heat rating, our fixtures have no fall-off in lumen output as they approach the limits of their heat rating.

4 WEEK LEAD TIMES

Leading-edge, modular design and advanced manufacturing capabilities allow us to ship orders, even custom orders, in less time.

And all our products are backed by industry-leading warranties for added peace of mind.



Put it all together and you start to see the real value of lighting made in America specifically for American business.

The Tactik Lighting Difference

**TACTIK LIGHTING “BUY IT ONCE”
NO OBSOLESCENCE PHILOSOPHY**

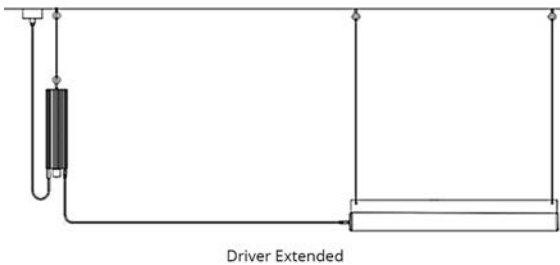
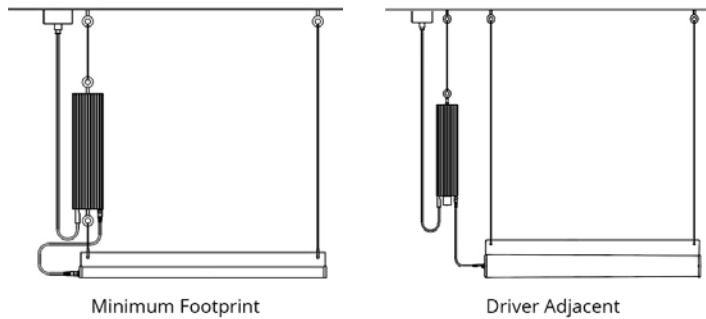
At Tactik Lighting we believe in continuous innovation and market disruption. One innovation is what we call our “Buy it Once” philosophy. Our products are designed and built to last long after many others have failed, but eventually they will need to be replaced. Ever had a situation where a couple of fixtures fail, only to find they have been discontinued or redesigned so that replacements will not match the existing array? Not with Tactik Lighting. Tactik’s Refurbishment program allows product, out of warranty and at the end of its expected life, to be returned to the factory for reconditioning. This includes new wearable parts such as LED boards, drivers and transient voltage suppressors. Non wearable parts, such as housings and mounting are reconditioned and a virtually new



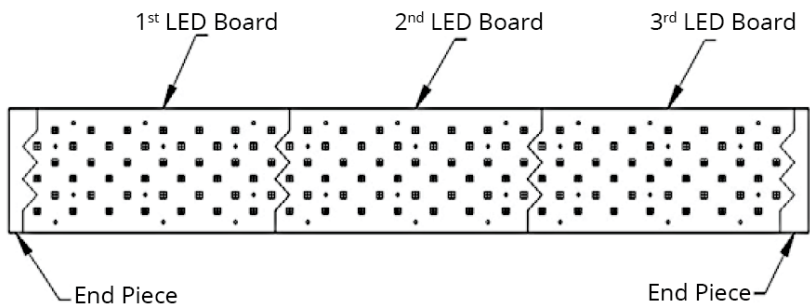
and updated product is returned, at a much lower price and with a full 10 year warranty. They also will match your existing fixtures. No one knows what the LED technology will be in 10 years, but this non obsolescence policy promotes sustainability and maintains state of the art technology, in the same form factor.

**ENHANCE COOLING AND ELIMINATE
LED RE-GRIDDING HEADACHES**

With leading competitive units, the LED driver is inside the light, which results in a lot of heat. However, the Citadel Series features remotely mounted drivers. This approach helps keep the operating temperatures inside the fixture lower. It also allows more effective cooling of the driver, safeguarding the integrity



of the driver as well as the LED light itself. Should changes in plant floor layout dictate the need to alter fixture placement, this can be accomplished quickly and easily without re-gridding hassles. Simply change out the power cord for one of suitable length to reach the new location of the light.



**UNIFORM LED LIGHTING EFFICIENTLY
CONFIGURED TO YOUR NEEDS**

Patent-pending shark tooth design enables LED boards to be configured for any of 11 models, ranging from 100-900 Watts. Resulting array provides uniform light distribution with no dead spots.

HIGH TEMPERATURE

Interior Lighting
pg 15-18

Citadel Series LED - High Temperature

195° F

90 CRI



FEATURES

- > Up to 195°F (90°C) at 60% light output, or up to 175°F (80°C) at 100% light output
- > Inventronics Drivers with less than 1% failure rate
- > Patent-pending design extends fixture life by helping prevent build-up of insulating dust and debris
- > Patent-pending remote driver minimizes fixture operating temperature without re-gridding required
- > Patent-pending LED board design eliminates illumination dead spots
- > Dimmable 0-10V
- > In-series transient voltage surge suppressor (TVSS) protects fixture against failure due to power supply surges
- > Optional motion sensor. Choose from standard by Wattstopper with L7 lens (fig 1.1 & 1.2*), or Internet of Things (IOT) by Enlighted Sensors (fig 1.3).
- > UL 1598 listed
- > IP65 rated

SPECIFICATIONS

Power Factor.....>0.9
Input Voltage 120/277V & 347/480V
Performance.....Up to 160 lm/W
Operational Temperature.....-40°F to 195°F (-40°C to 90°C)
Distribution..... 120°, 60° & Aisle
Mount Type.....Suspension
Kelvin Temperature 4000K, 5000K
Available Wattages..... 100W, 150W, 200W, 250W, 300W, 400W, 500W, 600W, 700W, 800W, 900W
Color Rendering Index (4000K)>70
Color Rendering Index (5000K)>90

LUMINOUS OUTPUT & DIMENSIONS

Wattage	Output	Length
100 Watts	14,400 lumens	18 inches
150 Watts	21,600 lumens	26 inches
200 Watts	28,800 lumens	34 inches
250 Watts	36,000 lumens	42 inches
300 Watts	43,200 lumens	50 inches
400 Watts	57,600 lumens	66 inches
500 Watts	72,000 lumens	82 inches
600 Watts	86,400 lumens	98 inches
700 Watts	100,800 lumens	114 inches
800 Watts	115,200 lumens	130 inches
900 Watts	129,600 lumens	146 inches



fig 1.1



fig 1.2



fig 1.3



*All Motion sensor purchases come as a set, including a motion sensor and an L7 Wattstopper lens.

ORDERING INFORMATION

SAMPLE ORDER NUMBER: CIT-1-100-40-1-6-1-1-1-X-X-1

SERIES	WATTAGE	KELVIN	OPTICS	LENS	FINISH	DRIVER VOLTAGE	REMOTE CABLE	MOTION SENSOR	BATTERY BACKUP	DLC
CIT-1 High Temp	100- (100W)	40- (4000K)	1- No Optics	6- Flat tempered glass clear	1- Black	1- 120/277V	1- 3'	X- No	X- No	1- Standard
	150- (150W)	50- (5000K)	2- 60°			4- 347/480V	2- 10'	1- Standard*	1- Yes	2- Premium
	200- (200W)		4- Aisle				3- 25'	2- Internet of Things*		
	250- (250W)						4- 50'			
	300- (300W)						5- 100'			
	400- (400W)						6- 150'			
	500- (500W)						7- 200'			
	600- (600W)						8- 250'			
	700- (700W)									
	800- (800W)									
	900- (900W)									

* Motion Sensor part information: Standard (1) features sensors by Wattstopper with L7 Lens. Internet of Things (2) features sensors by Enlighted Sensors
** Fixture includes a 6 foot Plug N Play Whip - see Power Cord ordering information on page 10 for additional options

NCO Series LED - High Temperature

195° F

90 CRI



FEATURES

- > Up to 195°F (90°C) at 60% light output, or up to 175°F (80°C) at 100% light output
- > Inventronics Drivers with less than 1% failure rate
- > Patent-pending design extends fixture life by helping prevent build-up of insulating dust and debris
- > Patent-pending remote driver minimizes fixture operating temperature without re-gridding required
- > Patent-pending LED board design eliminates illumination dead spots
- > Dimmable 0-10V
- > In-series transient voltage surge suppressor (TVSS) protects fixture against failure due to power supply surges
- > Optional motion sensor. Choose from standard by Wattstopper with L7 lens (fig 1.1 & 1.2*), or Internet of Things (IOT) by Enlighted Sensors (fig 1.3).
- > UL 1598 listed
- > IP65 rated

SPECIFICATIONS

Power Factor.....>0.9
Input Voltage 120/277V & 347/480V
Performance.....Up to 151 lm/W
Operational Temperature.....-40°F to 195°F (-40°C to 91°C)
Distribution..... 120°, 60° & Aisle
Mount Type.....Suspension
Kelvin Temperature 4000K, 5000K
Available Wattages. 100W, 150W, 200W, 250W, 300W, 400W, 500W, 600W, 700W, 800W, 900W
Color Rendering Index (4000K)>70
Color Rendering Index (5000K)>90

LUMINOUS OUTPUT & DIMENSIONS

Wattage	Output	Length
100 Watts	14,400 lumens	18 inches
150 Watts	21,600 lumens	26 inches
200 Watts	28,800 lumens	34 inches
250 Watts	36,000 lumens	42 inches
300 Watts	43,200 lumens	50 inches
400 Watts	57,600 lumens	66 inches
500 Watts	72,000 lumens	82 inches
600 Watts	86,400 lumens	98 inches
700 Watts	100,800 lumens	114 inches
800 Watts	115,200 lumens	130 inches
900 Watts	129,600 lumens	146 inches



fig 1.1



fig 1.2



fig 1.3

*All Motion sensor purchases come as a set, including a motion sensor and an L7 Wattstopper lens.



ORDERING INFORMATION

SAMPLE ORDER NUMBER: NCO-3-100-40-1-6-1-1-1-X-X-1

SERIES	WATTAGE	KELVIN	OPTICS	LENS	FINISH	DRIVER VOLTAGE	REMOTE CABLE	MOTION SENSOR	BATTERY BACKUP	DLC
NCO-3 High Temp	100- (100W)	40- (4000K)	1- No Optics	6- Flat tempered glass clear	1- Black	1- 120/277V	1- 3'	X- No	X- No	1- Standard
	150- (150W)	50- (5000K)	2- 60°			4- 347/480V	2- 10'	1- Standard*	1- Yes	2- Premium
	200- (200W)		4- Aisle				3- 25'	2- Internet of Things*		
	250- (250W)						4- 50'			
	300- (300W)						5- 100'			
	400- (400W)						6- 150'			
	500- (500W)						7- 200'			
	600- (600W)						8- 250'			
	700- (700W)									
	800- (800W)									
	900- (900W)									

* Motion Sensor information: Standard (1) features sensors by Wattstopper with L7 lens. Internet of Things or IOT, (2) features sensors by Enlighted Sensors
** Fixture includes a 6 foot Plug N Play Whip - see Power Cord ordering information on page 10 for additional options.

Turret Series LED - High Temperature

185° F

90 CRI



FEATURES

- > Patent-pending remote driver minimizes fixture operating temperature and allows fixture to evolve with changing plant floor demands with no re-gridding required
- > Inventronics Drivers with less than 1% failure rate
- > Dimmable 0-10V
- > In-series transient voltage surge suppressor (TVSS) protects fixture against failure due to dirty power and power supply surges
- > Up to 185°F (85°C)
- > Optional motion sensor. Choose from standard by Wattstopper with L7 lens (fig 1.1 & fig 1.2*), or Internet of Things (IOT) by Enlighted Sensors (fig 1.3).
- > UL 1598 listed
- > IP65 rated

SPECIFICATIONS

Power Factor.....>0.9
Input Voltage 120/277V & 347/480V
Performance.....Up to 163 lm/W
Operational Temperature..... -40° to 185°F (-40°C to 85°C)
Distribution..... 120°
Mount Type..... Suspension
Available Wattages..... 100W, 150W, 200W, 250W, 300W
Kelvin Temperature 4000K, 5000K
Color Rendering Index (4000K)>70
Color Rendering Index (5000K)>90

LUMINOUS OUTPUT

Wattage	Output
100 Watts	13,940 lumens
150 Watts	22,180 lumens
200 Watts	32,730 lumens
250 Watts	39,910 lumens
300 Watts	49,550 lumens



fig 1.1



fig 1.2



fig 1.3

*All Motion sensor purchases come as a set, including a motion sensor and an L7 Wattstopper lens.



ORDERING INFORMATION

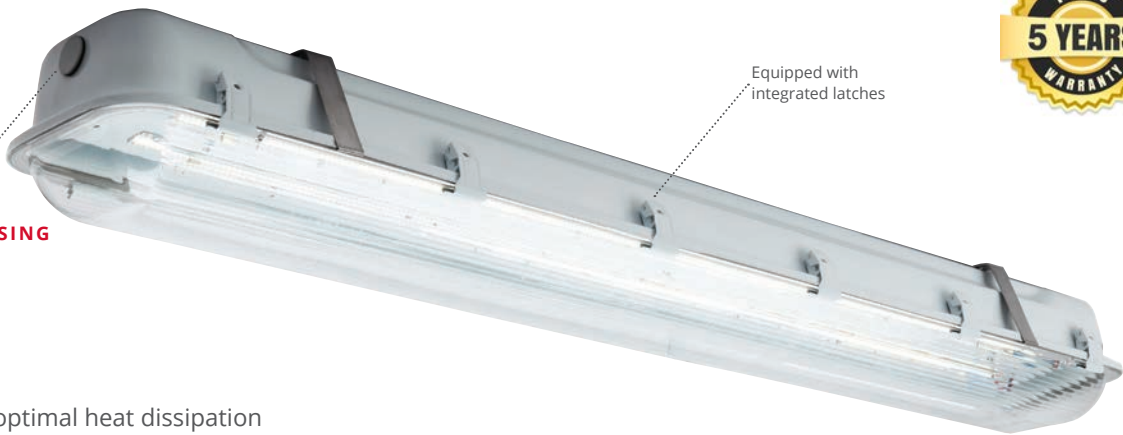
SAMPLE ORDER NUMBER: TUR-5-100-40-1-6-1-1-X-X-1

SERIES	WATTAGE	KELVIN	OPTICS	LENS	FINISH	DRIVER VOLTAGE	REMOTE CABLE	MOTION SENSOR	BATTERY BACKUP	DLC
TUR-5 High Temp	100- (100W)	40- (4000K)	1- No	6- Flat tempered glass clear	1- Black	1- 120-/77V	1- 3'	X- No	X- No	1- Standard
	150- (150W)	50- (5000K)				4- 347/480V	2- 10'	1- Standard*	1- Yes	2- Premium
	200- (200W)						3- 25'	2- Internet of Things*		
	250- (250W)						4- 50'			
	300- (300W)						5-100'			
							6- 150'			
							7- 200'			
							8- 250'			

* Motion Sensor information: Standard (1) features sensors by Wattstopper with L7 lens. Internet of Things or IOT, (2) features sensors by Enlighted Sensors
** Fixture includes a 6 foot Plug N Play Whip - see Power Cord ordering information on page 10 for additional options.

Stainless Steel Garrison Series LED

145° F



STAINLESS STEEL HOUSING

Equipped with integrated latches

FEATURES

- > Stainless housing for optimal heat dissipation
- > Suspend or surface mount the fixture
- > In-series transient voltage surge suppressor (TVSS) protects fixture against failure due to dirty power and power supply surges
- > Featuring American made Thomas Research driver
- > Optional motion sensor. Choose from standard by Wattstopper with L7 lens (fig 1.1 & 1.2*), or Internet of Things (IOT) by Enlighted Sensors (fig 1.3).
- > UL 1598 listed
- > IP65 rated

SPECIFICATIONS

Input Voltage120/277V
Performance.....Up to 144 lm/W
Operational Temperature..... -40°F to 145°F (-40°C to 63°C)
Distribution..... 120°
Mount Type.....Suspended or Surface Mounted
Available Wattages..... 50W, 75W, 100W, 125W
Kelvin Temperature 4000K, 5000K
Dimensions..... L51.8" x W7.5" x H4.4"
Color Rendering Index>70

LUMINOUS OUTPUT

Wattage	Output
50 Watts	7,200 lumens
75 Watts	10,800 lumens
100 Watts	14,400 lumens
125 Watts	18,000 lumens



fig 1.1



fig 1.2



fig 1.3

*All Motion sensor purchases come as a set, including a motion sensor and an L7 Wattstopper lens.



ORDERING INFORMATION

SAMPLE ORDER NUMBER: GAR-7-X50-40-1-3-2-1-1-X-X-1

SERIES	WATTAGE	KELVIN	OPTICS	LENS	FINISH	DRIVER VOLTAGE	REMOTE CABLE	MOTION SENSOR	BATTERY BACKUP	CORD
GAR-7	X50- (50W)	40- (4000K)	1- No Optics	3- Drop Poly Frosted	2- Stainless	1- 120-277V	1- N/A	X- No	X- No	1- 125V, 15amp, SB, 6ft
	X75- (75W)	50- (5000K)		6- Flat tempered glass clear				1- Standard*	1- Yes	3- 125V, 15amp, TL, 6ft
	100- (100W)							2- Internet of Things*		9- 277V, 15amp, TL, 6ft
	125- (125W)									D- 300V, Whip, 6ft

* Motion Sensor part information: Standard (1) features sensors by Wattstopper with L7 Lens. Internet of Things (2) features sensors by Enlighted Sensors
** Fixture Includes a 6 foot Hardwired Cord- see Power Cord ordering information on page 10 for additional options.

STANDARD TEMPERATURE

Interior Lighting
pg 20-23

Citadel Series LED - Standard Temperature

130° F

90 CRI



FEATURES

- > Up to 130°F (55°C)
- > Inventronics Drivers with less than 1% failure rate
- > Patent-pending design extends fixture life by helping prevent build-up of insulating dust and debris
- > Patent-pending remote driver minimizes fixture operating temperature without re-gridding required
- > Patent-pending LED board design eliminates illumination dead spots
- > Dimmable 0-10V
- > In-series transient voltage surge suppressor (TVSS) protects fixture against failure due to power supply surges
- > Optional motion sensor. Choose from standard by Wattstopper with L7 lens (fig 1.1 & 1.2*), or Internet of Things (IOT) by Enlighted Sensors (fig 1.3).
- > UL 1598 listed
- > IP65 rated

SPECIFICATIONS

Power Factor.....>0.9
Input Voltage 120/277V & 347/480V
Performance.....Up to 160 lm/W
Operational Temperature..... -40°F to 130°F (-40°C to 55°C)
Distribution..... 120°, 60° & Aisle
Mount Type.....Suspension
Kelvin Temperature 4000K, 5000K
Available Wattages..... 100W, 150W, 200W, 250W, 300W, 400W, 500W, 600W, 700W, 800W, 900W
Color Rendering Index (4000K)>70
Color Rendering Index (5000K)>90

LUMINOUS OUTPUT & DIMENSIONS

Wattage	Output	Length
100 Watts	14,400 lumens	18 inches
150 Watts	21,600 lumens	26 inches
200 Watts	28,800 lumens	34 inches
250 Watts	36,000 lumens	42 inches
300 Watts	43,200 lumens	50 inches
400 Watts	57,600 lumens	66 inches
500 Watts	72,000 lumens	82 inches
600 Watts	86,400 lumens	98 inches
700 Watts	100,800 lumens	114 inches
800 Watts	115,200 lumens	130 inches
900 Watts	129,600 lumens	146 inches



fig 1.1



fig 1.2



fig 1.3



*All Motion sensor purchases come as a set, including a motion sensor and an L7 Wattstopper lens.

ORDERING INFORMATION

SAMPLE ORDER NUMBER: CIT-2-100-40-1-2-1-1-1-X-X-1

SERIES	WATTAGE	KELVIN	OPTICS	LENS	FINISH	DRIVER VOLTAGE	REMOTE CABLE	MOTION SENSOR	BATTERY BACKUP	DLC
CIT-2 Std Temp	100- (100W)	40- (4000K)	1- No Optics	2- Flat Poly Clear	1- Black	1- 120/277V	1- 3'	X- No	X- No	1- Standard
	150- (150W)	50- (5000K)	2- 60°	6- Flat tempered glass clear		4- 347/480V	2- 10'	1- Standard*	1- Yes	2- Premium
	200- (200W)		4- Aisle				3- 25'	2- Internet of Things*		
	250- (250W)						4- 50'			
	300- (300W)						5- 100'			
	400- (400W)						6- 150'			
	500- (500W)						7- 200'			
	600- (600W)						8- 250'			
	700- (700W)									
	800- (800W)									
	900- (900W)									

* Motion Sensor part information: Standard (1) features sensors by Wattstopper with L7 Lens. Internet of Things (2) features sensors by Enlighted Sensors
** Fixture includes a 6 foot Plug N Play Whip - see Power Cord ordering information on page 10 for additional options

NCO Series LED - Standard Temperature

130° F
90 CRI



- FEATURES
- > Up to 130°F (55°C)
 - > Inventronics Drivers with less than 1% failure rate
 - > Patent-pending design extends fixture life by helping prevent build-up of insulating dust and debris
 - > Patent-pending remote driver minimizes fixture operating temperature without re-gridding required
 - > Patent-pending LED board design eliminates illumination dead spots
 - > Dimmable 0-10V
 - > In-series transient voltage surge suppressor (TVSS) protects fixture against failure due to power supply surges
 - > Optional motion sensor.Choose from standard by Wattstopper with L7 lens (fig 1.1 & 1.2*), or Internet of Things (IOT) by Enlighted Sensors (fig 1.3).
 - > UL 1598 listed
 - > IP65 rated

LUMINOUS OUTPUT & DIMENSIONS

Wattage	Output	Length
100 Watts	14,400 lumens	18 inches
150 Watts	21,600 lumens	26 inches
200 Watts	28,800 lumens	34 inches
250 Watts	36,000 lumens	42 inches
300 Watts	43,200 lumens	50 inches
400 Watts	57,600 lumens	66 inches
500 Watts	72,000 lumens	82 inches
600 Watts	86,400 lumens	98 inches
700 Watts	100,800 lumens	114 inches
800 Watts	115,200 lumens	130 inches
900 Watts	129,600 lumens	146 inches



fig 1.1



fig 1.2



fig 1.3

*All Motion sensor purchases come as a set, including a motion sensor and an L7 Wattstopper lens.



SPECIFICATIONS

Power Factor.....>0.9
Input Voltage 120/277V & 347/480V
Performance.....Up to 151 lm/W
Operational Temperature..... -40°F to 130°F (-40°C to 55°C)
Distribution..... 120°, 60° & Aisle
Mount Type.....Suspension
Kelvin Temperature 4000K, 5000K
Available Wattages. 100W, 150W, 200W, 250W, 300W, 400W
500W, 600W, 700W, 800W, 900W
Color Rendering Index (4000K)>70
Color Rendering Index (5000K)>90

ORDERING INFORMATION

SAMPLE ORDER NUMBER: NCO-4-100-40-1-2-1-1-1-X-X-1

SERIES	WATTAGE	KELVIN	OPTICS	LENS	FINISH	DRIVER VOLTAGE	REMOTE CABLE	MOTION SENSOR	BATTERY BACKUP	DLC
NCO-4 Std Temp	100- (100W)	40- (4000K)	1- No Optics	2- Flat Poly Clear	1- Black	1- 120/277V	1- 3'	X- No	X- No	1- Standard
	150- (150W)	50- (5000K)	2- 60°	6- Flat tempered glass clear		4- 347/480V	2- 10'	1- Standard*	1- Yes	2- Premium
	200- (200W)		4- Aisle				3- 25'	2- Internet of Things*		
	250- (250W)						4- 50'			
	300- (300W)						5- 100'			
	400- (400W)						6- 150'			
	500- (500W)						7- 200'			
	600- (600W)						8- 250'			
	700- (700W)									
	800- (800W)									
	900- (900W)									

* Motion Sensor information: Standard (1) features sensors by Wattstopper with L7 lens. Internet of Things or IOT, (2) features sensors by Enlighted Sensors
** Fixture includes a 6 foot Plug N Play Whip - see Power Cord ordering information on page 10 for additional options.

Turret Series LED - Standard Temperature

125° F
90 CRI



- FEATURES
- > Up to 125°F (52°C)
 - > Patent-pending remote driver minimizes fixture operating temperature and allows fixture to evolve with changing plant floor demands with no re-gridding required
 - > Inventronics Drivers with less than 1% failure rate
 - > Dimmable 0-10V
 - > In-series transient voltage surge suppressor (TVSS) protects fixture against failure due to dirty power and power supply surges
 - > Optional motion sensor. Choose from standard by Wattstopper with L7 lens (fig 1.1 & fig 1.2*), or Internet of Things (IOT) by Enlighted Sensors (fig 1.3).
 - > UL 1598 listed
 - > IP65 rated

LUMINOUS OUTPUT

Wattage	Output
100 Watts	14,400 lumens
150 Watts	21,600 lumens
200 Watts	28,800 lumens
250 Watts	36,000 lumens
300 Watts	43,200 lumens



fig 1.1



fig 1.2



fig 1.3

*All Motion sensor purchases come as a set, including a motion sensor and an L7 Wattstopper lens.



SPECIFICATIONS

Power Factor.....>0.9
Input Voltage 120/277V & 347/480V
Performance.....Up to 163 lm/W
Operational Temperature..... -40° to 125°F (-40°C to 52°C)
Distribution..... 120°
Mount Type..... Suspension
Available Wattages..... 100W, 150W, 200W, 250W, 300W
Kelvin Temperature 4000K, 5000K
Color Rendering Index (4000K)>70
Color Rendering Index (5000K)>90

ORDERING INFORMATION

SAMPLE ORDER NUMBER: TUR-6-100-40-1-2-1-1-1-X-X-1

SERIES	WATTAGE	KELVIN	OPTICS	LENS	FINISH	DRIVER VOLTAGE	REMOTE CABLE	MOTION SENSOR	BATTERY BACKUP	DLC
TUR-6 Std Temp	100- (100W)	40- (4000K)	1- No	2- Flat Poly Clear	1- Black	1- 120-/77V	1- 3'	X- No	X- No	1- Standard
	150- (150W)	50- (5000K)		6- Flat tempered glass clear		4- 347/480V	2- 10'	1- Standard*	1- Yes	2- Premium
	200- (200W)						3- 25'	2- Internet of Things*		
	250- (250W)						4- 50'			
	300- (300W)						5-100'			
							6- 150'			
							7- 200'			
							8- 250'			

* Motion Sensor information: Standard (1) features sensors by Wattstopper with L7 lens. Internet of Things or IOT, (2) features sensors by Enlighted Sensors
** Fixture includes a 6 foot Plug N Play Whip - see Power Cord ordering information on page 10 for additional options.

Linear High Bay



- FEATURES**
- > Lightweight aluminum frame
 - > Dimmable
 - > Options available with normal lead times: Integrated occupancy sensor, Plug and Play cord
 - > Clear polycarbonate lens
 - > Hanging cables included
 - > IP20 rated for indoor use
 - > UL1598 Listed
 - > Infrared motion sensor

SPECIFICATIONS

Input Voltage120/277V
Performance.....Up to 130 lm/W
Calculated Lifetime 155,000 hours
Operational Temperature.....-4°F to 122°F (-20°C to 50°C)
Distribution..... 110°
Mount Type..... Suspension, Surface Mount
Available Wattages..... 100W, 165W, 210W, 300W
Available Kelvin Temperatures..... 4000K, 5000K
Available Lengths2 ft, 4 ft

LUMINOUS OUTPUT

Wattage	4000K	5000K
100W	12,355 lm	12,710 lm
165W	20,917 lm	21,488 lm
210W	25,673 lm	26,299 lm
300W	38,572 lm	39,627 lm



ACCESSORIES






Product Accessories	Part Number
Stainless Steel Suspension Cables - 5 Ft	EPM-SC-05
Stainless Steel Suspension Cables - 10 Ft	EPM-SC-10
Stainless Steel 1/4" Thimble for Suspension Cable	EPM-SC-TH-14-SS
Stainless Steel 3/8" Carabiner for Suspension Cable	EPM-SC-SH-38-SS
Linear High Bay LED Battery Backup	EPM-LL-BB
Wireless Motion Sensor Remote Control	EPM-HA-MS-R

ORDERING INFORMATION




SERIES	PRODUCT	LENGTH	WATTAGE	KELVIN	PREMIUM	INPUT VOLTAGE	FIXTURE DISCONNECT	MOTION SENSOR	LENS
EPM - ePOWER Manufacturing	LHB - Linear High Bay LED	12 - 1 Ft x 2 Ft	100 - 100W	40 - 4000K 50 - 5000K	PR - Premium	1 - 120/277V	PP - Plug-and- Play HW - Factory Installed Hardwire Cord	(Blank) - No Motion Sensor MS - with Motion Sensor w/ lens	C – Clear
		22 - 2 Ft x 2 Ft	165 - 165W						
		14 - 1 Ft x 4 Ft	210 - 210W						
		24 - 2Ft x 4 Ft	300 - 300W						
EPM	LHB				PR	1			C

* Fixture includes a 6 foot Plug N Play whip - see Power Cord ordering information on page 10 for additional options.

Sample Product Comparison- Std Temperature

					
	Tactik Lighting Turret	Tactik Lighting Citadel	Tactik Lighting NCO	KBL Series	Lithonia
In-series Transient Voltage Surge Suppressor (TVSS) to protect from dirty power including spikes, transients and lightning	✓	✓	✓	✗	✗
Programmable driver allows for precise light output	✓	✓	✓	✗	✗
Standardized Driver - eliminates multiple SKUs - same driver, multiple fixtures - NCO, Citadel, Turret	✓	✓	✓	✗	✗
Fast 1 week lead times	✓	✓	✓	✗	✗
IOT integrates lighting into other building systems	✓	✓	✓	✗	✗
Operational Temperature	up to 125°F (52°C)	up to 130°F (55°C)	up to 130°F (55°C)	up to 122°F (50°C)	up to 113°F (45°C)
Warranty	10 year warranty	10 year warranty	10 year warranty	5 year warranty	5 year warranty
Performance	163 lumens/watt	160 lumens/watt	151 lumens/watt	153 lumens/watt	136 lumens/watt
Driver	Remote or Integrated	Remote or Integrated	Remote or Integrated	Integrated Only	Integrated Only
Kelvin Temps Available	4000K, 5000K	4000K, 5000K	4000K, 5000K	3000K, 4000K, 5000K	4000K, 5000K
Distribution	120° Only	60°, 120°, Aisle	60°, 120°, Aisle	120° Reflectors	120° Only
Lenses	Flat Poly Clear & Flat Tempered Glass	Flat Poly Clear & Flat Tempered Glass	Flat Poly Clear & Flat Tempered Glass	Tempered Glasss	No Lens or Acrylic
Light Output (Lumens) - Higher is better	14,400 - 49,550	13,220 - 129,600	12,960 - 129,600	9,000 - 30,000	12,000 - 30,000
CRI - Higher is better	5000K - 90 CRI 4000K - 70 CRI	5000K - 90 CRI 4000K - 70 CRI	5000K - 90 CRI 4000K - 70 CRI	70 or 80 CRI	Minimum 80 CRI
Wattages available	100W - 300W	100W - 900W	100W - 900W	155W or 233W	81W - 215W
IP Rating	IP65	IP65	IP65	IP65	Damp Location Listed
Options	Plug & Play power cord; Motion Sensor; Mounting options; Battery Backup; Remote Driver up to 250 feet	Plug & Play power cord; Motion Sensor; Mounting options; Battery Backup; Remote Driver up to 250 feet	Plug & Play power cord; Motion Sensor; Mounting options; Battery Backup; Remote Driver up to 250 feet	Mounting Options including J-Box, Pendant, or Hook & Cord	Hardwire Cord; Motion Control Sensor

Sample Product Comparison- High Temperature

			
	Tactik Lighting Turret	Tactik Lighting Citadel	Tactik Lighting NCO
In-series Transient Voltage Surge Suppressor (TVSS) to protect from dirty power including spikes, transients and lightning	✓	✓	✓
Thermistor - LED's are protected from premature light depreciation due to overheating	✓	✓	✓
Programmable driver allows for precise light output	✓	✓	✓
Standardized Driver - eliminates multiple SKUs - same driver, multiple fixtures - NCO, Citadel, Turret	✓	✓	✓
Fast 1 week lead times	✓	✓	✓
IOT integrates lighting into other building systems	✓	✓	✓
Made in USA - Sheboygan, WI	✓	✓	✓
50%Operational Temperature	185°F (80°C)	195°F (90°C)	195°F (90°C)
Warranty	10 year warranty	10 year warranty	10 year warranty
Performance	163 lumens/watt	160 lumens/watt	151 lumens/watt
Driver	Remote or Integrated	Remote or Integrated	Remote or Integrated
Kelvin Temps Available	4000K, 5000K	4000K, 5000K	4000K, 5000K
Distribution	120°	60°, 120°, Aisle	60°, 120°, Aisle
Lenses	Flat Poly Clear & Flat Tempered Glass	Flat Poly Clear & Flat Tempered Glass	Flat Poly Clear & Flat Tempered Glass
Light Output (Lumens) - Higher is better	13,940 - 49,550	13,220 - 126,000	12,960 - 123,300
CRI - Higher is better	4000K - 70 CRI 5000K - 90 CRI	4000K - 70 CRI 5000K - 90 CRI	4000K - 70 CRI 5000K - 90 CRI
Wattages available	100W - 300W	100W - 900W	100W - 900W
IP Rating	IP65	IP65	IP65
Options	Plug & Play power cord; Motion Sensor; Mounting options; Battery Backup; Remote Driver up to 250 feet	Plug & Play power cord; Motion Sensor; Mounting options; Battery Backup; Remote Driver up to 250 feet	Plug & Play power cord; Motion Sensor; Mounting options; Battery Backup; Remote Driver up to 250 feet
Dimmable 0-10V	✓	✓	✓

			
Dialight Vigilant LED	Holophane Phuzion LED	MaxLite	Hubbel HBLHA Series
✗	✗	✗	✗
✗	✗	✗	✗
✗	✗	✗	✗
✗	✗	✗	✗
✗	✗	✗	✗
✗	✗	✗	✗
✗	✗	✗	✗
149°F (65°C)	175°F (70°C)	140°F (60°C) <16hrs.	149°F (65°C) @ 50% Light Output
10 year warranty	5 year warranty	5 year warranty	5 year warranty
145 lumens/watt	119 lumens/watt	130 lumens/watt	100 lumens/watt
Integrated Only	Remote or Integrated	Integrated Only	Integrated Only
2700K, 4000K, 5000K	3000K, 3500K, 4000K, 5000K	4000K, 5000K	4000K, 5000K
Oval, Medium, Narrow, Wide	Narrow, Medium, Wide, or Focus	120°	Aisle, Narrow, Wide
Glass	Frosted or Acrylic	Clear	Polycarbonate
10,250 - 26,250	12,000 - 60,000	31,200	10,213 - 16,808
Minimum 80 CRI	70, 80, 90 CRI	80 CRI	68 CRI
80W, 102W, 129W, 186W	81W, 130W, 170W, 218W, 254W, 288W, 323W, 374W, 437W	240W	112W, 139W, 169W
IP66	IP64	IP66	IP65
Occupancy Sensor; Mounting Options	Dimming Sensors; Mounting Options; Wire guard; Battery Backup	Hardwire	Hardwire
✗	✗	✓	✗



BACKED WITH CONFIDENCE. INSTALLED BY YOU.



PRODUCTS MADE IN AMERICA

- > First industrial lighting manufacturer to offer America-made products
- > Shortens lead times
- > Get American quality not foreign tariffs



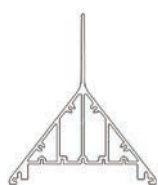
REFURBISHMENT PROGRAM

- > Lowest life cycle cost
- > Low LED & driver running temperatures
- > Rugged military-grade design
- > Quality materials, components and construction

195° F

HIGHER HEAT RATINGS

- > Fixtures rated up to 195°F
- > Up to a 30% increase compared to leading competitors
- > Unlike competitors, there's no fall-off in lumen output as heat limit is approached



PATENT PENDING DESIGNS

- > Set new standards for cooling efficiency over the life of the fixture
- > Innovative, vertical exterior cooling fin dissipates heat while preventing dust and debris build-up
- > Internal cooling fins provide additional protection against dust and debris

WattStopper
legrand

enlightened
A Siemens Company

THE TACTIK ADVANTAGE

At Tactik Lighting,
we do things differently.

Our team has decades
of experience helping
hundreds of clients.

We've seen what doesn't work
and we refuse to do it that way.

Our standards are set high
only to deliver the very best
products to our clients.



3115 N 21st Street,
Suite 2, Sheboygan, WI 53083
920-287-3840
sales@tactik.com

tactiklighting.com

