

# NCO Series LED

## Extreme Reliability for General Environments

### Easy installation

Plug and play  
waterproof cord  
connectors

### USA ingenuity

Dual purpose cooling and hanging fin

### Fast lead times

Scalable design  
up to 900 Watts

### Better designed projects

Optics 60° - 90° - 120° - Aisles

**INNOVATIVE,  
PATENT-PENDING DESIGN**  
redefines LED reliability for  
general purpose industrial environments.

When the top brass needs a job done, they rely on non-commissioned officers (NCOs). Our NCO Series delivers that same no-nonsense work ethic when it comes to military-grade LED lighting. No complaints. No Surprises. No excuses. Just a commitment to exceeding expectations. That's why the NCO is destined to be the backbone of mission-critical objectives across the country.



### American-Made Tough & Reliable

We understand that failure is not an option. Our fixtures are uniquely designed and built Military-Grade tough, so they stand up to almost anything without complaint.



### Keep Your cool with Remote Drivers

Tactik features remote drivers to prevent unwanted heat build-up. Helps extend fixture life and offers added flexibility to adjust to plant floor plans – without costly re-gridding.



### 4 Week Lead Time

Our innovative modular design and advanced manufacturing capabilities allow us to ship all orders, even customizations, in 4 weeks.





# NCO Series LED

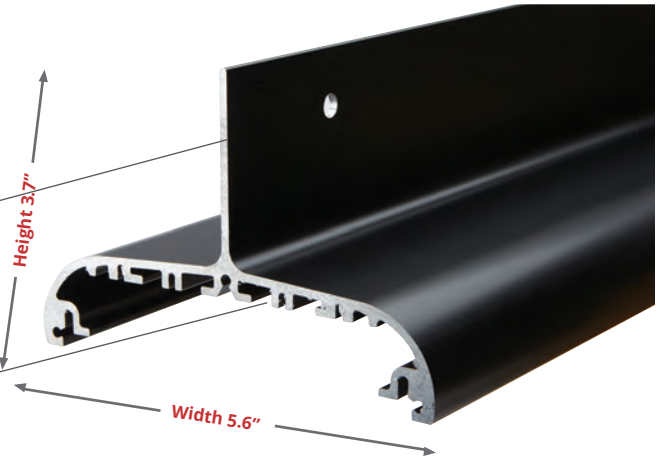
Filled with Bright Ideas for  
Improving Lighting Reliability

## DISSIPATE HEAT MORE EFFICIENTLY

The NCO Series' unique design helps reduce unwanted heat build-up two different ways.

1. Patent-pending vertical exterior heat transfer cooling fin dissipates heat

2. Internal heat transfer cooling fins prevent buildup of dust and debris that can hinder cooling



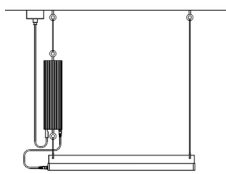
## ENHANCE COOLING AND ELIMINATE RE-GRIDDING HEADACHES

With leading competitive units, the LED driver is inside the light, which results in a lot of heat. However, the NCO Series features remotely mounted drivers.

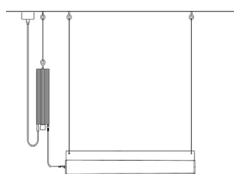
This approach helps keep the operating temperatures inside the fixture lower. It also allows more effective cooling of the driver, safeguarding

the integrity of the driver as well as the LED light itself.

Should changes in plant floor layout dictate the need to alter fixture placement, this can be accomplished quickly and easily without re-gridding hassles. Simply change out the power cord for one of suitable length to reach the new location of the light.



Minimum Footprint



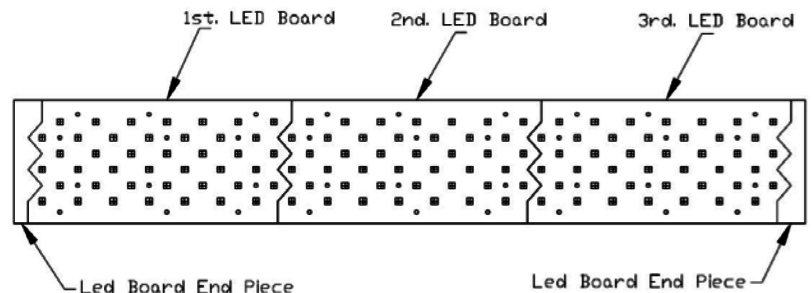
Driver Adjacent



Extend As Needed

## MORE UNIFORM LIGHTING EFFICIENTLY CONFIGURED TO YOUR NEEDS

Patent-pending shark tooth design enables LED boards to be configured for any of 11 models, ranging from 100-900 Watts. Resulting array provides uniform light distribution with no dead spots.



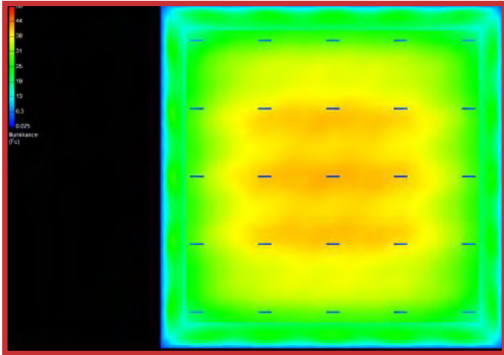
# NCO Series LED

Filled with Bright Ideas for  
Improving Lighting Reliability

## Optics Information

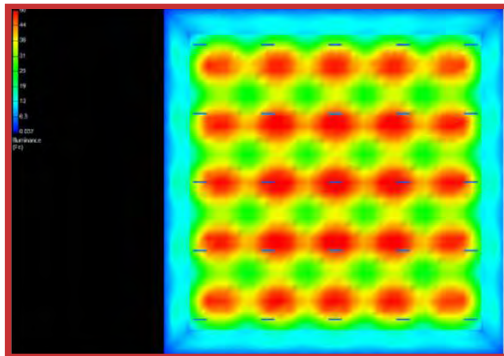
### NO OPTICS

- > Great for general illumination. No Optics are also great if you want to maximize horizontal light & to achieve uniform lighting overall. Ideal for 30 feet and below.



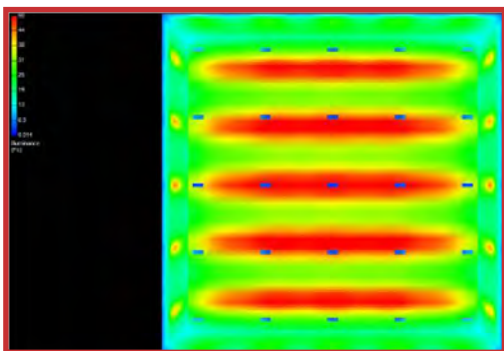
### 60 DEGREE OPTICS

- > Great for higher ceilings. Best used for fixtures mounted 30+ feet up. (This image captures a 25 foot mounting height).



### AISLE OPTICS

- > Great for racking. With Aisle Optics, light is not wasted in adjoining aisles. This means you can reduce the number of fixtures in your facility, or can substantially reduce wattage when switching from HID or Fluorescents to LED.





# NCO Series LED

## High Temperature Specifications

### SPECIFICATIONS

Power Factor.....	>0.9
Input Voltage .....	120/277V & 347/480V
Performance.....	Up to 151 lm/W
Operational Temperature.....	-40°F to 195°F (-40°C to 90°C)
Distribution.....	120°, 60° & Aisle
Mount Type.....	Suspension
Kelvin Temperature .....	4000K, 5000K
Available Wattages....	100W, 150W, 200W, 250W, 300W, 400W 500W, 600W, 700W, 800W, 900W
Color Rendering Index (4000K) .....	>70
Color Rendering Index (5000K) .....	>90

### FEATURES

- > Up to 195°F (90°C)
- > Inventronics Drivers with less than 1% failure rate
- > Patent-pending design extends fixture life by helping prevent build-up of insulating dust and debris and eliminates illumination dead spots
- > Patent-pending remote driver minimizes fixture operating temperature without re-gridding required
- > Includes 10 Year Module Warranty
- > Dimmable 0-10V
- > In-series transient voltage surge suppressor (TVSS) protects fixture against failure due to power supply surges
- > Optional motion sensor. Choose from standard by Wattstopper with L7 lens (fig 1.1 & 1.2\*), or Internet of Things (IOT) by Enlighted Sensors (fig 1.3).
- > UL 1598 listed
- > IP65 rated



### LUMINOUS OUTPUT & DIMENSIONS

WATTAGE	LUMENS	LENGTH
100 Watts	12,960 lumens	18 inches
150 Watts	21,600 lumens	26 inches
200 Watts	31,070 lumens	34 inches
250 Watts	36,000 lumens	42 inches
300 Watts	44,020 lumens	50 inches
400 Watts	57,600 lumens	66 inches
500 Watts	72,000 lumens	82 inches
600 Watts	86,400 lumens	98 inches
700 Watts	100,800 lumens	114 inches
800 Watts	115,200 lumens	130 inches
900 Watts	123,300 lumens	146 inches

### POWER CORD

DESCRIPTION	PRODUCT NUMBER
125V, 15 amp, Straight Blade, 6 ft	PC-PP-125-15-SB-6
125V, 15 amp, Straight Blade, 12 ft	PC-PP-125-15-SB-12
125V, 15 amp, Twist Lock, 6 ft	PC-PP-125-15-TL-6
125V, 15 amp, Twist Lock, 12 ft	PC-PP-125-15-TL-12
125V, 20 amp, Twist Lock, 6 ft	PC-PP-125-20-TL-6
125V, 20 amp, Twist Lock, 12 ft	PC-PP-125-20-TL-12
250V, 20 amp, Twist Lock, 6 ft	PC-PP-250-20-TL-6
250V, 20 amp, Twist Lock, 12 ft	PC-PP-250-20-TL-12
277V, 15 amp, Twist Lock, 6 ft	PC-PP-277-15-TL-6
277V, 15 amp, Twist Lock, 12 ft	PC-PP-277-15-TL-12
277V, 20 amp, Twist Lock, 6 ft	PC-PP-277-20-TL-6
277V, 20 amp, Twist Lock, 12 ft	PC-PP-277-20-TL-12
480V, 20 amp, Twist Lock, 6 ft	PC-PP-480-20-TL-6
480V, 20 amp, Twist Lock, 12 ft	PC-PP-480-20-TL-12
600V, 20 amp, Twist Lock, 6 ft	PC-PP-600-20-TL-6
600V, 20 amp, Twist Lock, 12 ft	PC-PP-600-20-TL-12
600V, Whip, 12ft	PC-PP-600-W-12

\*All Motion sensor purchases come as a set, including a motion sensor and an L7 Wattstopper lens.

### NCO ORDERING INFORMATION

SAMPLE ORDER NUMBER: NCO-3-100-40-1-6-1-1-1-X-X-1

SERIES	WATTAGE	KELVIN	OPTICS	LENS	FINISH	DRIVER VOLTAGE	REMOTE CABLE	MOTION SENSOR	BATTERY BACKUP	DLC
NCO-3 High Temp	100- (100W)	40- (4000K)	1- No Optics	6- Flat tempered glass clear	1- Black	1- 120/277V	1- 3'	X- No	X- No	1- Standard
	150- (150W)	50- (5000K)	2- 60°			4- 347/480V	2- 10'	1- Standard*	1- Yes	2- Premium
	200- (200W)		4- Aisle				3- 25'	2- IOT*		
	250- (250W)						4- 50'			
	300- (300W)						5- 100'			
	400- (400W)						6- 150'			
	500- (500W)						7- 200'			
	600- (600W)						8- 250'			
	700- (700W)						9- 500'			
	800- (800W)									
	900- (900W)									

\* Motion Sensor information: Standard (1) features sensors by Wattstopper with L7 lens. Internet of Things or IOT, (2) features sensors by Enlighted Sensors

\*\* Fixture includes a 6 foot Whip Plug N Play Cord. For additional cord options, please see the Power Cord Table referenced above for ordering information.

3115 N 21<sup>st</sup> Street, Suite 2, Sheboygan, WI 53083  
920-287-3840

tactiklighting.com







# NCO Series LED

## Standard Temperature Specifications

### SPECIFICATIONS

Power Factor.....	>0.9
Input Voltage .....	120/277V & 347/480V
Performance.....	Up to 151 lm/W
Operational Temperature.....	-40°F to 130°F (-40°C to 55°C)
Distribution.....	120°, 60° & Aisle
Mount Type.....	Suspension
Kelvin Temperature .....	4000K, 5000K
Available Wattages....	100W, 150W, 200W, 250W, 300W, 400W 500W, 600W, 700W, 800W, 900W
Color Rendering Index (4000K) .....	>70
Color Rendering Index (5000K) .....	>90

### FEATURES

- > Up to 130°F (55°C)
- > Inventronics Drivers with less than 1% failure rate
- > Patent-pending design extends fixture life by helping prevent build-up of insulating dust and debris and eliminates illumination dead spots
- > Patent-pending remote driver minimizes fixture operating temperature without re-gridding required
- > Includes 10 Year Module Warranty
- > Dimmable 0-10V
- > In-series transient voltage surge suppressor (TVSS) protects fixture against failure due to power supply surges
- > Optional motion sensor. Choose from standard by Wattstopper with L7 lens (fig 1.1 & 1.2\*), or Internet of Things (IOT) by Enlighted Sensors (fig 1.3).
- > UL 1598 listed
- > IP65 rated



### LUMINOUS OUTPUT & DIMENSIONS

WATTAGE	LUMENS	LENGTH
100 Watts	12,960 lumens	18 inches
150 Watts	21,600 lumens	18 inches
200 Watts	31,070 lumens	26 inches
250 Watts	36,000 lumens	34 inches
300 Watts	44,020 lumens	34 inches
400 Watts	57,600 lumens	50 inches
500 Watts	72,000 lumens	58 inches
600 Watts	86,400 lumens	66 inches
700 Watts	100,800 lumens	82 inches
800 Watts	115,200 lumens	90 inches
900 Watts	129,600 lumens	98 inches

### POWER CORD

DESCRIPTION	PRODUCT NUMBER
125V, 15 amp, Straight Blade, 6 ft	PC-PP-125-15-SB-6
125V, 15 amp, Straight Blade, 12 ft	PC-PP-125-15-SB-12
125V, 15 amp, Twist Lock, 6 ft	PC-PP-125-15-TL-6
125V, 15 amp, Twist Lock, 12 ft	PC-PP-125-15-TL-12
125V, 20 amp, Twist Lock, 6 ft	PC-PP-125-20-TL-6
125V, 20 amp, Twist Lock, 12 ft	PC-PP-125-20-TL-12
250V, 20 amp, Twist Lock, 6 ft	PC-PP-250-20-TL-6
250V, 20 amp, Twist Lock, 12 ft	PC-PP-250-20-TL-12
277V, 15 amp, Twist Lock, 6 ft	PC-PP-277-15-TL-6
277V, 15 amp, Twist Lock, 12 ft	PC-PP-277-15-TL-12
277V, 20 amp, Twist Lock, 6 ft	PC-PP-277-20-TL-6
277V, 20 amp, Twist Lock, 12 ft	PC-PP-277-20-TL-12
480V, 20 amp, Twist Lock, 6 ft	PC-PP-480-20-TL-6
480V, 20 amp, Twist Lock, 12 ft	PC-PP-480-20-TL-12
600V, 20 amp, Twist Lock, 6 ft	PC-PP-600-20-TL-6
600V, 20 amp, Twist Lock, 12 ft	PC-PP-600-20-TL-12
600V, Whip, 12ft	PC-PP-600-W-12

\*All Motion sensor purchases come as a set, including a motion sensor and an L7 Wattstopper lens.

### NCO ORDERING INFORMATION

SAMPLE ORDER NUMBER: NCO-4-100-40-1-2-1-1-1-X-X-1

SERIES	WATTAGE	KELVIN	OPTICS	LENS	FINISH	DRIVER VOLTAGE	REMOTE CABLE	MOTION SENSOR	BATTERY BACKUP	DLC
NCO-4 Std Temp	100- (100W)	40- (4000K)	1- No Optics	2- Flat Poly Clear	1- Black	1- 120/277V	1- 3'	X- No	X- No	1- Standard
	150- (150W)	50- (5000K)	2- 60°	6- Flat tempered glass clear		4- 347/480V	2- 10'	1- Standard*	1- Yes	2- Premium
	200- (200W)		4- Aisle				3- 25'	2- IOT*		
	250- (250W)						4- 50'			
	300- (300W)						5- 100'			
	400- (400W)						6- 150'			
	500- (500W)						7- 200"			
	600- (600W)						8- 250'			
	700- (700W)						9- 500'			
	800- (800W)									
	900- (900W)									

\* Motion Sensor information: Standard (1) features sensors by Wattstopper with L7 lens. Internet of Things or IOT, (2) features sensors by Enlighted Sensors

\*\* Fixture includes a 6 foot Whip Plug N Play Cord. For additional cord options, please see the Power Cord Table referenced above for ordering information.

3115 N 21<sup>st</sup> Street, Suite 2, Sheboygan, WI 53083  
920-287-3840

tactiklighting.com







## American Made & Measurably Better

### What's better than higher heat ratings in your LED lights? Higher heat ratings in the 1st AMERICAN MADE LED lights!

You heard right. Industrial/commercial LED lights proudly made in America. So, you see a 46% increase in high temperature ratings. You know what you won't see? The cost of foreign trade tariffs jacking up the price of the products you want.



### Tactik Labs is your added assurance of reliability.

Our LED lighting is designed to a higher standard. So is our validation process. At our in-house lab testing facility, our products undergo rigorous testing to provide you every assurance possible that all Tactik LED lighting will perform and last as promised. While others may talk about performance and reliability in harsh environments, Tactik Labs documents it.

### Backed with confidence.

We protect distributors and customers with a 10-year warranty standard for added peace of mind. Plus, service after the sale includes a proactive warranty process – replacement is shipped immediately if a problem is identified and defective product is returned in its original box.



3115 N 21<sup>st</sup> Street, Suite 2, Sheboygan, WI 53083  
920-287-3840 • sales@tactik.com

[tactiklighting.com](http://tactiklighting.com)

