

Citadel Series LED

for High Dust & Debris Environments

Dirty environment approved

Free from harmful dust and dirt buildups that prevent fixtures from staying cool

Easy installation

Plug and play waterproof cord connectors

Fast lead times

USA ingenuity

Dual purpose cooling and hanging fin

Scalable design

100 – 900 Watts

Better designed projects

Optics 60° – 90° – 120° – Aisles

**REVOLUTIONARY,
PATENT-PENDING DESIGN**
sets new performance standards for
extreme industrial environments.

Want the very best and brightest in military-grade LED lighting? Turn to the Citadel. This series looks like no other LED because it's designed like no other LED. As a result, it stands up to the most demanding high-heat, high-dust & debris environments like no other LED.



American-Made Tough & Reliable

We understand that failure is not an option. Our fixtures are uniquely designed and built Military-Grade tough, so they stand up to almost anything without complaint.



Keep Your cool with Remote Drivers

Tactik features remote drivers to prevent unwanted heat build-up. Helps extend fixture life and offers added flexibility to adjust to plant floor plans – without costly re-gridding.



4 Week Lead Time

Our innovative modular design and advanced manufacturing capabilities allow us to ship all orders, even customizations, in 4 weeks.



Citadel Series LED

One Brilliant Idea After Another

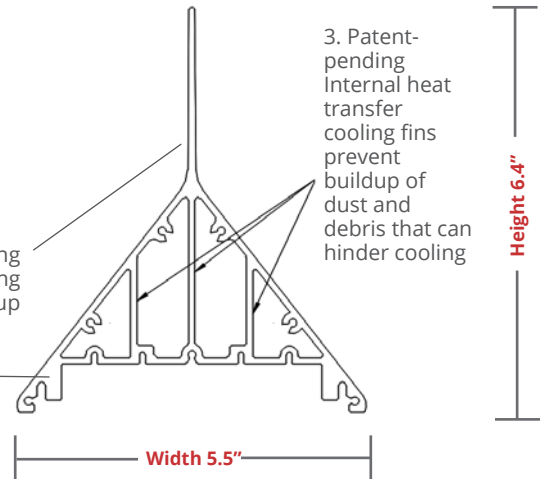
PREVENT PREMATURE FIXTURE FAILURE

As dust & debris accumulate, they act as insulators. This causes internal temperatures to soar and frequently leads to premature fixture failure. The Citadel Series' innovative design addresses this issue three different ways.

1. Patent-Pending Vertical exterior heat transfer cooling fin dissipates heat while preventing dust and debris build-up

2. Steeply sloped sidewalls resist build-up of dust and debris

3. Patent-pending Internal heat transfer cooling fins prevent buildup of dust and debris that can hinder cooling



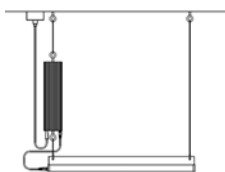
ENHANCE COOLING AND ELIMINATE RE-GRIDDING HEADACHES

With leading competitive units, the LED driver is inside the light, which results in a lot of heat. However, the Citadel Series features remotely mounted drivers.

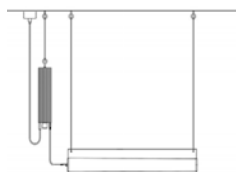
This approach helps keep the operating temperatures inside the fixture lower. It also allows more effective cooling of the driver, safeguarding

the integrity of the driver as well as the LED light itself.

Should changes in plant floor layout dictate the need to alter fixture placement, this can be accomplished quickly and easily without re-gridding hassles. Simply change out the power cord for one of suitable length to reach the new location of the light.



Minimum Footprint



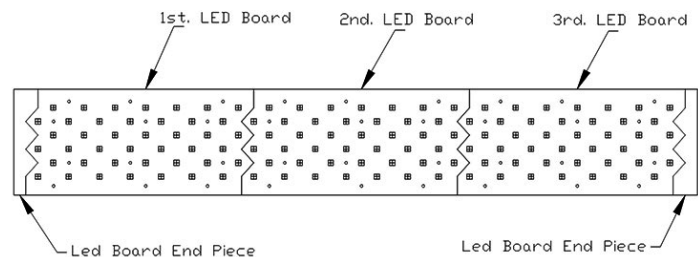
Driver Adjacent



Extend As Needed

MORE UNIFORM LIGHTING EFFICIENTLY CONFIGURED TO YOUR NEEDS

Patent-pending shark tooth design enables LED boards to be configured for any of 11 models, ranging from 100-900 Watts. Resulting array provides uniform light distribution with no dead spots.



3115 N 21st Street, Suite 2, Sheboygan, WI 53083
920-287-3840

tactiklighting.com



Citadel Series LED

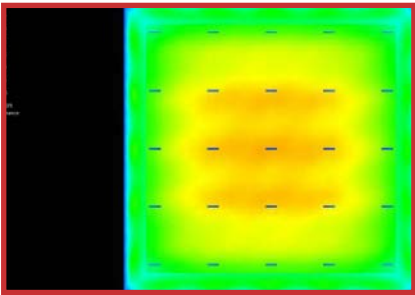
One Brilliant Idea After Another

Optics Information



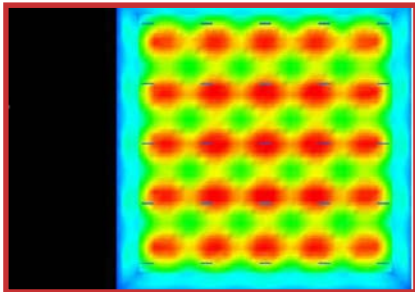
NO OPTICS

- > Great for general illumination. No Optics are also great if you want to maximize horizontal light & to achieve uniform lighting overall. Ideal for 30 feet and below.



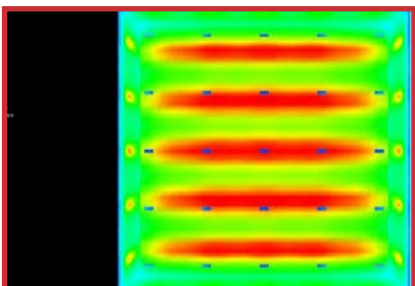
60 DEGREE OPTICS

- > Great for higher ceilings. Best used for fixtures mounted 30+ feet up. (This image captures a 25 foot mounting height).



AISLE OPTICS

- > Great for racking. With Aisle Optics, light is not wasted in adjoining aisles. This means you can reduce the number of fixtures in your facility, or can substantially reduce wattage when switching from HID or Fluorescents to LED.



3115 N 21st Street, Suite 2, Sheboygan, WI 53083
920-287-3840

tactiklighting.com



Citadel Series LED

Standard Temperature



STANDARD
TEMP

130°F

SPECIFICATIONS

Power Factor.....	>0.9
Input Voltage	120/277V & 347/480V
Performance.....	Up to 160 lm/W
Operational Temperature.....	-40° F to 130°F (-40°C to 55°C)
Distribution.....	120°, 60° & Aisle
Mount Type.....	Suspension
Kelvin Temperature	3000K, 4000K, 5000K
Available Wattages....	100W, 150W, 200W, 250W, 300W, 400W 500W, 600W, 700W, 800W, 900W
Color Rendering Index (4000K)	>70
Color Rendering Index (5000K)	>90

FEATURES

- > Up to 130°F (or 55°C). Driver temperature up to 149°F (or 65°C)
- > Inventronics Drivers with less than 1% failure rate
- > Patent-pending design extends fixture life by helping prevent build-up of insulating dust and debris and eliminates illumination dead spots
- > Patent-pending remote driver minimizes fixture operating temperature without re-gridding required
- > Includes 10 Year Module Warranty - Full light engine or plug & play driver module replacement, rather than parts
- > Fail off 15KA transient voltage surge suppressor (TVSS) protects fixture against failure due to power supply surges
- > Optional motion sensor. Choose from standard by Wattstopper with L7 lens (fig 1.1 & 1.2*), or Internet of Things (IOT) by Enlighted Sensors (fig 1.3).
- > Dimmable 0-10V
- > UL 1598 listed
- > IP65 rated



PLUGS & DRIVER BOXES



CABLES



> Fixture with Motion Sensor¹

LUMINOUS OUTPUT & DIMENSIONS

WATTAGE	LUMEN OUTPUT	LENGTH
100 Watts	14,400 lumens	18 inches
150 Watts	21,600 lumens	18 inches
200 Watts	28,800 lumens	26 inches
250 Watts	36,000 lumens	34 inches
300 Watts	43,200 lumens	34 inches
400 Watts	57,600 lumens	50 inches
500 Watts	72,000 lumens	58 inches
600 Watts	86,400 lumens	66 inches
700 Watts	100,800 lumens	82 inches
800 Watts	115,200 lumens	90 inches
900 Watts	129,600 lumens	98 inches

*All Motion sensor purchases come as a set, including a motion sensor and an L7 Wattstopper lens.
1 Coverage includes up to 40' and the maximum temperature rating for the motion sensors is 165 F

CITADEL ORDERING INFORMATION

SAMPLE ORDER NUMBER: CIT-1-100-40-1-2-1-1-1-X-X-1-1-1

SERIES	WATTAGE	KELVIN	OPTICS	LENS	FINISH	DRIVER VOLTAGE	REMOTE CABLE	MOTION SENSOR	BATTERY BACKUP	DLC	POWER CORD TYPE	POWER CORD LENGTH
CIT-1	100- (100W)	30- (3000K)	1- No Optics	2- Flat poly clear	1- Black	1- 120/277V	1- 6'	X- No	X- No	1- Standard	1- whip 120-277V	1- 6'
	150- (150W)	40- (4000K)	2- 60°	6- Tempered glass clear		4- 347/480V	2- 10'	1- Standard*	1- Yes	2- Premium	2- whip 347-480V	2- 12'
	200- (200W)	50- (5000K)	4- Aisle				3- 25'	2- IOT*			3- 125V 15amp Straight	
	250- (250W)						4- 50'				4- 125V 20amp Twistlock	
	300- (300W)						5- 100'				5- 250V 20amp Twistlock	
	400- (400W)						6- 200'				6- 277V 15amp Twistlock	
	500- (500W)						7- 500'				7- 277V 20amp Twistlock	
	600- (600W)						8- 1,000'				8- 480V 20amp Twistlock	
	700- (700W)						9- Custom				9- 600V 20amp Twistlock	
	800- (800W)											
	900- (900W)											

* Motion Sensor information: Standard (1) features sensors by Wattstopper with L7 lens. Internet of Things or IOT, (2) features sensors by Enlighted Sensors



Citadel Series LED

High Temperature



SPECIFICATIONS

Power Factor.....	>0.9
Input Voltage	120/277V & 347/480V
Performance.....	Up to 160 lm/W
Operational Temperature.....	-40° F to 195°F (-40°C to 90°C)
Distribution.....	120°, 60° & Aisle
Mount Type.....	Suspension
Kelvin Temperature	3000K, 4000K, 5000K
Available Wattages....	100W, 150W, 200W, 250W, 300W, 400W 500W, 600W, 700W, 800W, 900W
Color Rendering Index (4000K)	>70
Color Rendering Index (5000K)	>90

FEATURES

- > Up to 195°F (or 90°C). Driver temperature up to 149°F (or 65°C)
- > Inventronics Drivers with less than 1% failure rate
- > Patent-pending design extends fixture life by helping prevent build-up of insulating dust and debris and eliminates illumination dead spots
- > Patent-pending remote driver minimizes fixture operating temperature without re-gridding required
- > Includes 10 Year Module Warranty - Full light engine or plug & play driver module replacement, rather than parts
- > Fail off 15KA transient voltage surge suppressor (TVSS) protects fixture against failure due to power supply surges
- > Optional motion sensor. Choose from standard by Wattstopper with L7 lens (fig 1.1 & 1.2*), or Internet of Things (IOT) by Enlighted Sensors (fig 1.3).
- > Dimmable 0-10V
- > UL 1598 listed
- > IP65 rated



CITADEL ORDERING INFORMATION

SAMPLE ORDER NUMBER: CIT-2-100-40-1-6-1-1-1-X-X-1-1-1

SERIES	WATTAGE	KELVIN	OPTICS	LENS	FINISH	DRIVER VOLTAGE	REMOTE CABLE	MOTION SENSOR	BATTERY BACKUP	DLC	POWER CORD TYPE	POWER CORD LENGTH
CIT-2	100- (100W)	30- (3000K)	1- No Optics	6- Tempered glass clear	1- Black	1- 120/277V	1- 6'	X- No	X- No	1- Standard	1- whip 120-277V	1- 6'
	150- (150W)	40- (4000K)	2- 60°			4- 347/480V	2- 10'	1- Standard*	1- Yes	2- Premium	2- whip 347-480V	2- 12'
	200- (200W)	50- (5000K)	4- Aisle				3- 25'	2- IOT*			3- 125V 15amp Straight	
	250- (250W)						4- 50'				4- 125V 20amp Twistlock	
	300- (300W)						5- 100'				5- 250V 20amp Twistlock	
	400- (400W)						6- 200'				6- 277V 15amp Twistlock	
	500- (500W)						7- 500'				7- 277V 20amp Twistlock	
	600- (600W)						8- 1,000'				8- 480V 20amp Twistlock	
	700- (700W)						9- Custom				9- 600V 20amp Twistlock	
	800- (800W)											
	900- (900W)											

* Motion Sensor information: Standard (1) features sensors by Wattstopper with L7 lens. Internet of Things or IOT, (2) features sensors by Enlighted Sensors

PLUGS & DRIVER BOXES



CABLES



> Fixture with Motion Sensor¹

LUMINOUS OUTPUT & DIMENSIONS

WATTAGE	LUMEN OUTPUT	LENGTH
100 Watts	14,400 lumens	18 inches
150 Watts	21,600 lumens	26 inches
200 Watts	28,800 lumens	34 inches
250 Watts	36,000 lumens	42 inches
300 Watts	43,200 lumens	50 inches
400 Watts	57,600 lumens	66 inches
500 Watts	72,000 lumens	82 inches
600 Watts	86,400 lumens	98 inches
700 Watts	100,800 lumens	114 inches
800 Watts	115,200 lumens	130 inches
900 Watts	129,600 lumens	146 inches

*All Motion sensor purchases come as a set, including a motion sensor and an L7 Wattstopper lens.
1 Coverage includes up to 40' and the maximum temperature rating for the motion sensors is 165 F

Citadel Series LED

Extreme Temperature



Power Factor.....>0.9
 Input Voltage 120/277V & 347/480V
 Performance.....Up to 151 lm/W
 Operational Temperature.....-40°F to 245°F (-40°C to 118°C)
 Distribution..... 120°, 60° & Aisle
 Mount Type.....Suspension
 Kelvin Temperature3000K, 4000K, 5000K
 Available Wattages.... 100W, 150W, 200W, 250W, 300W, 400W
 500W, 600W, 700W, 800W, 900W
 Color Rendering Index (4000K)>70
 Color Rendering Index (5000K)>90

FEATURES

- > Up to 245°F (or 118°C). Driver temperature up to 149°F (or 65°C)
- > Inventronics Drivers with less than 1% failure rate
- > Patent-pending design extends fixture life by helping prevent build-up of insulating dust and debris and eliminates illumination dead spots
- > Patent-pending remote driver minimizes fixture operating temperature without re-gridding required
- > Includes 10 Year Module Warranty - Full light engine or plug & play driver module replacement, rather than parts
- > Fail off 15KA transient voltage surge suppressor (TVSS) protects fixture against failure due to power supply surges
- > Optional motion sensor. Choose from standard by Wattstopper with L7 lens (fig 1.1 & 1.2*), or Internet of Things (IOT) by Enlighted Sensors (fig 1.3).
- > Dimmable 0-10V
- > UL 1598 listed
- > IP65 rated



PLUGS & DRIVER BOXES



CABLES



> Fixture with Motion Sensor¹

LUMINOUS OUTPUT & DIMENSIONS

WATTAGE	LUMEN OUTPUT	LENGTH
100 Watts	14,400 lumens	18 inches
150 Watts	21,600 lumens	26 inches
200 Watts	28,800 lumens	34 inches
250 Watts	36,000 lumens	42 inches
300 Watts	43,200 lumens	50 inches
400 Watts	57,600 lumens	66 inches
500 Watts	72,000 lumens	82 inches
600 Watts	86,400 lumens	98 inches
700 Watts	100,800 lumens	114 inches
800 Watts	115,200 lumens	130 inches
900 Watts	129,600 lumens	146 inches

*All Motion sensor purchases come as a set, including a motion sensor and an L7 Wattstopper lens.
 1 Coverage includes up to 40' and the maximum temperature rating for the motion sensors is 165 F

CITADEL ORDERING INFORMATION

SAMPLE ORDER NUMBER: CIT-3-100-40-1-6-1-1-X-X-1-1-1

SERIES	WATTAGE	KELVIN	OPTICS	LENS	FINISH	DRIVER VOLTAGE	REMOTE CABLE	MOTION SENSOR	BATTERY BACKUP	DLC	POWER CORD TYPE	POWER CORD LENGTH
CIT-3	100- (100W)	30- (3000K)	1- No Optics	6- Tempered glass clear	1- Black	1- 120/277V	1- 6'	X- No	X- No	1- Standard	1- whip 120-277V	1- 6'
	150- (150W)	40- (4000K)	2- 60°			4- 347/480V	2- 10'	1- Standard*	1- Yes	2- Premium	2- whip 347-480V	2- 12'
	200- (200W)	50- (5000K)	4- Aisle				3- 25'	2- IOT*			3- 125V 15amp Straight	
	250- (250W)						4- 50'				4- 125V 20amp Twistlock	
	300- (300W)						5- 100'				5- 250V 20amp Twistlock	
	400- (400W)						6- 200'				6- 277V 15amp Twistlock	
	500- (500W)						7- 500'				7- 277V 20amp Twistlock	
	600- (600W)						8- 1,000'				8- 480V 20amp Twistlock	
	700- (700W)						9- Custom				9- 600V 20amp Twistlock	
	800- (800W)											
	900- (900W)											

* Motion Sensor information: Standard (1) features sensors by Wattstopper with L7 lens. Internet of Things or IOT, (2) features sensors by Enlighted Sensors





American Made & Measurably Better

What's better than higher heat ratings in your LED lights? Higher heat ratings in the 1st AMERICAN MADE LED lights!

You heard right. Industrial/commercial LED lights proudly made in America. So, you see a 46% increase in high temperature ratings. You know what you won't see? The cost of foreign trade tariffs jacking up the price of the products you want.



Tactik Labs is your added assurance of reliability.

Our LED lighting is designed to a higher standard. So is our validation process. At our in-house lab testing facility, our products undergo rigorous testing to provide you every assurance possible that all Tactik LED lighting will perform and last as promised. While others may talk about performance and reliability in harsh environments, Tactik Labs documents it.

Backed with confidence.

We protect distributors and customers with a 10-year warranty standard for added peace of mind. Plus, service after the sale includes a proactive warranty process – replacement is shipped immediately if a problem is identified and defective product is returned in its original box.



3115 N 21st Street, Suite 2, Sheboygan, WI 53083
920-287-3840 • sales@tactik.com

tactiklighting.com



E-252E-254