

# NCO Series LED

## Extreme Reliability for General Environments

### Easy installation

Plug and play  
waterproof cord  
connectors

### USA ingenuity

Dual purpose cooling and hanging fin

### Fast lead times

Scalable design  
up to 900 Watts

### Better designed projects

Optics 60° - 90° - 120° - Aisles

**INNOVATIVE,  
PATENT-PENDING DESIGN**  
redefines LED reliability for  
general purpose industrial environments.

When the top brass needs a job done, they rely on non-commissioned officers (NCOs). Our NCO Series delivers that same no-nonsense work ethic when it comes to military-grade LED lighting. No complaints. No Surprises. No excuses. Just a commitment to exceeding expectations. That's why the NCO is destined to be the backbone of mission-critical objectives across the country.



### American-Made Tough & Reliable

We understand that failure is not an option. Our fixtures are uniquely designed and built Military-Grade tough, so they stand up to almost anything without complaint.



### Keep Your cool with Remote Drivers

Tactik features remote drivers to prevent unwanted heat build-up. Helps extend fixture life and offers added flexibility to adjust to plant floor plans – without costly re-gridding.



### 4 Week Lead Time

Our innovative modular design and advanced manufacturing capabilities allow us to ship all orders, even customizations, in 4 weeks.





# NCO Series LED

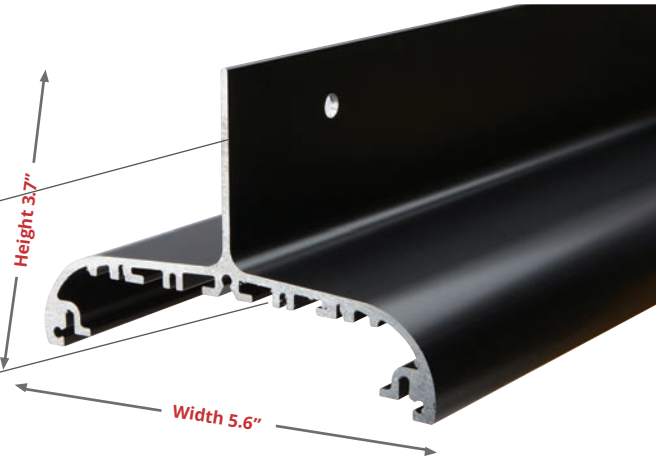
Filled with Bright Ideas for  
Improving Lighting Reliability

## DISSIPATE HEAT MORE EFFICIENTLY

The NCO Series' unique design helps reduce unwanted heat build-up two different ways.

1. Patent-pending vertical exterior heat transfer cooling fin dissipates heat

2. Internal heat transfer cooling fins prevent buildup of dust and debris that can hinder cooling



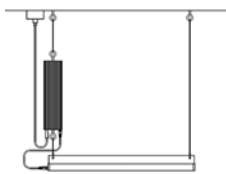
## ENHANCE COOLING AND ELIMINATE RE-GRIDDING HEADACHES

With leading competitive units, the LED driver is inside the light, which results in a lot of heat. However, the NCO Series features remotely mounted drivers.

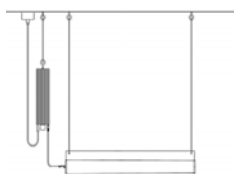
This approach helps keep the operating temperatures inside the fixture lower. It also allows more effective cooling of the driver, safeguarding

the integrity of the driver as well as the LED light itself.

Should changes in plant floor layout dictate the need to alter fixture placement, this can be accomplished quickly and easily without re-gridding hassles. Simply change out the power cord for one of suitable length to reach the new location of the light.



Minimum Footprint



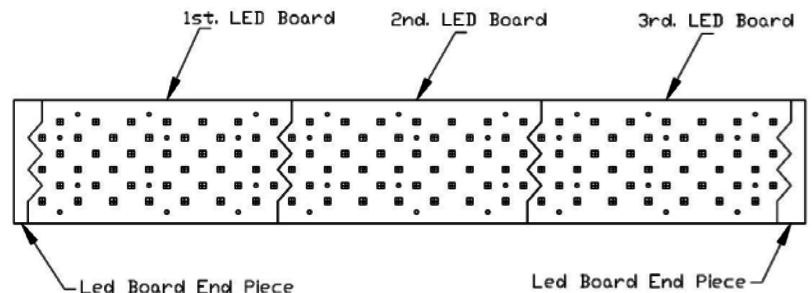
Driver Adjacent



Extend As Needed

## MORE UNIFORM LIGHTING EFFICIENTLY CONFIGURED TO YOUR NEEDS

Patent-pending shark tooth design enables LED boards to be configured for any of 11 models, ranging from 100-900 Watts. Resulting array provides uniform light distribution with no dead spots.



3115 N 21<sup>st</sup> Street, Suite 2, Sheboygan, WI 53083  
920-287-3840

[tactiklighting.com](http://tactiklighting.com)



# NCO Series LED

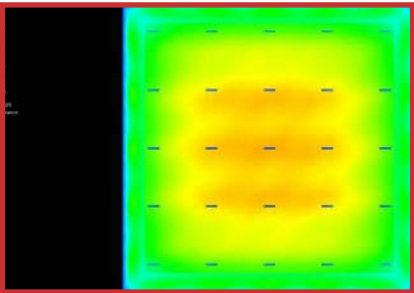
Filled with Bright Ideas for  
Improving Lighting Reliability

## Optics Information



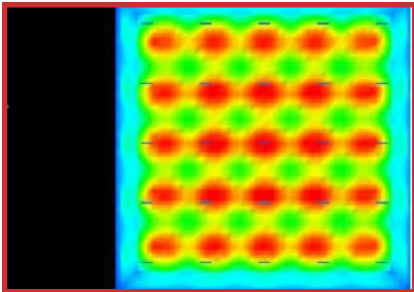
### NO OPTICS

- > Great for general illumination. No Optics are also great if you want to maximize horizontal light & to achieve uniform lighting overall. Ideal for 30 feet and below.



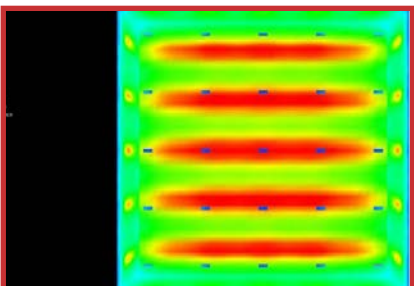
### 60 DEGREE OPTICS

- > Great for higher ceilings. Best used for fixtures mounted 30+ feet up. (This image captures a 25 foot mounting height).



### AISLE OPTICS

- > Great for racking. With Aisle Optics, light is not wasted in adjoining aisles. This means you can reduce the number of fixtures in your facility, or can substantially reduce wattage when switching from HID or Fluorescents to LED.



3115 N 21<sup>st</sup> Street, Suite 2, Sheboygan, WI 53083  
920-287-3840

[tactiklighting.com](http://tactiklighting.com)



# NCO Series LED

Standard Temperature



STANDARD  
TEMP

130°F

## SPECIFICATIONS

Power Factor.....>0.9  
Input Voltage ..... 120/277V & 347/480V  
Performance.....Up to 151 lm/W  
Operational Temperature..... -40°F to 130°F (-40°C to 55°C)  
Distribution..... 120°, 60° & Aisle  
Mount Type.....Suspension  
Kelvin Temperature .....3000K, 4000K, 5000K  
Available Wattages.... 100W, 150W, 200W, 250W, 300W, 400W  
500W, 600W, 700W, 800W, 900W  
Color Rendering Index (4000K) .....>70  
Color Rendering Index (5000K) .....>90

## FEATURES

- > Up to 130°F (or 55°C). Driver temperature up to 149°F (or 65°C)
- > Inventronics Drivers with less than 1% failure rate
- > Patent-pending design extends fixture life by helping prevent build-up of insulating dust and debris and eliminates illumination dead spots
- > Patent-pending remote driver minimizes fixture operating temperature without re-gridding required
- > Includes 10 Year Module Warranty - Full light engine or plug & play driver module replacement, rather than parts
- > Fail off 15KA transient voltage surge suppressor (TVSS) protects fixture against failure due to power supply surges
- > Optional motion sensor. Choose from standard by Wattstopper with L7 lens (fig 1.1 & 1.2\*), or Internet of Things (IOT) by Enlighted Sensors (fig 1.3).
- > Dimmable 0-10V
- > UL 1598 listed
- > IP65 rated

fig 1.1



fig 1.2



fig 1.3



## PLUGS & DRIVER BOX



## CABLES



> Fixture with Motion Sensor<sup>1</sup>

## LUMINOUS OUTPUT & DIMENSIONS

| WATTAGE   | LUMENS         | LENGTH    |
|-----------|----------------|-----------|
| 100 Watts | 12,960 lumens  | 18 inches |
| 150 Watts | 21,600 lumens  | 18 inches |
| 200 Watts | 31,070 lumens  | 26 inches |
| 250 Watts | 36,000 lumens  | 34 inches |
| 300 Watts | 44,020 lumens  | 34 inches |
| 400 Watts | 57,600 lumens  | 50 inches |
| 500 Watts | 72,000 lumens  | 58 inches |
| 600 Watts | 86,400 lumens  | 66 inches |
| 700 Watts | 100,800 lumens | 82 inches |
| 800 Watts | 115,200 lumens | 90 inches |
| 900 Watts | 129,600 lumens | 98 inches |

\*All Motion sensor purchases come as a set, including a motion sensor and an L7 Wattstopper lens.  
1 Coverage includes up to 40° and the maximum temperature rating for the motion sensors is 165 F

## NCO ORDERING INFORMATION

SAMPLE ORDER NUMBER: NCO-3-100-40-1-2-1-1-1-X-X-1-1-1

| SERIES | WATTAGE     | KELVIN      | OPTICS       | LENS                    | FINISH   | DRIVER VOLTAGE | REMOTE CABLE | MOTION SENSOR | BATTERY BACKUP | DLC         | POWER CORD TYPE         | POWER CORD LENGTH |
|--------|-------------|-------------|--------------|-------------------------|----------|----------------|--------------|---------------|----------------|-------------|-------------------------|-------------------|
| NCO-3  | 100- (100W) | 30- (3000K) | 1- No Optics | 2- Flat Poly Clear      | 1- Black | 1- 120/277V    | 1- 6'        | X- No         | X- No          | 1- Standard | 1- whip 120-277V        | 1- 6'             |
|        | 150- (150W) | 40- (4000K) | 2- 60°       | 6- Tempered glass clear |          | 4- 347/480V    | 2- 10'       | 1- Standard*  | 1- Yes         | 2- Premium  | 2- whip 347-480V        | 2- 12'            |
|        | 200- (200W) | 50- (5000K) | 4- Aisle     |                         |          |                | 3- 25'       | 2- IOT*       |                |             | 3- 125V 15amp Straight  |                   |
|        | 250- (250W) |             |              |                         |          |                | 4- 50'       |               |                |             | 4- 125V 20amp Twistlock |                   |
|        | 300- (300W) |             |              |                         |          |                | 5- 100'      |               |                |             | 5- 250V 20amp Twistlock |                   |
|        | 400- (400W) |             |              |                         |          |                | 6- 200'      |               |                |             | 6- 277V 15amp Twistlock |                   |
|        | 500- (500W) |             |              |                         |          |                | 7- 500'      |               |                |             | 7- 277V 20amp Twistlock |                   |
|        | 600- (600W) |             |              |                         |          |                | 8- 1,000'    |               |                |             | 8- 480V 20amp Twistlock |                   |
|        | 700- (700W) |             |              |                         |          |                | 9- Custom    |               |                |             | 9- 600V 20amp Twistlock |                   |
|        | 800- (800W) |             |              |                         |          |                |              |               |                |             |                         |                   |
|        | 900- (900W) |             |              |                         |          |                |              |               |                |             |                         |                   |

\* Motion Sensor information: Standard (1) features sensors by Wattstopper with L7 lens. Internet of Things or IOT, (2) features sensors by Enlighted Sensors





# NCO Series LED

## High Temperature



### SPECIFICATIONS

|                                     |  |
|-------------------------------------|--|
| Power Factor.....                   | >0.9   |
| Input Voltage .....                 | 120/277V & 347/480V  |
| Performance.....                    | Up to 151 lm/W   |
| Operational Temperature.....        | -40°F to 195°F (-40°C to 90°C)                                     |
| Distribution.....                   | 120°, 60° & Aisle  |
| Mount Type.....                     | Suspension   |
| Kelvin Temperature .....            | 3000K, 4000K, 5000K  |
| Available Wattages....              | 100W, 150W, 200W, 250W, 300W, 400W<br>500W, 600W, 700W, 800W, 900W |
| Color Rendering Index (4000K) ..... | >70  |
| Color Rendering Index (5000K) ..... | >90  |

### FEATURES

- > Up to 195°F (or 90°C). Driver temperature up to 149°F (or 65°C)
- > Inventronics Drivers with less than 1% failure rate
- > Patent-pending design extends fixture life by helping prevent build-up of insulating dust and debris and eliminates illumination dead spots
- > Patent-pending remote driver minimizes fixture operating temperature without re-gridding required
- > Includes 10 Year Module Warranty - Full light engine or plug & play driver module replacement, rather than parts
- > Fail off 15KA transient voltage surge suppressor (TVSS) protects fixture against failure due to power supply surges
- > Optional motion sensor. Choose from standard by Wattstopper with L7 lens (fig 1.1 & 1.2\*), or Internet of Things (IOT) by Enlighted Sensors (fig 1.3).
- > Dimmable 0-10V
- > UL 1598 listed
- > IP65 rated

fig 1.1



fig 1.2



fig 1.3



### PLUGS & DRIVER BOX



### CABLES



> Fixture with Motion Sensor<sup>1</sup>

### LUMINOUS OUTPUT & DIMENSIONS

| WATTAGE   | LUMENS         | LENGTH     |
|-----------|----------------|------------|
| 100 Watts | 12,960 lumens  | 18 inches  |
| 150 Watts | 21,600 lumens  | 26 inches  |
| 200 Watts | 31,070 lumens  | 34 inches  |
| 250 Watts | 36,000 lumens  | 42 inches  |
| 300 Watts | 44,020 lumens  | 50 inches  |
| 400 Watts | 57,600 lumens  | 66 inches  |
| 500 Watts | 72,000 lumens  | 82 inches  |
| 600 Watts | 86,400 lumens  | 98 inches  |
| 700 Watts | 100,800 lumens | 114 inches |
| 800 Watts | 115,200 lumens | 130 inches |
| 900 Watts | 129,600 lumens | 146 inches |

\*All Motion sensor purchases come as a set, including a motion sensor and an L7 Wattstopper lens.  
1 Coverage includes up to 40' and the maximum temperature rating for the motion sensors is 165 F

### NCO ORDERING INFORMATION

SAMPLE ORDER NUMBER: NCO-4-100-40-1-6-1-1-1-X-X-1-1-1

| SERIES | WATTAGE     | KELVIN      | OPTICS       | LENS                    | FINISH   | DRIVER VOLTAGE | REMOTE CABLE | MOTION SENSOR | BATTERY BACKUP | DLC         | POWER CORD TYPE         | POWER CORD LENGTH |
|--------|-------------|-------------|--------------|-------------------------|----------|----------------|--------------|---------------|----------------|-------------|-------------------------|-------------------|
| NCO-4  | 100- (100W) | 30- (3000K) | 1- No Optics | 6- Tempered glass clear | 1- Black | 1- 120/277V    | 1- 6'        | X- No         | X- No          | 1- Standard | 1- whip 120-277V        | 1- 6'             |
|        | 150- (150W) | 40- (4000K) | 2- 60°       |                         |          | 4- 347/480V    | 2- 10'       | 1- Standard*  | 1- Yes         | 2- Premium  | 2- whip 347-480V        | 2- 12'            |
|        | 200- (200W) | 50- (5000K) | 4- Aisle     |                         |          |                | 3- 25'       | 2- IOT*       |                |             | 3- 125V 15amp Straight  |                   |
|        | 250- (250W) |             |              |                         |          |                | 4- 50'       |               |                |             | 4- 125V 20amp Twistlock |                   |
|        | 300- (300W) |             |              |                         |          |                | 5- 100'      |               |                |             | 5- 250V 20amp Twistlock |                   |
|        | 400- (400W) |             |              |                         |          |                | 6- 200'      |               |                |             | 6- 277V 15amp Twistlock |                   |
|        | 500- (500W) |             |              |                         |          |                | 7- 500'      |               |                |             | 7- 277V 20amp Twistlock |                   |
|        | 600- (600W) |             |              |                         |          |                | 8- 1,000'    |               |                |             | 8- 480V 20amp Twistlock |                   |
|        | 700- (700W) |             |              |                         |          |                | 9- Custom    |               |                |             | 9- 600V 20amp Twistlock |                   |
|        | 800- (800W) |             |              |                         |          |                |              |               |                |             |                         |                   |
|        | 900- (900W) |             |              |                         |          |                |              |               |                |             |                         |                   |

\* Motion Sensor information: Standard (1) features sensors by Wattstopper with L7 lens. Internet of Things or IOT, (2) features sensors by Enlighted Sensors

# NCO Series LED

## Extreme Temperature



### SPECIFICATIONS

Power Factor.....>0.9  
 Input Voltage ..... 120/277V & 347/480V  
 Performance.....Up to 151 lm/W  
 Operational Temperature.....-40°F to 245°F (-40°C to 118°C)  
 Distribution..... 120°, 60° & Aisle  
 Mount Type.....Suspension  
 Kelvin Temperature .....3000K, 4000K, 5000K  
 Available Wattages.... 100W, 150W, 200W, 250W, 300W, 400W  
 500W, 600W, 700W, 800W, 900W  
 Color Rendering Index (4000K) .....>70  
 Color Rendering Index (5000K) .....>90

### FEATURES

- > Up to 245°F (or 118°C). Driver temperature up to 149°F (or 65°C)
- > Inventronics Drivers with less than 1% failure rate
- > Patent-pending design extends fixture life by helping prevent build-up of insulating dust and debris and eliminates illumination dead spots
- > Patent-pending remote driver minimizes fixture operating temperature without re-gridding required
- > Includes 10 Year Module Warranty - Full light engine or plug & play driver module replacement, rather than parts
- > Fail off 15KA transient voltage surge suppressor (TVSS) protects fixture against failure due to power supply surges
- > Optional motion sensor. Choose from standard by Wattstopper with L7 lens (fig 1.1 & 1.2\*), or Internet of Things (IOT) by Enlighted Sensors (fig 1.3).
- > Dimmable 0-10V
- > UL 1598 listed
- > IP65 rated

fig 1.1



fig 1.2



fig 1.3



### PLUGS & DRIVER BOX



### CABLES



> Fixture with Motion Sensor<sup>1</sup>

### LUMINOUS OUTPUT & DIMENSIONS

| WATTAGE   | LUMENS         | LENGTH     |
|-----------|----------------|------------|
| 100 Watts | 12,960 lumens  | 18 inches  |
| 150 Watts | 21,600 lumens  | 26 inches  |
| 200 Watts | 31,070 lumens  | 34 inches  |
| 250 Watts | 36,000 lumens  | 42 inches  |
| 300 Watts | 44,020 lumens  | 50 inches  |
| 400 Watts | 57,600 lumens  | 66 inches  |
| 500 Watts | 72,000 lumens  | 82 inches  |
| 600 Watts | 86,400 lumens  | 98 inches  |
| 700 Watts | 100,800 lumens | 114 inches |
| 800 Watts | 115,200 lumens | 130 inches |
| 900 Watts | 129,600 lumens | 146 inches |

\*All Motion sensor purchases come as a set, including a motion sensor and an L7 Wattstopper lens.  
<sup>1</sup> Coverage includes up to 40' and the maximum temperature rating for the motion sensors is 165 F

### NCO ORDERING INFORMATION

SAMPLE ORDER NUMBER: NCO-5-100-40-1-6-1-1-X-X-1-1-1

| SERIES | WATTAGE     | KELVIN      | OPTICS       | LENS                    | FINISH   | DRIVER VOLTAGE | REMOTE CABLE | MOTION SENSOR | BATTERY BACKUP | DLC         | POWER CORD TYPE         | POWER CORD LENGTH |
|--------|-------------|-------------|--------------|-------------------------|----------|----------------|--------------|---------------|----------------|-------------|-------------------------|-------------------|
| NCO-5  | 100- (100W) | 30- (3000K) | 1- No Optics | 6- Tempered glass clear | 1- Black | 1- 120/277V    | 1- 6'        | X- No         | X- No          | 1- Standard | 1- whip 120-277V        | 1- 6'             |
|        | 150- (150W) | 40- (4000K) | 2- 60°       |                         |          | 4- 347/480V    | 2- 10'       | 1- Standard*  | 1- Yes         | 2- Premium  | 2- whip 347-480V        | 2- 12'            |
|        | 200- (200W) | 50- (5000K) | 4- Aisle     |                         |          |                | 3- 25'       | 2- IOT*       |                |             | 3- 125V 15amp Straight  |                   |
|        | 250- (250W) |             |              |                         |          |                | 4- 50'       |               |                |             | 4- 125V 20amp Twistlock |                   |
|        | 300- (300W) |             |              |                         |          |                | 5- 100'      |               |                |             | 5- 250V 20amp Twistlock |                   |
|        | 400- (400W) |             |              |                         |          |                | 6- 200'      |               |                |             | 6- 277V 15amp Twistlock |                   |
|        | 500- (500W) |             |              |                         |          |                | 7- 500'      |               |                |             | 7- 277V 20amp Twistlock |                   |
|        | 600- (600W) |             |              |                         |          |                | 8- 1,000'    |               |                |             | 8- 480V 20amp Twistlock |                   |
|        | 700- (700W) |             |              |                         |          |                | 9- Custom    |               |                |             | 9- 600V 20amp Twistlock |                   |
|        | 800- (800W) |             |              |                         |          |                |              |               |                |             |                         |                   |
|        | 900- (900W) |             |              |                         |          |                |              |               |                |             |                         |                   |

\* Motion Sensor information: Standard (1) features sensors by Wattstopper with L7 lens. Internet of Things or IOT, (2) features sensors by Enlighted Sensors



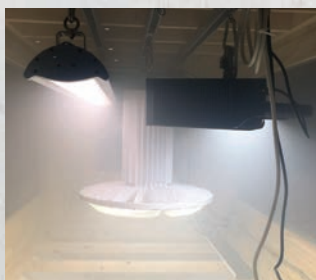




## American Made & Measurably Better

### What's better than higher heat ratings in your LED lights? Higher heat ratings in the 1st AMERICAN MADE LED lights!

You heard right. Industrial/commercial LED lights proudly made in America. So, you see a 46% increase in high temperature ratings. You know what you won't see? The cost of foreign trade tariffs jacking up the price of the products you want.



### Tactik Labs is your added assurance of reliability.

Our LED lighting is designed to a higher standard. So is our validation process. At our in-house lab testing facility, our products undergo rigorous testing to provide you every assurance possible that all Tactik LED lighting will perform and last as promised. While others may talk about performance and reliability in harsh environments, Tactik Labs documents it.

### Backed with confidence.

We protect distributors and customers with a 10-year warranty standard for added peace of mind. Plus, service after the sale includes a proactive warranty process – replacement is shipped immediately if a problem is identified and defective product is returned in its original box.



3115 N 21<sup>st</sup> Street, Suite 2, Sheboygan, WI 53083  
920-287-3840 • sales@tactik.com

[tactiklighting.com](http://tactiklighting.com)

