

# Citadel Series LED

for High Dust & Debris Environments

## Dirty environment approved

Free from harmful dust and dirt buildups that prevent fixtures from staying cool

## Easy installation

Plug and play waterproof cord connectors

Fast lead times

## USA ingenuity

Dual purpose cooling and hanging fin

## Scalable design

100 – 900 Watts

## Better designed projects

Optics 60° – 90° – 120° – Aisles

**REVOLUTIONARY,  
PATENT-PENDING DESIGN  
sets new performance standards for  
extreme industrial environments.**

Want the very best and brightest in military-grade LED lighting? Turn to the Citadel. This series looks like no other LED because it's designed like no other LED. As a result, it stands up to the most demanding high-heat, high-dust & debris environments like no other LED.



## American-Made Tough & Reliable

We understand that failure is not an option. Our fixtures are uniquely designed and built Military-Grade tough, so they stand up to almost anything without complaint.



## Keep Your cool with Remote Drivers

Tactik features remote drivers to prevent unwanted heat build-up. Helps extend fixture life and offers added flexibility to adjust to plant floor plans – without costly re-gridding.



## 2 Week Lead Time

Our innovative modular design and advanced manufacturing capabilities allow us to ship all orders, even customizations, in 2 weeks.





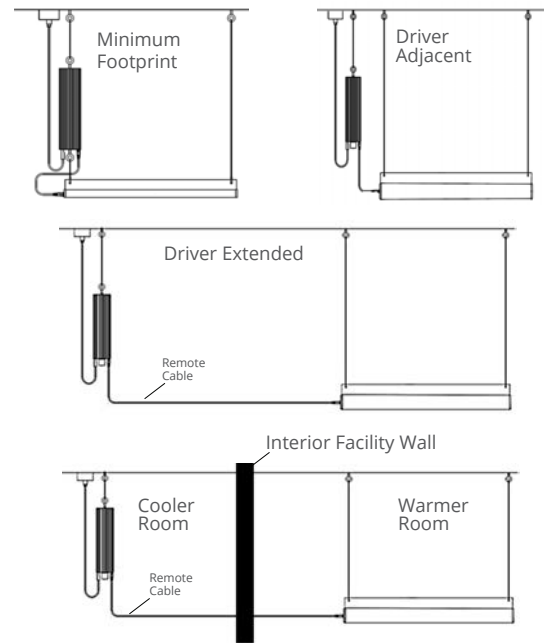
# Citadel Series LED

## One Brilliant Idea After Another

### REMOTE DRIVERS ENHANCE COOLING AND ELIMINATE LED RE-GRIDDING HEADACHES

With leading competitive units, the LED driver is inside the light, which results in a lot of heat. Tactik's products have substantially lower fixture temperatures because we offer remotely mounted fixtures. Whether your fixture and driver are spaced 20 feet apart, 200 feet apart, or are mounted in different rooms entirely, our remote driver options protect the driver integrity and protect the LED light itself by allowing the driver to be cooled more effectively.

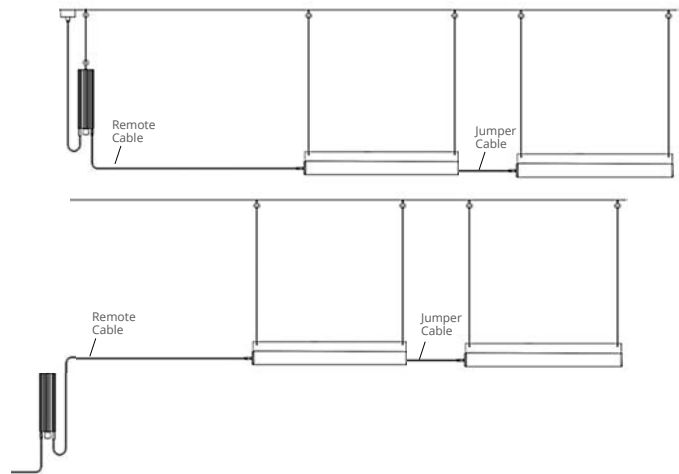
Furthermore, if you need to alter fixture placement due to changes to your plant floor layout, this can be accomplished quickly and easily without re-gridding hassles. Simply change out the remote cable cord for one of suitable length to reach the new location of the fixture.



### SAVE MONEY + SPACE WITH CUSTOM DAISY CHAIN CONFIGURATIONS

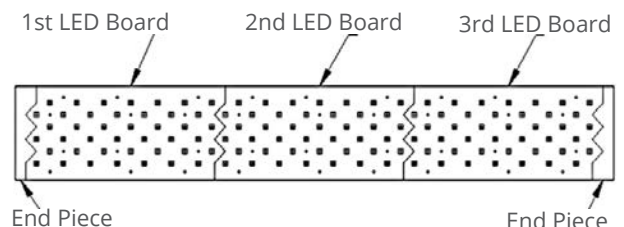
Our custom daisy chain configurations allow you to power multiple fixtures with one driver, saving you money and space. And we can custom-mount your drivers at a height that best suits your environment.

Reach out to a manufacturing representative today for a custom quote for your facility.



### TACTIK ENGINEERED LED BOARDS PROVIDE UNIFORM LED LIGHTING EFFICIENTLY CONFIGURED TO YOUR NEEDS

Patent-pending shark tooth design enables LED boards to be configured for any of 11 models, ranging from 100-900 Watts. The resulting array provides uniform light distribution with no dead spots.



# Citadel Series LED

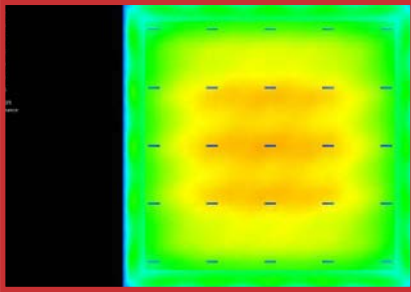
One Brilliant Idea After Another

## Optics Information

---

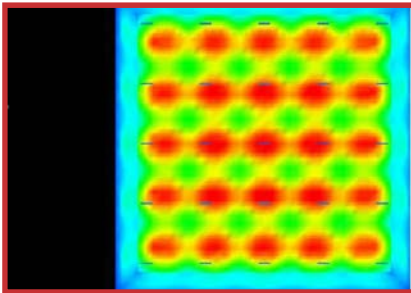
### NO OPTICS

- > Great for general illumination. No Optics are also great if you want to maximize horizontal light & to achieve uniform lighting overall. Ideal for 30 feet and below.



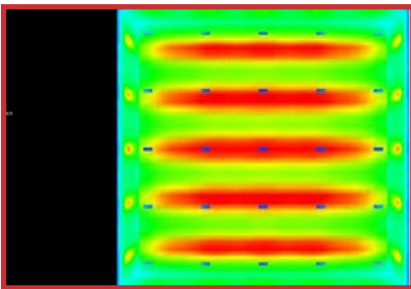
### 60 DEGREE OPTICS

- > Great for higher ceilings. Best used for fixtures mounted 30+ feet up. (This image captures a 25 foot mounting height).



### AISLE OPTICS

- > Great for racking. With Aisle Optics, light is not wasted in adjoining aisles. This means you can reduce the number of fixtures in your facility, or can substantially reduce wattage when switching from HID or Fluorescents to LED.



# Citadel Series LED



fig 1.1



fig 1.2



fig 1.3

\*All Motion sensor purchases come as a set, including a motion sensor and an L7 Wattstopper lens. Coverage includes up to 40' and the maximum temperature rating for the motion sensors is 165°F

## FEATURES

- > Driver temperature up to 149°F (65°C)
- > Inventronics Drivers with less than 1% failure rate
- > Patent-pending remote driver minimizes fixture operating temperature without re-gridding required
- > Patent-pending design extends fixture life by helping prevent build-up of insulating dust and debris and eliminating illumination dead spots
- > Includes 10 Year Module Warranty - Full light engine or plug & play driver module replacement, rather than parts
- > Fail off 15KA transient voltage surge suppressor (TVSS) protects fixture against failure due to power supply surges
- > Optional motion sensor. Choose from standard by Wattstopper with L7 lens (fig 1.1 & fig 1.2\*), or Internet of Things (IOT) by Enlighted Sensors (fig 1.3).
- > Dimmable 0-10V
- > UL 1598 listed
- > IP65 rated

## LUMINOUS OUTPUT & DIMENSIONS

WATTAGE	STANDARD TEMP		HIGH TEMP		EXTREME TEMP	
	OUTPUT	LENGTH	OUTPUT	LENGTH	OUTPUT	LENGTH
100 Watts	13,220 lumens	18 in	13,220 lumens	18 in	13,220 lumens	18 in
150 Watts	21,600 lumens	18 in	21,600 lumens	26 in	21,600 lumens	26 in
200 Watts	28,800 lumens	26 in	28,800 lumens	34 in	28,800 lumens	34 in
250 Watts	36,000 lumens	34 in	36,000 lumens	42 in	36,000 lumens	42 in
300 Watts	43,200 lumens	34 in	43,200 lumens	50 in	43,200 lumens	50 in
400 Watts	57,600 lumens	50 in	57,600 lumens	66 in	57,600 lumens	66 in
500 Watts	72,000 lumens	50 in	72,000 lumens	82 in	72,000 lumens	82 in
600 Watts	86,400 lumens	66 in	86,400 lumens	98 in	86,400 lumens	98 in
700 Watts	100,800 lumens	82 in	100,800 lumens	114 in	100,800 lumens	114 in
800 Watts	115,200 lumens	90 in	115,200 lumens	130 in	115,200 lumens	130 in
900 Watts	129,600 lumens	98 in	126,000 lumens	146 in	126,000 lumens	146 in

## OPERATIONAL TEMPERATURE

STANDARD TEMP	HIGH TEMP	EXTREME TEMP
-40°F to 130°F (or -40°C to 55°C)	-40°F to 195°F (or -40°C to 90°C)	-40°F to 245°F (or -40°C to 118°C)

## CITADEL ORDERING INFORMATION

ORDER NUMBER: CIT-1-100-30-1-2-1-1-1-X-X-1-1-1

SERIES	WATTAGE	KELVIN	OPTICS	LENS	FINISH	DRIVER VOLTAGE	REMOTE CABLE	MOTION SENSOR	BATTERY BACKUP	DLC	POWER CORD TYPE	CORD LENGTH
CIT-1 Std Temp	100	30- (3000K)	1- No Optics	2- Flat Poly Clear <sup>1</sup>	1- Black	1- 120/277V	1- 6'	X- No	X- No	1- Standard	1- whip 120-277V	1- 6'
CIT-2 High Temp	150	40- (4000K)	2- 60°	6- Tempered glass clear		4- 347/480V	2- 10'	1- Standard <sup>2</sup>	1- Yes	2- Premium	2- whip 347-480V	2- 12'
CIT-3 Extreme	200	50- (5000K)	4- Aisle				3- 25'	2- IOT <sup>2</sup>			3- 125V 15amp Straight	
	250						4- 50'				4- 125V 20amp Twistlock	
	300						5- 100'				5- 250V 20amp Twistlock	
	400						6- 200'				6- 277V 15amp Twistlock	
	500						7- 500'				7- 277V 20amp Twistlock	
	600						8- 1,000'				8- 480V 20amp Twistlock	
	700						9- Custom				9- 600V 20amp Twistlock	
	800											
	900											

<sup>1</sup> Due to melting concerns, Flat Poly Clear Lenses are only available with CIT-1 Standard Temperature Fixtures

<sup>2</sup> Motion Sensor information: Standard (1) features sensors by Wattstopper with L7 lens. Internet of Things or IOT, (2) features sensors by Enlighted Sensors





## American Made & Measurably Better

### What's better than higher heat ratings in your LED lights? Higher heat ratings in the 1st AMERICAN MADE LED lights!

You heard right. Industrial/commercial LED lights proudly made in America. So, you see a 46% increase in high temperature ratings. You know what you won't see? The cost of foreign trade tariffs jacking up the price of the products you want.



### Tactik Labs is your added assurance of reliability.

Our LED lighting is designed to a higher standard. So is our validation process. At our in-house lab testing facility, our products undergo rigorous testing to provide you every assurance possible that all Tactik LED lighting will perform and last as promised. While others may talk about performance and reliability in harsh environments, Tactik Labs documents it.

### Backed with confidence.

We protect distributors and customers with a 10-year warranty standard for added peace of mind. Plus, service after the sale includes a proactive warranty process – replacement is shipped immediately if a problem is identified and defective product is returned in its original box.



3115 N 21<sup>st</sup> Street, Suite 2, Sheboygan, WI 53083  
920-287-3840 • sales@tactik.com

[tactiklighting.com](http://tactiklighting.com)

