



**COMMITTED TO OFFERING AMERICAN INDUSTRY
A BRIGHTER FUTURE**

LIGHTING CATALOG



**Our Reliability Has Been Proven
Under the Harshest Conditions Imaginable**



LEDs MADE FOR THE REAL WORLD — YOUR WORLD.

In theory, LED lighting is supposed to offer significantly improved energy efficiency compared to more traditional commercial and industrial lighting. In reality, environmental factors – including temperature, dust, grit, vibration, moisture and corrosive vapors – can degrade LED performance and reliability rapidly. As a result, American businesses have become increasingly frustrated with all the cheaply designed-and-made products from overseas. You demanded better. We delivered.



WELCOME TO MILITARY-GRADE LED LIGHTING

Designed and built to a higher standard to deliver the performance, reliability and energy savings you expect from LEDs.

- > Built-In Protection includes seals and gaskets to keep contaminants out
- > Added Reliability and consistency of performance thanks to transient voltage surge suppression
- > Added Durability of best-in-class branded drivers with soldered wires
- > Extended Life due to low LED and driver running temperatures results in the lowest life cycle costs of any industrial-grade LED lighting

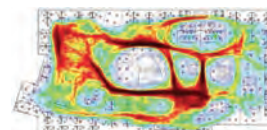
KEEP YOUR COOL WITH REMOTE DRIVERS.

Most Tactik lights utilize remote drivers to prevent unwanted heat build-up inside the fixture, which can degrade performance and is a leading cause of premature fixture failure.



Remote drivers also offer added flexibility, allowing you to easily and economically adjust your lighting to evolving plant floor needs – without costly and time-consuming re-gridding.

MANAGE MORE EFFECTIVELY WITH SMART TECHNOLOGY.



Turn your lighting into smart building solutions with the only U.S. industrial LED lighting manufacturer to offer the world's most advanced wireless lighting control capabilities – Enlighted; A Siemens Company.

- > Improve Workflow using space utilization, motion and occupancy data
- > Optimize Energy Savings with daylight harvesting and task tuning data
- > Increase Productivity of employees and assets with RFID location technology



From left to right: Wayne Rettig (Creative Director), Dave Wasmer (New Product Development Engineer), Tim Wasmer (Founder & CEO), Sami Richter (Marketing Administrator), Jeff Strauss (Electrician & Team Leader), Sheila Oppeneer (Production & Customer Service Specialist), and Chris Drews (Production Team Leader).



VETERAN OWNED COMPANY DEDICATED TO PRODUCTS THAT ARE MILITARY GRADE TOUGH

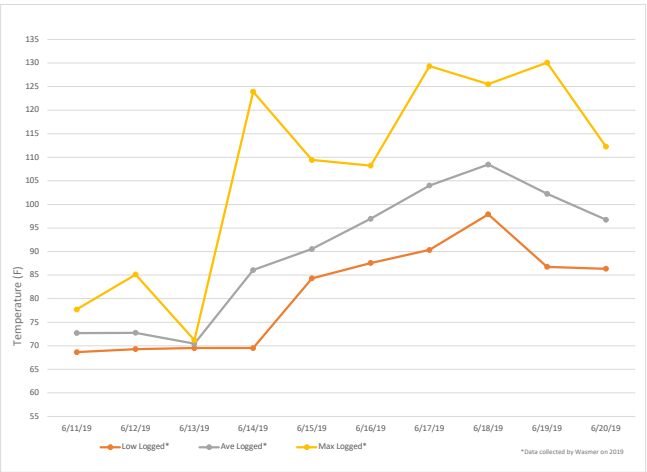
Tactik Lighting CEO and Lead Energy Expert Tim Wasmer, a U.S. Army veteran, makes sure that our “failure is not an option” mindset permeates the entire company. We are far more than just LED lighting engineers. We’re passionately committed to being the team our clients depend on for the right energy efficiency solutions for their businesses. On time. Within budget. Delivering results as promised.

HOW DO OUR PRODUCTS HOLD UP?

The team at Tactik Lighting put our military-grade light fixtures to the test. They held up - under the weight of a 5800 lb jeep! That is the strength and durability you can expect from all of the products manufactured and sold by Tactik Lighting.



Military-Grade Is a Matter of Integrity; So Is Our Word



EXTREME TEMPERATURE TESTING



CORROSIVE TESTING AND MORE

TACTIK LABS IS YOUR ADDED ASSURANCE OF RELIABILITY

Our LED lighting is designed to a higher standard. So is our validation process.

At our in-house lab testing facility, our products undergo rigorous testing to provide you every assurance possible that all Tactik LED lighting will perform and last as promised.

While others may talk about performance and reliability in harsh environments, Tactik Labs documents it. Temperature extremes – and even heat build-up. Check. The ability to effectively resist the effects of dust, grit, moisture and corrosive gases. Check.

Because we want to help you make the best-informed decisions possible regarding your LED lighting choices, we also test leading competitors’ units. That way, you can see how our Military-Grade LED Lighting stacks up against the competition in side-by-side comparisons.

Through years of testing, including 3rd party UL and DLC testing, we’ve learned a lot. And we look forward to sharing what we’ve learned with you. After all, the integrity of your LED lighting and the company that manufactures it matters. You have our word on it.

Foot Candle Ordering Information

	0-10fc		31-40fc		61-70fc
	11-20fc		41-50fc		71+ fc
	21-30fc		51-60fc		

Footcandle Averages 20’x20’ grid 120 degree

Lumens									
50000	124	113	107	101	96	91	86	82	77
45000	112	102	96	91	86	82	78	74	70
40000	99	91	84	81	77	73	69	65	62
35000	87	79	75	71	67	64	60	57	54
30000	75	68	64	61	57	55	52	49	46
25000	62	57	53	50	48	46	43	41	39
20000	50	45	43	40	38	36	34	33	31
15000	37	34	32	30	29	27	26	25	23
10000	25	23	21	20	19	18	17	16	15
5000	13	11	11	10	10	9	9	8	8
Height	10’	15’	20’	25’	30’	35’	40’	45’	50’

Footcandle Averages 25’x25’ grid 120 degree

Lumens									
50000	84	75	70	65	62	58	55	53	50
45000	76	67	63	59	55	52	50	47	45
40000	68	60	56	52	49	47	44	42	40
35000	59	53	49	46	43	41	39	37	35
30000	51	45	42	39	37	35	33	32	30
25000	42	38	35	33	31	29	28	26	25
20000	34	30	28	26	25	23	22	21	20
15000	25	23	21	20	18	18	17	16	15
10000	17	15	14	13	12	12	11	11	10
5000	8	8	7	7	6	6	6	5	5
Height	10’	15’	20’	25’	30’	35’	40’	45’	50’

Footcandle Averages 25’x25’ grid 60 degree

Lumens									
50000	89	84	77	72	69	67	65	62	60
45000	81	76	69	65	62	60	59	56	54
40000	72	67	61	58	56	54	52	50	48
35000	63	59	54	51	49	47	45	44	42
30000	54	50	46	43	42	40	39	37	36
25000	45	42	38	36	35	33	32	31	30
20000	36	34	31	29	28	27	26	25	24
15000	27	25	23	22	21	20	19	19	18
10000	18	17	15	14	14	13	13	12	12
5000	9	8	8	7	7	7	6	6	6
Height	10’	15’	20’	25’	30’	35’	40’	45’	50’

HOW MANY FOOTCANDLES DO I NEED?

Light levels are a very sensitive conversation. Too much light and spotty or non-uniform light, can both be hard on the eyes. You will want to make sure you have enough uniformly distributed light to do the job efficiently and effectively. A simple rule of thumb for lighting requirements is 20 footcandles for a warehouse, 40 footcandles for production areas and 60 footcandles for inspection areas and retail applications. A best practice is the use of a footcandle meter on a walk around of your facility. This will help you determine which areas are well lit and allow comparison to recommended IES light levels. The IES provides guidelines for specific light levels by work area and industry. Call us at Tactik Lighting for assistance with IES recommendations and best practices for your application.

HOW MANY LUMENS DO I NEED TO REACH THE FOOTCANDLE RECOMMENDATIONS THAT I DETERMINED FOR MY AREA?

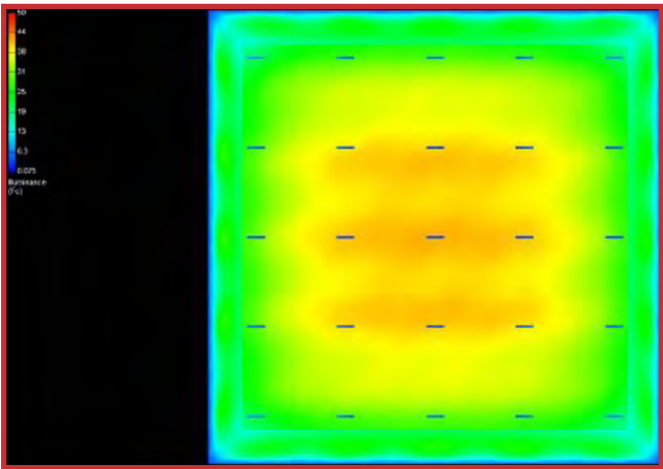
Many variables must be considered when you decide on light fixture lumens for your facility, including but not limited to: surface (floor-wall-ceiling) reflectance, airborne particulates, obstructions, fixture efficiency, lens material (acrylic-polycarbonate-glass), lens transparency and height and distance between fixtures. The best way to determine precise needs is to have Tactik Lighting professionals prepare a custom lighting layout for you.

The tables on this page are provided to help quickly guide you to a fixture lumen package that will be perfect for your application.

Optics Ordering Information

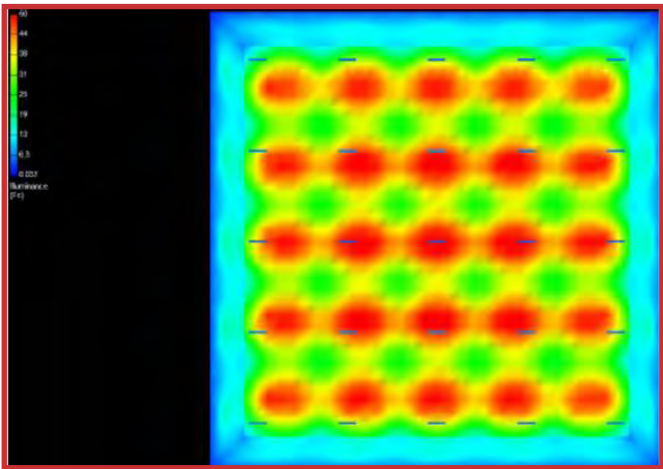
NO OPTICS

> Great for general illumination. No Optics are also great if you want to maximize horizontal light & to achieve uniform lighting overall. Ideal for 30 feet and below.



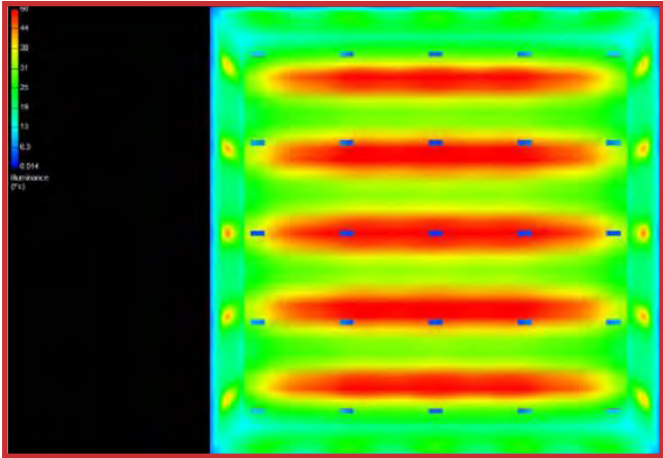
60 DEGREE OPTICS

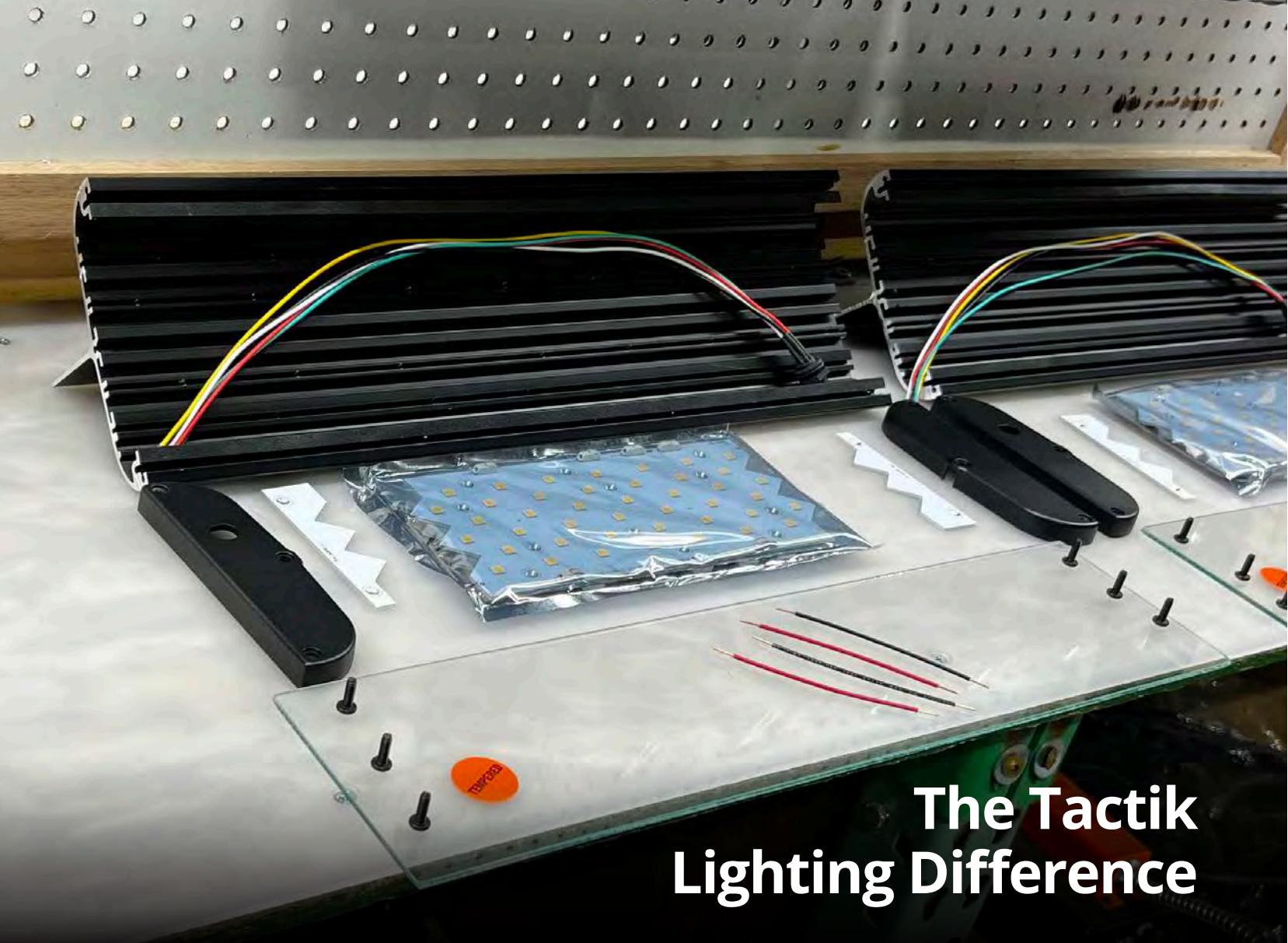
> Great for higher ceilings. Best used for fixtures mounted 30+ feet up. (This image captures a 25 foot mounting height).



AISLE OPTICS

> Great for racking. With Aisle Optics, light is not wasted in adjoining aisles. This means you can reduce the number of fixtures in your facility, or can substantially reduce wattage when switching from HID or Flourescents to LED.





The Tactik Lighting Difference

TACTIK LIGHTING'S "BUY IT ONCE" NO OBSOLESCENCE PHILOSOPHY

At Tactik Lighting we believe in continuous innovation and market disruption. One innovative initiative is our "Buy it Once" philosophy. With Tactik's Refurbishment program, any product out of warranty and at the end of its expected life can be returned to the factory for reconditioning. Our products are designed and built to last long after our competitors products have failed, but eventually they will need to be replaced. If you have ever been in a situation where a few fixtures have failed, only to find they have been discontinued or redesigned so that replacements will not match the existing array, this can be incredibly frustrating. With Tactik Lighting products, that frustration

will be a thing of the past.

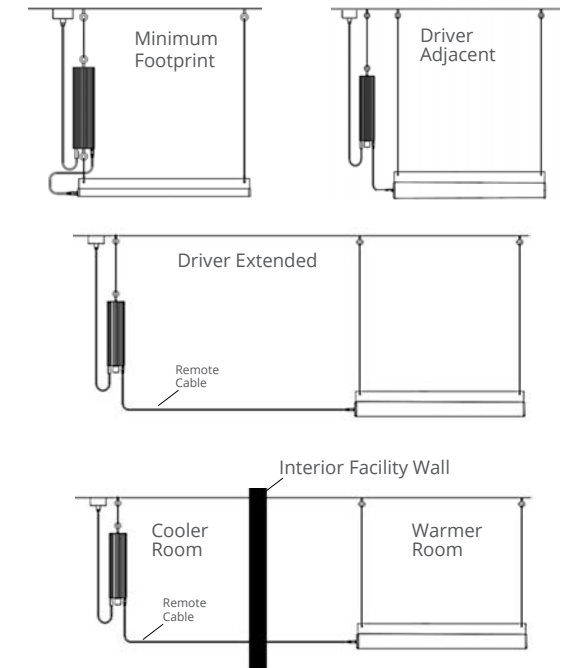
Tactik's Refurbishment program includes new wearable parts such as LED boards, drivers and transient voltage suppressors. Non wearable parts, such as housings and mounting are reconditioned and a virtually new and updated product is returned, at a much lower price, and with a full 10 year warranty. They will also match your existing fixtures.

No one knows what advancements will be made in LED technology 10 years from now. But our non obsolescence policy promises to maintain state of the art technology, in the same form factor, while promoting sustainability.

REMOTE DRIVERS ENHANCE COOLING AND ELIMINATE LED RE-GRIDDING HEADACHES

With leading competitive units, the LED driver is inside the light, which results in a lot of heat. Tactik's products have substantially lower fixture temperatures because we offer remotely mounted fixtures. Whether your fixture and driver are spaced 20 feet apart, 200 feet apart, or are mounted in different rooms entirely, our remote driver options protect the driver integrity and protect the LED light itself by allowing the driver to be cooled more effectively.

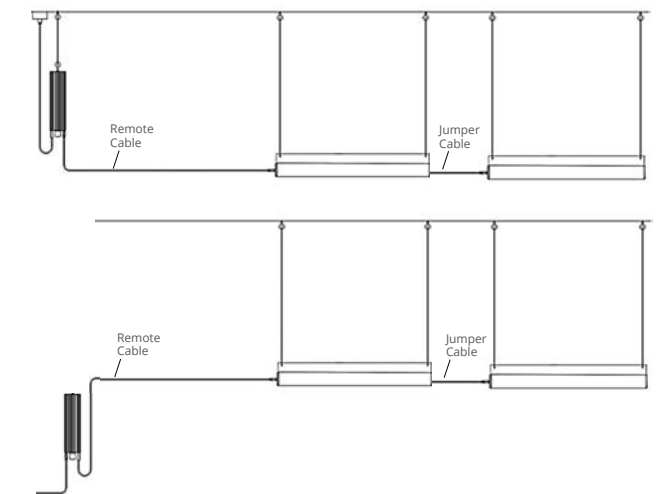
Furthermore, if you need to alter fixture placement due to changes to your plant floor layout, this can be accomplished quickly and easily without re-gridding hassles. Simply change out the remote cable cord for one of suitable length to reach the new location of the fixture.



SAVE MONEY + SPACE WITH CUSTOM DAISY CHAIN CONFIGURATIONS

Our custom daisy chain configurations allow you to power multiple fixtures with one driver, saving you money and space. And we can custom-mount your drivers at a height that best suits your environment.

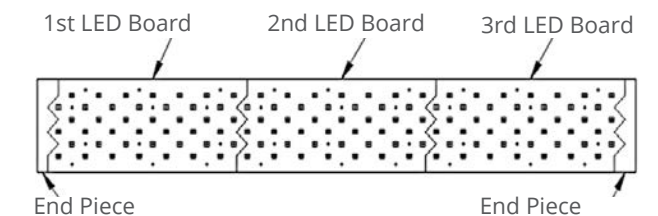
Reach out to a manufacturing representative today for a custom quote for your facility.



TACTIK ENGINEERED LED BOARDS PROVIDE UNIFORM LED LIGHTING EFFICIENTLY CONFIGURED TO YOUR NEEDS

Patent-pending shark tooth design enables LED boards to be configured for any of 11 models, ranging from 100-900 Watts.

The resulting array provides uniform light distribution with no dead spots.



Motion Sensor Ordering Information

Wattstopper Low Voltage High/Low/Off PIR Fixture Integrated Outdoor Photo/Motion Sensor (Standard Ordering Selection)



DESCRIPTION

> The standard Wattstopper Motion Sensor mounts in an outdoor lighting fixture and provides multi-level control based on motion and/or daylight contribution. It controls 0-10 VDC dim-to-off LED drivers or ballasts, or works with a power pack to control other loads. When used with an FSP-Lx Lens, the sensor is rated for wet and cold locations. All control parameters are adjustable via a wireless configuration tool capable of storing and transmitting sensor profiles.

FEATURES

- > Controls 0-10V dim-to-off LED drivers or ballasts, or works with a power pack to control other loads
- > IP66 rated with choice of lenses for wet and outdoor locations, and mounting heights from 8’ to 40’
- > Configuration tool stores six sensor profiles for quick setup and adjustment of multiple sensors
- > Polycarbonate construction; flame retardant, UV resistant, impact resistant, recyclable

Enlighted Ruggedized IoT Motion Sensor (Premium Ordering Selection)

DESCRIPTION

> The Ruggedized Sensor, 8-pin, is a complete sensing and lighting control node powered from its attached light fixture. Sensor information combined with a configurable behavior profile make the sensor an integral component of an intelligent lighting control and sensing solution. With integrated wireless communications for data transmission and remote configuration along with autonomous fixture-level control, this sensor brings advanced lighting automation to a whole new level.



FEATURES

- > Enlighted Sensor Interface (ESI): IoT Ready™ LED drivers and Enlighted Control Units communicate with the sensor via a serial interfaces providing access to energy consumption, and digital lighting control.
- > Localized Lighting Control: Light-level schedules, preferences, and behavior profiles for each fixture are wirelessly communicated during system setup and locally stored to ensure continuous operation.
- > Edge Sensing: Local processing capability supports advanced sensing and detection algorithms, providing optimization of existing features and enabling future applications.
- > Bluetooth Low Energy: An embedded BLE radio allows the sensor to receive, transmit beacons and support communication with lighting control devices and other sensors.
- > Occupancy and Thermal Sensing: A digital Passive Infrared (PIR) sensor, combined with separate ambient and temperature sensing, supports precise motion identification while minimizing false detection events.
- > Room and Zone Control: Pairs with room control switches for code-compliant manual-on or auto-off capability. Sensors can be grouped into zones that share occupancy sensing data and coordinate light control based on detected motion.
- > Two lens options are offered to cover standard (<18 ft.) and high-bay (up to 50 ft.) ceilings.

*All Motion sensor purchases come as a set, including a motion sensor and an L7 Wattstopper lens. Coverage includes up to 40’ and the maximum temperature rating for the motion sensors is 165°F

Power Cord Ordering Information

FEATURES

- > Choose a whip, straight blade or twist lock cord
- > Hardwire or Plug and Play connection to the fixture
- > Lengths- 6ft or 12 ft; contact us for a custom length

POWER CORD OPTIONS

SERIES	FIXTURE DISCONNECT	VOLTAGE	PLUG AMP RATING	PLUG ATTACHMENT TYPE	LENGTH
PC - Power Cord	HW - Factory Installed Hardwire Cord PP - Plug N Play Connector	125 - 120V	15 - 15 Amps	SB - Straight Blade TL - Twist Lock	6 - 6 Feet
		250 - 250V	20 - 20 Amps		12 - 12 Feet
		277 - 277V			
		480 - 480V			
		600 - 600V			
PC					

POWER CORD WHIP OPTIONS

SERIES	FIXTURE DISCONNECT	VOLTAGE	WHIP	LENGTH
PC - Power Cord	HW - Factory Installed Hardwire Cord PP - Plug N Play Connector	300 - 300V	W - Whip	6 - 6 Feet
		600 - 600V		12 - 12 Feet
PC			W	



> twist lock, straight blade, and whip cords, a driver, and a remote cable



> 1/8 inch
Fixture Safety
Cables/
Hanging
Cables

Proud to Be the First to Offer

American-Made Industrial LEDs



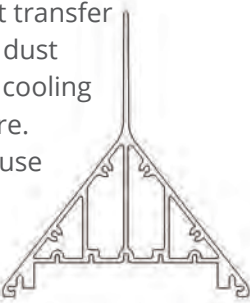
**INTRODUCING LED LIGHTING
MADE IN AMERICA'S HEARTLAND**

Our latest generation of Military-Grade LED lighting includes fixtures made right here in America. Now, you can get American made quality and craftsmanship that you can see and feel. What you won't see is import tariffs tacked onto your fixture price tag.

As a veteran owned business, we understand the importance of offering our customers lasting American values.

**PATENT-PENDING DESIGNS
REDEFINE HEAT DISSIPATION**

Our NCO and Citadel Series feature an innovative, vertical exterior heat transfer cooling fin to dissipate heat while preventing dust and debris build-up. In addition, internal heat transfer cooling fins are protected against dust and debris build-up for improved cooling efficiency over the life of the fixture. These designs look different because they are different.



**HIGHER HEAT RATINGS
MEAN LONGER LIFE**

Our high-heat rated units now feature up to a 30% increase in heat threshold compared to our leading competitors. What's more, unlike our competitors that experience up to a 45% fall-off in lumen output as they reach their high-heat rating, our fixtures have no such fall-off.

245° F

195° F

125° F

2 WEEK LEAD TIMES

Leading-edge, modular design and advanced manufacturing capabilities allow us to ship orders, even custom orders- in less time.

And all our products are backed by industry-leading warranties for added peace of mind.



Put it all together and you start to see the real value of lighting made in America specifically for American business.

Contact Information - Order Direct

TO ORDER DIRECT:

By phone: 920-287-3840
By e-mail: sales@tactik.com

OPERATING HOURS:

8am-4pm central time, Monday through Friday.

SHIPPING:

Product is shipped from our facilities in Wisconsin. Purchases of \$4,000 or more are shipped free of charge. All other orders are subject to standard shipping fees.

PAYMENT TERMS:

Net 15 days.

RETURNS:

Any product purchased from Tactik Lighting can be returned in the original packaging, unused and in salable condition for a 15% restocking fee. Returns need to be initiated with Tactik Lighting customer service within 45 days of product delivery. Customer is responsible for return shipping costs. Credit will be issued after product has been received and inspected by Tactik Lighting.

More Ways To Order

MANUFACTURING REPS:

ROZYCKI LIGHTING
314.997.6200

Desert States
Electrical Sales
602.268.7008

CORE
TECHNOLOGIES
952.314.2144

LUMINATION
502.491.8811

ARTI LIGHT GROUP
787.310.8000

VERTICAL
LIGHTING & CONTROLS
847.844.0454

DISTRIBUTORS:

Gexpro
Supplier#: 1052098

GraybaR
Supplier#: 100077509

sonepar
Powered by Difference
Supplier#: 35069

Rexel
Supplier#: 1052098

WESCO
Supplier#: 75873

BSE BORDER STATES
Supply Chain Solutions™
Supplier#: 56876

VIKING electric
Supplier#: 21953

CRESCENT
ELECTRIC
SUPPLY COMPANY
Supplier#: 373437

CES
CITY ELECTRIC SUPPLY

FOR MORE INFORMATION:

Visit our website tactiklighting.com/wheretobuy

Citadel Series LED



*All Motion sensor purchases come as a set, including a motion sensor and an L7 Wattstopper lens. Coverage includes up to 40' and the maximum temperature rating for the motion sensors is 165°F

FEATURES

- > Driver temperature up to 149°F (65°C)
- > Inventronics Drivers with less than 1% failure rate
- > Patent-pending remote driver minimizes fixture operating temperature without re-gridding required
- > Patent-pending design extends fixture life by helping prevent build-up of insulating dust and debris and eliminating illumination dead spots
- > Includes 10 Year Module Warranty - Full light engine or plug & play driver module replacement, rather than parts
- > Fail off 15KA transient voltage surge suppressor (TVSS) protects fixture against failure due to power supply surges
- > Optional motion sensor. Choose from standard by Wattstopper with L7 lens (fig 1.1 & fig 1.2*), or Internet of Things (IOT) by Enlighted Sensors (fig 1.3).
- > Dimmable 0-10V
- > UL 1598 listed
- > IP65 rated

LUMINOUS OUTPUT & DIMENSIONS

WATTAGE	STANDARD TEMP		HIGH TEMP		EXTREME TEMP	
	OUTPUT	LENGTH	OUTPUT	LENGTH	OUTPUT	LENGTH
100 Watts	13,220 lumens	18 in	13,220 lumens	18 in	13,220 lumens	18 in
150 Watts	21,600 lumens	18 in	21,600 lumens	26 in	21,600 lumens	26 in
200 Watts	28,800 lumens	26 in	28,800 lumens	34 in	28,800 lumens	34 in
250 Watts	36,000 lumens	34 in	36,000 lumens	42 in	36,000 lumens	42 in
300 Watts	43,200 lumens	34 in	43,200 lumens	50 in	43,200 lumens	50 in
400 Watts	57,600 lumens	50 in	57,600 lumens	66 in	57,600 lumens	66 in
500 Watts	72,000 lumens	50 in	72,000 lumens	82 in	72,000 lumens	82 in
600 Watts	86,400 lumens	66 in	86,400 lumens	98 in	86,400 lumens	98 in
700 Watts	100,800 lumens	82 in	100,800 lumens	114 in	100,800 lumens	114 in
800 Watts	115,200 lumens	90 in	115,200 lumens	130 in	115,200 lumens	130 in
900 Watts	129,600 lumens	98 in	126,000 lumens	146 in	126,000 lumens	146 in

OPERATIONAL TEMPERATURE

STANDARD TEMP	HIGH TEMP	EXTREME TEMP
-40°F to 130°F (or -40°C to 55°C)	-40°F to 195°F (or -40°C to 90°C)	-40°F to 245°F (or -40°C to 118°C)

CITADEL ORDERING INFORMATION

ORDER NUMBER: CIT-1-100-30-1-2-1-1-1-X-X-1-1-1

SERIES	WATTAGE	KELVIN	OPTICS	LENS	FINISH	DRIVER VOLTAGE	REMOTE CABLE	MOTION SENSOR	BATTERY BACKUP	DLC	POWER CORD TYPE	CORD LENGTH
CIT-1 Std Temp	100	30- (3000K)	1- No Optics	2- Flat Poly Clear ¹	1- Black	1- 120/277V	1- 6'	X- No	X- No	1- Standard	1- whip 120-277V	1- 6'
CIT-2 High Temp	150	40- (4000K)	2- 60°	6- Tempered glass clear		4- 347/480V	2- 10'	1- Standard ²	1- Yes	2- Premium	2- whip 347-480V	2- 12'
CIT-3 Extreme	200	50- (5000K)	4- Aisle				3- 25'	2- IOT ²			3- 125V 15amp Straight	
	250						4- 50'				4- 125V 20amp Twistlock	
	300						5- 100'				5- 250V 20amp Twistlock	
	400						6- 200'				6- 277V 15amp Twistlock	
	500						7- 500'				7- 277V 20amp Twistlock	
	600						8- 1,000'				8- 480V 20amp Twistlock	
	700						9- Custom				9- 600V 20amp Twistlock	
	800											
	900											

¹ Due to melting concerns, Flat Poly Clear Lenses are only available with CIT-1 Standard Temperature Fixtures

² Motion Sensor information: Standard (1) features sensors by Wattstopper with L7 lens. Internet of Things or IOT, (2) features sensors by Enlighted Sensors

NCO Series LED



LUMINOUS OUTPUT & DIMENSIONS

	STANDARD TEMP		HIGH TEMP		EXTREME TEMP	
WATTAGE	OUTPUT	LENGTH	OUTPUT	LENGTH	OUTPUT	LENGTH
100 Watts	12,960 lumens	18 in	12,960 lumens	18 in	12,960 lumens	18 in
150 Watts	21,600 lumens	18 in	21,600 lumens	26 in	21,600 lumens	26 in
200 Watts	28,800 lumens	26 in	28,800 lumens	34 in	28,800 lumens	34 in
250 Watts	36,000 lumens	34 in	36,000 lumens	42 in	36,000 lumens	42 in
300 Watts	43,200 lumens	34 in	43,200 lumens	50 in	43,200 lumens	50 in
400 Watts	57,600 lumens	50 in	57,600 lumens	66 in	57,600 lumens	66 in
500 Watts	72,000 lumens	50 in	72,000 lumens	82 in	72,000 lumens	82 in
600 Watts	86,400 lumens	66 in	86,400 lumens	98 in	86,400 lumens	98 in
700 Watts	100,800 lumens	82 in	100,800 lumens	114 in	100,800 lumens	114 in
800 Watts	115,200 lumens	90 in	115,200 lumens	130 in	115,200 lumens	130 in
900 Watts	129,600 lumens	98 in	123,300 lumens	146 in	123,300 lumens	146 in

OPERATIONAL TEMPERATURE

STANDARD TEMP	HIGH TEMP	EXTREME TEMP
-40°F to 130°F (or -40°C to 55°C)	-40°F to 195°F (-40°C to 90°C)	-40°F to 245°F (-40°C to 118°C)

NCO ORDERING INFORMATION

SERIES	WATTAGE	KELVIN	OPTICS	LENS	FINISH	DRIVER VOLTAGE	REMOTE CABLE	MOTION SENSOR	BATTERY BACKUP	DLC	POWER CORD TYPE	CORD LENGTH
NCO-1 Std Temp	100	30- (3000K)	1- No Optics	2- Flat Poly Clear ¹	1- Black	1- 120/277V	1- 6'	X- No	X- No	1- Standard	1- whip 120-277V	1- 6'
NCO-2 High Temp	150	40- (4000K)	2- 60°	6- Tempered glass clear		4- 347/480V	2- 10'	1- Standard ²	1- Yes	2- Premium	2- whip 347-480V	2- 12'
NCO-3 Extreme	200	50- (5000K)	4- Aisle				3- 25'	2- IOT ²			3- 125V 15amp Straight	
	250						4- 50'				4- 125V 20amp Twistlock	
	300						5- 100'				5- 250V 20amp Twistlock	
	400						6- 200'				6- 277V 15amp Twistlock	
	500						7- 500'				7- 277V 20amp Twistlock	
	600						8- 1,000'				8- 480V 20amp Twistlock	
	700						9- Custom				9- 600V 20amp Twistlock	
	800											
	900											

¹ Due to melting concerns, Flat Poly Clear Lenses are only available with NCO-1 Standard Temperature Fixtures
² Motion Sensor information: Standard (1) features sensors by Wattstopper with L7 lens. Internet of Things or IOT, (2) features sensors by Enlighted Sensors

FEATURES

- > Driver temperature up to 149°F (65°C)
- > Inventronics Drivers with less than 1% failure rate
- > Patent-pending remote driver minimizes fixture operating temperature without re-gridding required
- > Patent-pending design extends fixture life by helping prevent build-up of insulating dust and debris and eliminating illumination dead spots
- > Includes 10 Year Module Warranty - Full light engine or plug & play driver module replacement, rather than parts
- > Fail off 15KA transient voltage surge suppressor (TVSS) protects fixture against failure due to power supply surges
- > Optional motion sensor. Choose from standard by Wattstopper with L7 lens (fig 1.1 & 1.2*), or Internet of Things (IOT) by Enlighted Sensors (fig 1.3).
- > Dimmable 0-10V
- > UL 1598 listed
- > IP65 rated

SPECIFICATIONS

Power Factor.....>0.9
Available Wattages..... 100, 150, 200, 250, 300, 400, 500, 600, 700, 800, 900
Kelvin Temperatures 3000K, 4000K, 5000K
Input Voltage 120/277V & 347/480V
Performance.....Up to 151 lm/W
Distribution..... 120°, 60° & Aisle
Mount Type.....Suspension
Color Rendering Index (3000K)>70
Color Rendering Index (4000K)>70
Color Rendering Index (5000K)>90

Turret Series LED



OPERATIONAL TEMPERATURE

STANDARD TEMP	HIGH TEMP
-40°F to 125°F (or -40°C to 52°C)	-40°F to 185°F (or -40°C to 80°C)

LUMINOUS OUTPUT & DIMENSIONS

	STANDARD TEMP		HIGH TEMP	
WATTAGE	OUTPUT	DIMENSIONS	OUTPUT	DIMENSIONS
100 Watts	14,400 lumens	11" Diameter x 1.9" Height	13,940 lumens	11" Diameter x 1.9" Height
150 Watts	22,180 lumens	11" Diameter x 1.9" Height	22,180 lumens	16" Diameter x 2.2" Height
200 Watts	32,730 lumens	16" Diameter x 2.2" Height	32,730 lumens	16" Diameter x 2.2" Height
250 Watts	39,910 lumens	16" Diameter x 2.2" Height	39,910 lumens	18" Diameter x 3.5" Height
300 Watts	49,550 lumens	18" Diameter x 3.5" Height	49,550 lumens	18" Diameter x 3.5" Height
350 Watts	57,973 lumens	18" Diameter x 3.5" Height	N/A	N/A
400 Watts	66,050 lumens	18" Diameter x 3.5" Height	N/A	N/A

TURRET ORDERING INFORMATION

SERIES	WATTAGE	KELVIN	OPTICS	LENS	FINISH	DRIVER VOLTAGE	REMOTE CABLE	MOTION SENSOR	BATTERY BACKUP	DLC
TUR-1 Std Temp	100	40- (4000K)	1- No	2- Flat Poly Clear ²	1- Black	1- 120/277V	X- Integrated Driver	X- No	X- No	1- Standard
TUR-2 High Temp	150	50- (5000K)		6- Tempered Glass Clear		4- 347/480V	1- 6'	1- Standard ³	1- Yes	2- Premium
	200						2- 10'	2- IOT ³		
	250						3- 25'			
	300						4- 50'			
	350 ¹						5- 100'			
	400 ¹						6- 200'			
							7- 500'			
							8- 1,000'			
							9- Custom			

¹ 350 Watt & 400 Watt fixtures are only available in Standard Temperature
² Due to melting concerns, Flat Poly Clear Lenses are only available with TUR-1 Standard Temperature Fixtures
³ Motion Sensor information: Standard (1) features sensors by Wattstopper with L7 lens. Internet of Things or IOT, (2) features sensors by Enlighted Sensors

FEATURES

- > Driver temperature up to 149°F (65°C)
- > Inventronics Drivers with less than 1% failure rate
- > Patent-pending remote driver minimizes fixture operating temperature and allows fixture to evolve with changing plant floor demands with no re-gridding required
- > Includes 10 Year Module Warranty - Full light engine or plug & play driver module replacement, rather than parts
- > Fail off 15KA transient voltage surge suppressor (TVSS) protects fixture against failure due to power supply surges
- > Optional motion sensor. Choose from standard by Wattstopper with L7 lens (fig 1.1 & fig 1.2*), or Internet of Things (IOT) by Enlighted Sensors (fig 1.3).
- > Dimmable 0-10V
- > UL 1598 listed
- > IP65 rated

SPECIFICATIONS

Power Factor.....>0.9
Available Wattages.....100, 150, 200, 250, 300, 350, 400
Kelvin Temperatures 4000K, 5000K
Input Voltage 120/277V & 347/480V
Performance.....Up to 163 lm/W
Distribution..... 120°
Mount Type.....Suspension
Color Rendering Index (4000K)>70
Color Rendering Index (5000K)>90



Stainless Steel Garrison Series LED



FEATURES

- > Stainless housing for optimal heat dissipation
- > Suspend or surface mount the fixture
- > Includes 5 Year parts warranty
- > In-series transient voltage surge suppressor (TVSS) protects fixture against failure due to dirty power and power supply surges
- > Featuring American made Thomas Research driver
- > Optional motion sensor. Choose from standard by Wattstopper with L7 lens (fig 1.1 & 1.2*), or Internet of Things (IOT) by Enlighted Sensors (fig 1.3).
- > UL 1598 listed
- > Rated IP65

LUMINOUS OUTPUT

WATTAGE	OUTPUT
50 Watts	7,200 lumens
75 Watts	10,800 lumens
100 Watts	14,400 lumens
125 Watts	18,000 lumens

SPECIFICATIONS

Input Voltage120/277V
Performance.....Up to 144 lm/W
Operational Temperature..... -40°F to 145°F (-40°C to 63°C)
Distribution..... 120°
Mount Type.....Suspended or Surface Mounted
Available Wattages.....50, 75, 100, 125
Kelvin Temperature 4000K, 5000K
Dimensions..... L51.8" x W7.5" x H4.4"
Color Rendering Index>70



GARRISON ORDERING INFORMATION

SAMPLE ORDER NUMBER: GAR-7-X50-40-1-3-2-1-1-X-X-1




SERIES	WATTAGE	KELVIN	OPTICS	LENS	FINISH	DRIVER VOLTAGE	REMOTE CABLE	MOTION SENSOR	BATTERY BACKUP	CORD
GAR-7	X50	40- (4000K)	1- No Optics	3- Drop Poly Frosted	2- Stainless	1- 120-277V	1- N/A	X- No	X- No	1- 125V, 15amp, SB, 6ft
	X75	50- (5000K)		6- Flat tempered glass				1- Standard ¹	1- Yes	3- 125V, 15amp, TL, 6ft
	100							2- IOT ¹		9- 277V, 15amp, TL, 6ft
	125									D- 300V, Whip, 6ft

¹ Motion Sensor part information: Standard (1) features sensors by Wattstopper with L7 Lens. Internet of Things (2) features sensors by Enlighted Sensors
** Fixture Includes a 6 foot Hardwired Cord- see Power Cord ordering information on page 12 for additional options.

Sample Product Comparison- Standard Temperature

					
	Tactik Lighting Turret	Tactik Lighting Citadel	Tactik Lighting NCO	KBL Series	Lithonia
In-series Transient Voltage Surge Suppressor (TVSS) to protect from dirty power including spikes, transients and lightning	✓	✓	✓	✗	✗
Programmable driver allows for precise light output	✓	✓	✓	✗	✗
Standardized Driver - eliminates multiple SKUs - same driver, multiple fixtures - NCO, Citadel, Turret	✓	✓	✓	✗	✗
Fast 1 week lead times	✓	✓	✓	✗	✗
IOT integrates lighting into other building systems	✓	✓	✓	✗	✗
Operational Temperature	up to 125°F (52°C)	up to 130°F (55°C)	up to 130°F (55°C)	up to 122°F (50°C)	up to 113°F (45°C)
Warranty	10 year warranty	10 year warranty	10 year warranty	5 year warranty	5 year warranty
Performance	163 lumens/watt	160 lumens/watt	151 lumens/watt	153 lumens/watt	136 lumens/watt
Driver	Remote or Integrated	Remote or Integrated	Remote or Integrated	Integrated Only	Integrated Only
Kelvin Temps Available	4000K, 5000K	3000K, 4000K, 5000K	3000K, 4000K, 5000K	3000K, 4000K, 5000K	4000K, 5000K
Distribution	120° Only	60°, 120°, Aisle	60°, 120°, Aisle	120° Reflectors	120° Only
Lenses	Flat Poly Clear & Flat Tempered Glass	Flat Poly Clear & Flat Tempered Glass	Flat Poly Clear & Flat Tempered Glass	Tempered Glass	No Lens or Acrylic
Light Output (Lumens) - Higher is better	14,400 - 66,050	13,220 - 129,600	12,960 - 129,600	9,000 - 30,000	12,000 - 30,000
CRI - Higher is better	5000K - 90 CRI 4000K - 70 CRI	5000K - 90 CRI 4000K - 70 CRI	5000K - 90 CRI 4000K - 70 CRI	70 or 80 CRI	Minimum 80 CRI
Wattages available	100W - 400W	100W - 900W	100W - 900W	155W or 233W	81W - 215W
IP Rating	IP65	IP65	IP65	IP65	Damp Location Listed
Options	Plug & Play power cord; Motion Sensor; Mounting options; Battery Backup; Remote Driver up to 1,000 feet	Plug & Play power cord; Motion Sensor; Mounting options; Battery Backup; Remote Driver up to 1,000 feet	Plug & Play power cord; Motion Sensor; Mounting options; Battery Backup; Remote Driver up to 1,000 feet	Mounting Options including J-Box, Pendant, or Hook & Cord	Hardwire Cord; Motion Control Sensor

Sample Product Comparison- High & Extreme Temperature

			
	Tactik Lighting Turret	Tactik Lighting Citadel	Tactik Lighting NCO
In-series Transient Voltage Surge Suppressor (TVSS) to protect from dirty power including spikes, transients and lightning	✓	✓	✓
Thermistor - LED's are protected from premature light depreciation due to overheating	✓	✓	✓
Programmable driver allows for precise light output	✓	✓	✓
Standardized Driver - eliminates multiple SKUs - same driver, multiple fixtures - NCO, Citadel, Turret	✓	✓	✓
Fast 1 week lead times	✓	✓	✓
IOT integrates lighting into other building systems	✓	✓	✓
Made in USA - Sheboygan, WI	✓	✓	✓
50%Operational Temperature	185°F (80°C)	245°F (118°C)	245°F (118°C)
Warranty	10 year warranty	10 year warranty	10 year warranty
Performance	163 lumens/watt	160 lumens/watt	151 lumens/watt
Driver	Remote or Integrated	Remote or Integrated	Remote or Integrated
Kelvin Temps Available	4000K, 5000K	3000K, 4000K, 5000K	3000K, 4000K, 5000K
Distribution	120°	60°, 120°, Aisle	60°, 120°, Aisle
Lenses	Flat Poly Clear & Flat Tempered Glass	Flat Poly Clear & Flat Tempered Glass	Flat Poly Clear & Flat Tempered Glass
Light Output (Lumens) - Higher is better	13,940 - 49,550	13,220 - 126,000	12,960 - 123,300
CRI - Higher is better	4000K - 70 CRI 5000K - 90 CRI	4000K - 70 CRI 5000K - 90 CRI	4000K - 70 CRI 5000K - 90 CRI
Wattages available	100W - 300W	100W - 900W	100W - 900W
IP Rating	IP65	IP65	IP65
Options	Plug & Play power cord; Motion Sensor; Mounting options; Battery Backup; Remote Driver up to 1,000 feet	Plug & Play power cord; Motion Sensor; Mounting options; Battery Backup; Remote Driver up to 1,000 feet	Plug & Play power cord; Motion Sensor; Mounting options; Battery Backup; Remote Driver up to 1,000 feet
Dimmable 0-10V	✓	✓	✓

			
Dialight Vigilant LED	Holophane Phuzion LED	MaxLite	Hubbel HBLHA SeriesI
✗	✗	✗	✗
✗	✗	✗	✗
✗	✗	✗	✗
✗	✗	✗	✗
✗	✗	✗	✗
✗	✗	✗	✗
✗	✗	✗	✗
149°F (65°C)	175°F (70°C)	140°F (60°C) <16hrs.	149°F (65°C) @ 50% Light Output
10 year warranty	5 year warranty	5 year warranty	5 year warranty
145 lumens/watt	119 lumens/watt	130 lumens/watt	100 lumens/watt
Integrated Only	Remote or Integrated	Integrated Only	Integrated Only
2700K, 4000K, 5000K	3000K, 3500K, 4000K, 5000K	4000K, 5000K	4000K, 5000K
Oval, Medium, Narrow, Wide	Narrow, Medium, Wide, or Focus	120°	Aisle, Narrow, Wide
Glass	Frosted or Acrylic	Clear	Polycarbonate
10,250 - 26,250	12,000 - 60,000	31,200	10,213 - 16,808
Minimum 80 CRI	70, 80, 90 CRI	80 CRI	68 CRI
80W, 102W, 129W, 186W	81W, 130W, 170W, 218W, 254W, 288W, 323W, 374W, 437W	240W	112W, 139W, 169W
IP66	IP64	IP66	IP65
Occupancy Sensor; Mounting Options	Dimming Sensors; Mounting Options; Wire guard; Battery Backup	Hardwire	Hardwire
✗	✗	✓	✗



BACKED WITH CONFIDENCE. INSTALLED BY YOU.



PRODUCTS MADE IN AMERICA

- > First industrial lighting manufacturer to offer American-made products
- > Shortens lead times
- > Get American quality not foreign tariffs



REFURBISHMENT PROGRAM

- > Lowest life cycle cost
- > Low LED & driver running temperatures
- > Rugged military-grade design
- > Quality materials, components and construction

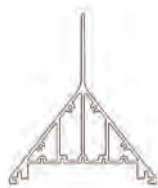
245° F

195° F

125° F

HIGHER HEAT RATINGS

- > Fixtures rated up to 125°F, 195°F, and 245°F
- > Up to a 30% increase compared to leading competitors
- > Unlike competitors, there's no fall-off in lumen output as heat limit is approached



PATENT PENDING DESIGNS

- > Sets new standards for cooling efficiency over the life of the fixture
- > Innovative, vertical exterior cooling fin dissipates heat while preventing dust and debris build-up
- > Internal cooling fins provide additional protection against dust and debris

WattStopper
legrand

enlighted
A Siemens Company

THE TACTIK ADVANTAGE

At Tactik Lighting,
we do things differently.

Our team has decades
of experience helping
hundreds of clients.

We've seen what doesn't work
and we refuse to do it that way.

Our standards are set high
only to deliver the very best
products to our clients.



3115 N 21st Street,
Suite 2, Sheboygan, WI 53083
920-287-3840
sales@tactik.com

tactiklighting.com

