

NCO Series LED

Extreme Reliability for General Environments

Easy installation

Plug and play
waterproof cord
connectors

USA ingenuity

Dual purpose cooling and hanging fin

Fast lead times

Scalable design
up to 900 Watts

Better designed projects

Optics 60° - 90° - 120° - Aisles

INNOVATIVE, PATENT-PENDING DESIGN redefines LED reliability for general purpose industrial environments.

When the top brass needs a job done, they rely on non-commissioned officers (NCOs). Our NCO Series delivers that same no-nonsense work ethic when it comes to military-grade LED lighting. No complaints. No Surprises. No excuses. Just a commitment to exceeding expectations. That's why the NCO is destined to be the backbone of mission-critical objectives across the country.



American-Made Tough & Reliable

We understand that failure is not an option. Our fixtures are uniquely designed and built Military-Grade tough, so they stand up to almost anything without complaint.



Keep Your cool with Remote Drivers

Tactik features remote drivers to prevent unwanted heat build-up. Helps extend fixture life and offers added flexibility to adjust to plant floor plans - without costly re-gridding.



2 Week Lead Time

Our innovative modular design and advanced manufacturing capabilities allow us to ship all orders, even customizations, in 2 weeks.



NCO Series LED

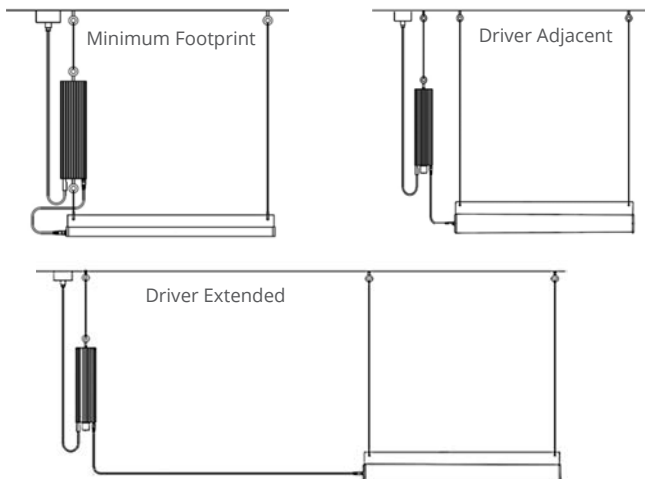
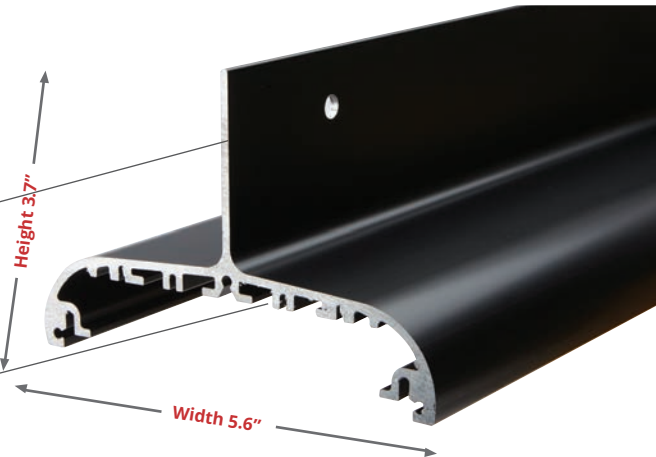
Filled with Bright Ideas for
Improving Lighting Reliability

DISSIPATE HEAT MORE EFFICIENTLY

The NCO Series' unique design helps reduce unwanted heat build-up two different ways.

1. Patent-pending vertical exterior heat transfer cooling fin dissipates heat

2. Internal heat transfer cooling fins prevent buildup of dust and debris that can hinder cooling



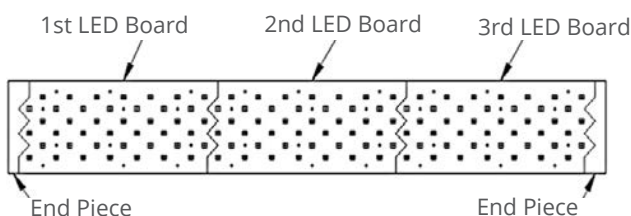
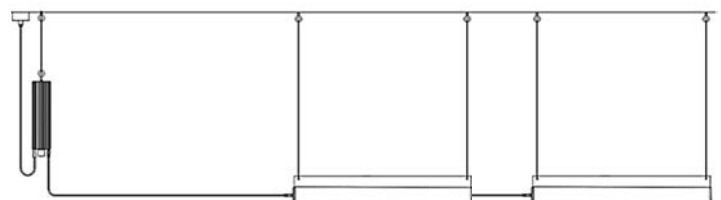
ENHANCE COOLING AND ELIMINATE LED RE-GRIDDING HEADACHES

With leading competitive units, the LED driver is inside the light, which results in a lot of heat. Tactik's products offer remotely mounted drivers, which lowers the temperatures inside the fixtures. This protects the integrity of the driver as well as the LED light itself by allowing the driver to be cooled more effectively.

Should changes in plant floor layout dictate the need to alter fixture placement, this can be accomplished quickly and easily without re-gridding hassles. Simply change out the power cord for one of suitable length to reach the new location of the light.

SAVE MONEY + SPACE WITH CUSTOM DAISY CHAIN CONFIGURATIONS

Our custom daisy chain configurations allows you to power multiple fixtures with one driver, saving you money and space. Reach out to a manufacturing rep today for a custom quote for your facility.



UNIFORM LED LIGHTING EFFICIENTLY CONFIGURED TO YOUR NEEDS

Patent-pending shark tooth design enables LED boards to be configured for any of 11 models, ranging from 100-900 Watts. Resulting array provides uniform light distribution with no dead spots.

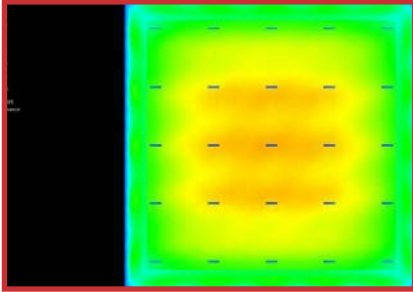
NCO Series LED

Filled with Bright Ideas for
Improving Lighting Reliability

Optics Information

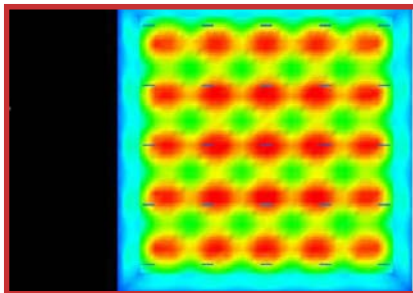
NO OPTICS

- > Great for general illumination. No Optics are also great if you want to maximize horizontal light & to achieve uniform lighting overall. Ideal for 30 feet and below.



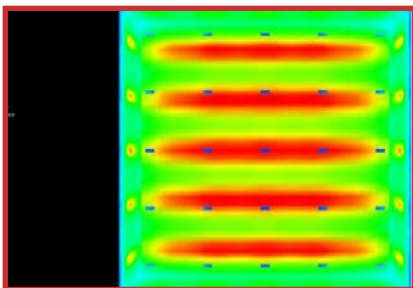
60 DEGREE OPTICS

- > Great for higher ceilings. Best used for fixtures mounted 30+ feet up. (This image captures a 25 foot mounting height).



AISLE OPTICS

- > Great for racking. With Aisle Optics, light is not wasted in adjoining aisles. This means you can reduce the number of fixtures in your facility, or can substantially reduce wattage when switching from HID or Fluorescents to LED.



NCO Series LED



fig 1.1



fig 1.2



fig 1.3

*All Motion sensor purchases come as a set, including a motion sensor and an L7 Wattstopper lens. Coverage includes up to 40' and the maximum temperature rating for the motion sensors is 165°F

FEATURES

- > Driver temperature up to 149°F (65°C)
- > Inventronics Drivers with less than 1% failure rate
- > Patent-pending remote driver minimizes fixture operating temperature without re-gridding required
- > Patent-pending design extends fixture life by helping prevent build-up of insulating dust and debris and eliminating illumination dead spots
- > Includes 10 Year Module Warranty - Full light engine or plug & play driver module replacement, rather than parts
- > Fail off 15KA transient voltage surge suppressor (TVSS) protects fixture against failure due to power supply surges
- > Optional motion sensor. Choose from standard by Wattstopper with L7 lens (fig 1.1 & 1.2*), or Internet of Things (IOT) by Enlighted Sensors (fig 1.3).
- > Dimmable 0-10V
- > UL 1598 listed
- > IP65 rated

LUMINOUS OUTPUT & DIMENSIONS

WATTAGE	STANDARD TEMP		HIGH TEMP		EXTREME TEMP	
	OUTPUT	LENGTH	OUTPUT	LENGTH	OUTPUT	LENGTH
100 Watts	12,960 lumens	18 in	12,960 lumens	18 in	12,960 lumens	18 in
150 Watts	21,600 lumens	18 in	21,600 lumens	26 in	21,600 lumens	26 in
200 Watts	28,800 lumens	26 in	28,800 lumens	34 in	28,800 lumens	34 in
250 Watts	36,000 lumens	34 in	36,000 lumens	42 in	36,000 lumens	42 in
300 Watts	43,200 lumens	34 in	43,200 lumens	50 in	43,200 lumens	50 in
400 Watts	57,600 lumens	50 in	57,600 lumens	66 in	57,600 lumens	66 in
500 Watts	72,000 lumens	50 in	72,000 lumens	82 in	72,000 lumens	82 in
600 Watts	86,400 lumens	66 in	86,400 lumens	98 in	86,400 lumens	98 in
700 Watts	100,800 lumens	82 in	100,800 lumens	114 in	100,800 lumens	114 in
800 Watts	115,200 lumens	90 in	115,200 lumens	130 in	115,200 lumens	130 in
900 Watts	129,600 lumens	98 in	123,300 lumens	146 in	123,300 lumens	146 in

SPECIFICATIONS

Power Factor.....>0.9
 Available Wattages..... 100, 150, 200, 250, 300, 400, 500, 600, 700, 800, 900
 Kelvin Temperatures 3000K, 4000K, 5000K
 Input Voltage 120/277V & 347/480V
 Performance.....Up to 151 lm/W
 Distribution..... 120°, 60° & Aisle
 Mount Type.....Suspension
 Color Rendering Index (3000K)>70
 Color Rendering Index (4000K)>70
 Color Rendering Index (5000K)>90

OPERATIONAL TEMPERATURE

STANDARD TEMP	HIGH TEMP	EXTREME TEMP
-40°F to 130°F (or -40°C to 55°C)	-40°F to 195°F (-40°C to 90°C)	-40°F to 245°F (-40°C to 118°C)

NCO ORDERING INFORMATION

ORDER NUMBER: NCO-1-100-30-1-2-1-1-1-X-X-1-1-1

SERIES	WATTAGE	KELVIN	OPTICS	LENS	FINISH	DRIVER VOLTAGE	REMOTE CABLE	MOTION SENSOR	BATTERY BACKUP	DLC	POWER CORD TYPE	CORD LENGTH
NCO-1 Std Temp	100	30- (3000K)	1- No Optics	2- Flat Poly Clear ¹	1- Black	1- 120/277V	1- 6'	X- No	X- No	1- Standard	1- whip 120-277V	1- 6'
NCO-2 High Temp	150	40- (4000K)	2- 60°	6- Tempered glass clear		4- 347/480V	2- 10'	1- Standard ²	1- Yes	2- Premium	2- whip 347-480V	2- 12'
NCO-3 Extreme	200	50- (5000K)	4- Aisle				3- 25'	2- IOT ²			3- 125V 15amp Straight	
	250						4- 50'				4- 125V 20amp Twistlock	
	300						5- 100'				5- 250V 20amp Twistlock	
	400						6- 200'				6- 277V 15amp Twistlock	
	500						7- 500'				7- 277V 20amp Twistlock	
	600						8- 1,000'				8- 480V 20amp Twistlock	
	700						9- Custom				9- 600V 20amp Twistlock	
	800											
	900											

¹ Due to melting concerns, Flat Poly Clear Lenses are only available with NCO-1 Standard Temperature Fixtures

² Motion Sensor information: Standard (1) features sensors by Wattstopper with L7 lens. Internet of Things or IOT, (2) features sensors by Enlighted Sensors



American Made & Measurably Better

What's better than higher heat ratings in your LED lights? Higher heat ratings in the 1st AMERICAN MADE LED lights!

You heard right. Industrial/commercial LED lights proudly made in America. So, you see a 46% increase in high temperature ratings. You know what you won't see? The cost of foreign trade tariffs jacking up the price of the products you want.



Tactik Labs is your added assurance of reliability.

Our LED lighting is designed to a higher standard. So is our validation process. At our in-house lab testing facility, our products undergo rigorous testing to provide you every assurance possible that all Tactik LED lighting will perform and last as promised. While others may talk about performance and reliability in harsh environments, Tactik Labs documents it.

Backed with confidence.

We protect distributors and customers with a 10-year warranty standard for added peace of mind. Plus, service after the sale includes a proactive warranty process – replacement is shipped immediately if a problem is identified and defective product is returned in its original box.



3115 N 21st Street, Suite 2, Sheboygan, WI 53083
920-287-3840 • sales@tactik.com

tactiklighting.com

