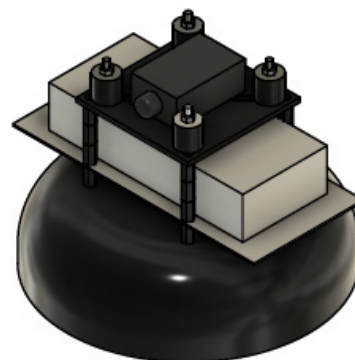
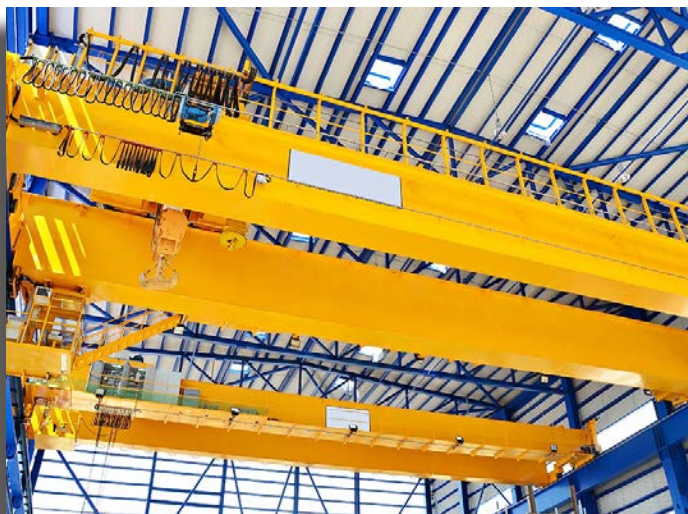


Crane Bay Fixture



LUMINOUS OUTPUT & DIMENSIONS

STANDARD TEMP		
WATTAGE	OUTPUT	DIMENSIONS
100 Watts	14,400 lumens	11" Diameter x 7.9" Height
150 Watts	22,180 lumens	11" Diameter x 7.9" Height
200 Watts	32,730 lumens	16" Diameter x 7.9" Height
250 Watts	39,910 lumens	16" Diameter x 7.9" Height
300 Watts	49,550 lumens	18" Diameter x 7.9" Height
350 Watts	57,973 lumens	18" Diameter x 7.9" Height
400 Watts	66,050 lumens	18" Diameter x 7.9" Height

FEATURES

- > Crane bay mount with vibration dampening
- > Driver temperature up to 149°F (65°C)
- > UL Listed Drivers with less than 1% failure rate
- > Includes 10 Year Warranty
- > Dimmable 0-10V
- > UL 1598 listed
- > IP65 rated

SPECIFICATIONS

Power Factor..... >0.9
 Available Wattages..... 100, 150, 200, 250, 300, 350, 400
 Kelvin Temperatures 4000K, 5000K
 Input Voltage AC & DC Voltage
 Performance.....Up to 163 lm/W
 Color Rendering Index (4000K) >70
 Color Rendering Index (5000K) >90

CRANE ORDERING INFORMATION

SAMPLE ORDER NUMBER: TUR-4-100-40-X-2-1-1-X-X-X-1-1

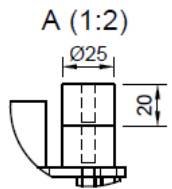
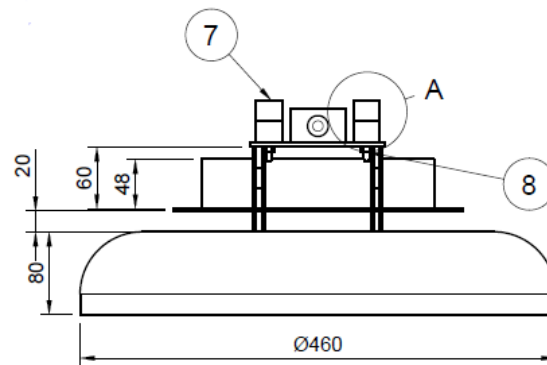
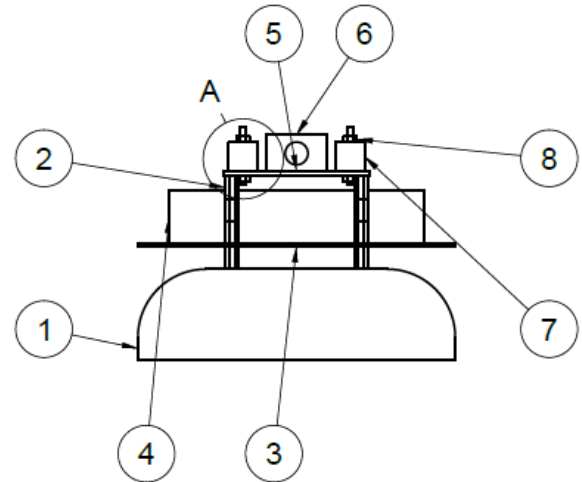
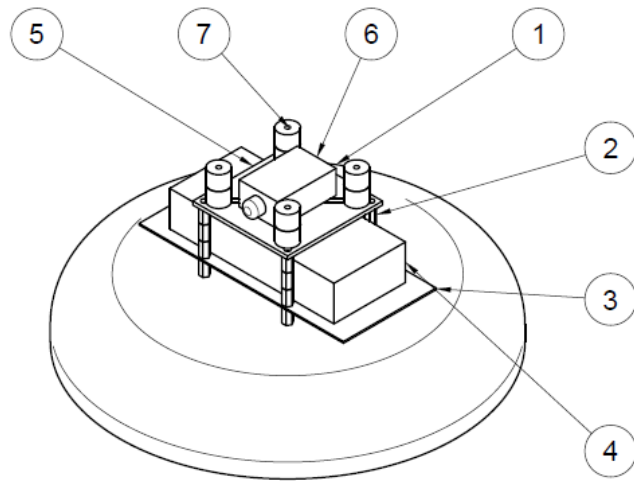
SERIES	WATTAGE	KELVIN	OPTICS	LENS	FINISH	DRIVER VOLTAGE	REMOTE CABLE	MOTION SENSOR	BATTERY BACKUP	DLC	MOUNT
TUR-4 Std Temp	100	40- (4000K)	X- N/A	2- Flat Poly Clear	1- Black	1- 120-277V AC / 127-300V DC	X- Top Mount	X- N/A	X- N/A	1- Standard	1- Crane bay
	150	50- (5000K)		6- Tempered Glass Clear		4- 347-480V AC / 352-500V DC	1- 6'				
	200						2- 10'				
	250						3- 25'				
	300						4- 50'				
	350						5- 100'				
	400						6- 200'				
							7- 500'				
							8- 1,000'				
							9- Custom				

Crane Bay Fixture

How You Round Out the Ultimate
Line of Industrial LED Lighting

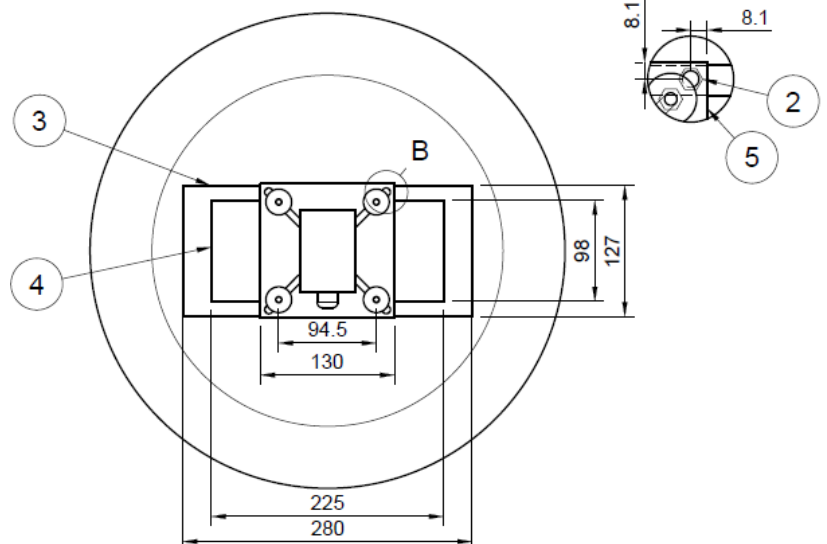
DESCRIPTION

This fixture features rubber isolation anti-vibration mounts that are designed to absorb the transmission of vibration and noise between the mount and the piece of equipment it is mounted to. The mounts (Item 7) are made of natural rubber with inserts and studs bonded inside.



B (1:2)

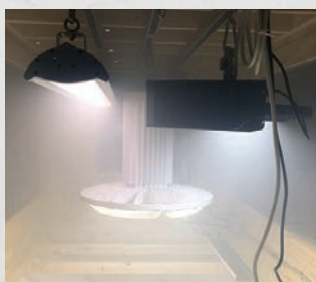
ITEM	QTY	DESCRIPTION
1	1	Fixture
2	1	Spacer
3	1	Thin Plate
4	1	Driver
5	1	Plate
6	1	Junction Box
7	1	Rubber Mounts
8	1	M6 Nut



Scale 1:4, all dimensions in mm



**Veteran owned,
so you can be confident
we have your back**



Tactik Labs is your added assurance of reliability.

Our LED lighting is designed to a higher standard. So is our validation process. At our in-house lab testing facility, our products undergo rigorous testing to provide you every assurance possible that all Tactik LED lighting will perform and last as promised. While others may talk about performance and reliability in harsh environments, Tactik Labs documents it.

Protecting you is second nature to us.

We protect distributors and customers with a 10-year warranty standard for added peace of mind. Plus, service after the sale includes a proactive warranty process – replacement is shipped immediately if a problem is identified and defective product is returned in its original box.



3115 N 21st Street, Suite 2, Sheboygan, WI 53083
920-287-3840 • sales@tactik.com

tactiklighting.com

